

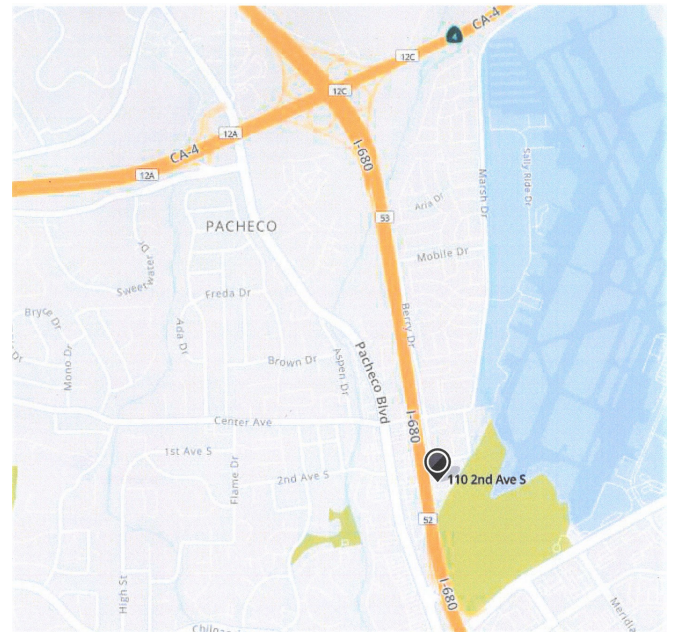
Light Industrial With Yard FOR LEASE

110 Second Avenue South, Units C-2 and C-6
Pacheco, California



Property Information:

- **FREEWAY FRONTAGE UNIT WITH YARD**
- **3,000 +/- SQUARE FEET OF WAREHOUSE**
- **YARD IS FENCED AND PARTIALLY PAVED**
- **18,900 +/- SF OF FENCED YARD AREA**
- **RATE: \$8,950 MO INDUSTRIAL GROSS**
- **TWO RESTROOMS IN THE SPACE**
- **POSSIBLE FREEWAY VISIBLE SIGNAGE**
- **TWO GRADE LEVEL 12' X 12' DOORS**
- **200 AMPS OF 120/208 VOLT 3 PHASE**
- **EXCELLENT ACCESS TO HWY 4 & I 680**



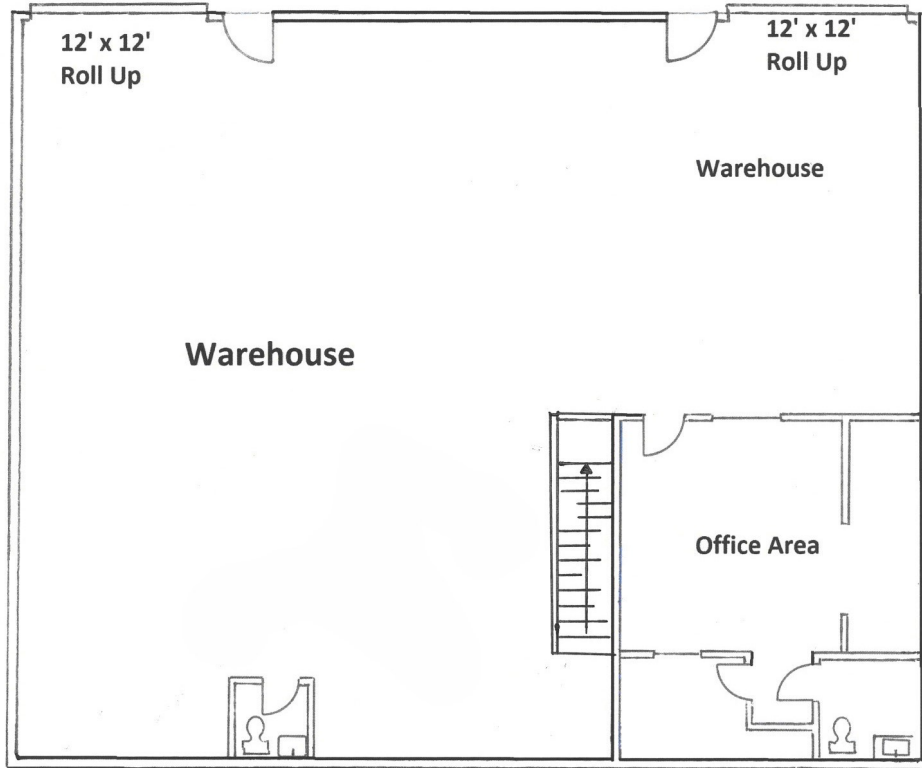
Contact Listing Brokers:

Tom Cranmer
Cranmer Assoc. Inc.
(925) 933-1044
tom@cranmerassociatesinc.com
BRE# 00370734

Graham Deutscher
Deutscher Properties
(925) 768-1389
graham@dpccommercial.com
BRE# 01854629

Deutscher Properties Corp.
370 Civic Drive
Pleasant Hill, CA
Office (925) 676-6166
Fax (925) 676-6177
www.dpccommercial.com

110 Second Avenue South, C-2 & C-6
Pacheco, California – FLOOR PLAN



Contact Listing Brokers:

Tom Cranmer
Cranmer Assoc. Inc.
(925) 933-1044
tom@cranmerassociatesinc.com
BRE# 00370734

Graham Deutscher
Deutscher Properties
(925) 768-1389
graham@dpccommercial.com
BRE# 01854629

Deutscher Properties Corp.
370 Civic Drive
Pleasant Hill, CA
Office (925) 676-6166
Fax (925) 676-6177
www.dpccommercial.com

110 Second Avenue South, C-2 & C-6 Pacheco, California – SITE PLAN



Contact Listing Brokers:

Tom Cranmer
Cranmer Assoc. Inc.
(925) 933-1044
tom@cranmerassociatesinc.com
BRE# 00370734

Graham Deutscher
Deutscher Properties
(925) 768-1389
graham@dpccommercial.com
BRE# 01854629

Deutscher Properties Corp.
370 Civic Drive
Pleasant Hill, CA
Office (925) 676-6166
Fax (925) 676-6177
www.dpccommercial.com

110 Second Avenue South, C-2 & C-6 Pacheco, California – SITE PLAN



Contact Listing Brokers:

Tom Cranmer
Cranmer Assoc. Inc.
(925) 933-1044
tom@cranmerassociatesinc.com
BRE# 00370734

Graham Deutscher
Deutscher Properties
(925) 768-1389
graham@dpccommercial.com
BRE# 01854629

Deutscher Properties Corp.
370 Civic Drive
Pleasant Hill, CA
Office (925) 676-6166
Fax (925) 676-6177
www.dpccommercial.com