

Build-to-Suit

Shops at the Basins: Unit 5, Lot 5

4058 98th Ave S Fargo ND, 58104

MLS #25-68



Conceptual Rendering

ABOUT THE PROPERTY

Shops at the Basins are located in a well-established development on 100th Ave South and Interstate 29. Horace, ND is approximately 5 minutes west of The Shops.

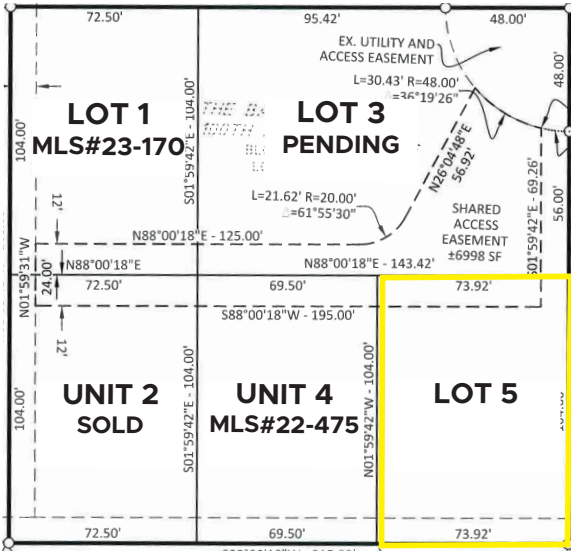
Lot in upscale shop condo development. This lot is shovel-ready! The site has water, sewer, and electrical roughed in reducing engineering and underground costs! The site is brought up to grade and has a Building Permit for a 2,800 SF shop. Most of the parking lot and driveway are installed so a build can happen fast. Shop utilizes three-phase power.

LOT 5 AND 2,800 SF SHOP PURCHASE PRICE: TBD

ZONING: General Commercial/Light Industrial



JESSE RILEY | REALTOR®
701.499.3883
jesse@prgcommercial.com
www.PropertyResourcesGroup.com



JESSE RILEY | REALTOR®
 701.499.3883
 jesse@prgcommercial.com
 www.PropertyResourcesGroup.com

All information contained herein is believed to be true, but should be verified to the buyer's satisfaction in case of error, typographical or otherwise. All information is subject to change without further notice.