

# Commercial Space with Street Front Presence

Open to a Variety of Uses

366 Medford Street  
Somerville, Massachusetts

2,469 SF | Flexible Lease Term



# Commercial Space with Street Front Presence

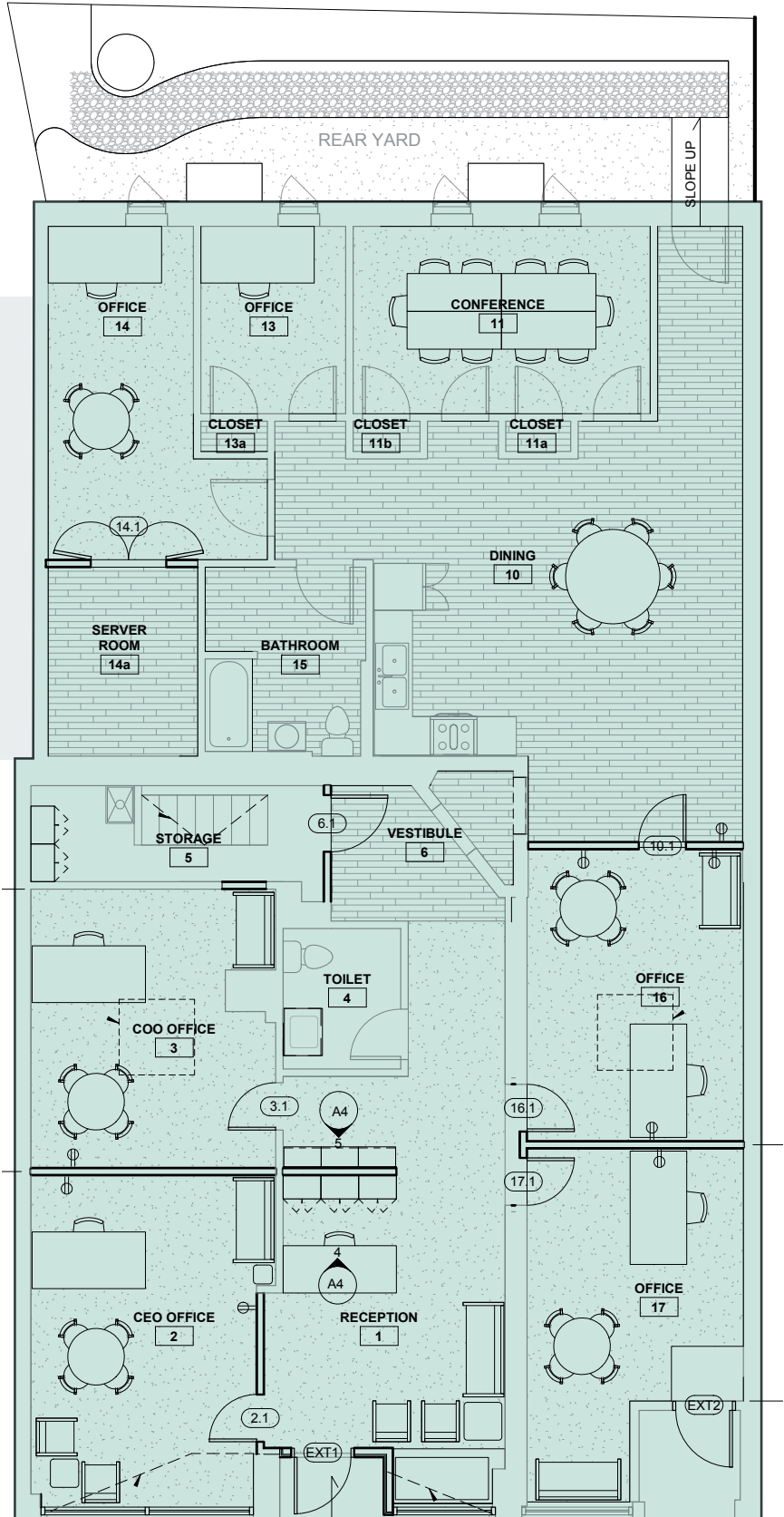
366 Medford Street | Somerville, Massachusetts

# Floor Plan

2,469 SF

## Current Layout:

- Seven (7) Private Offices
- Conference Room
- Open Kitchen
- Reception
- Two (2) Bathrooms
- Shower



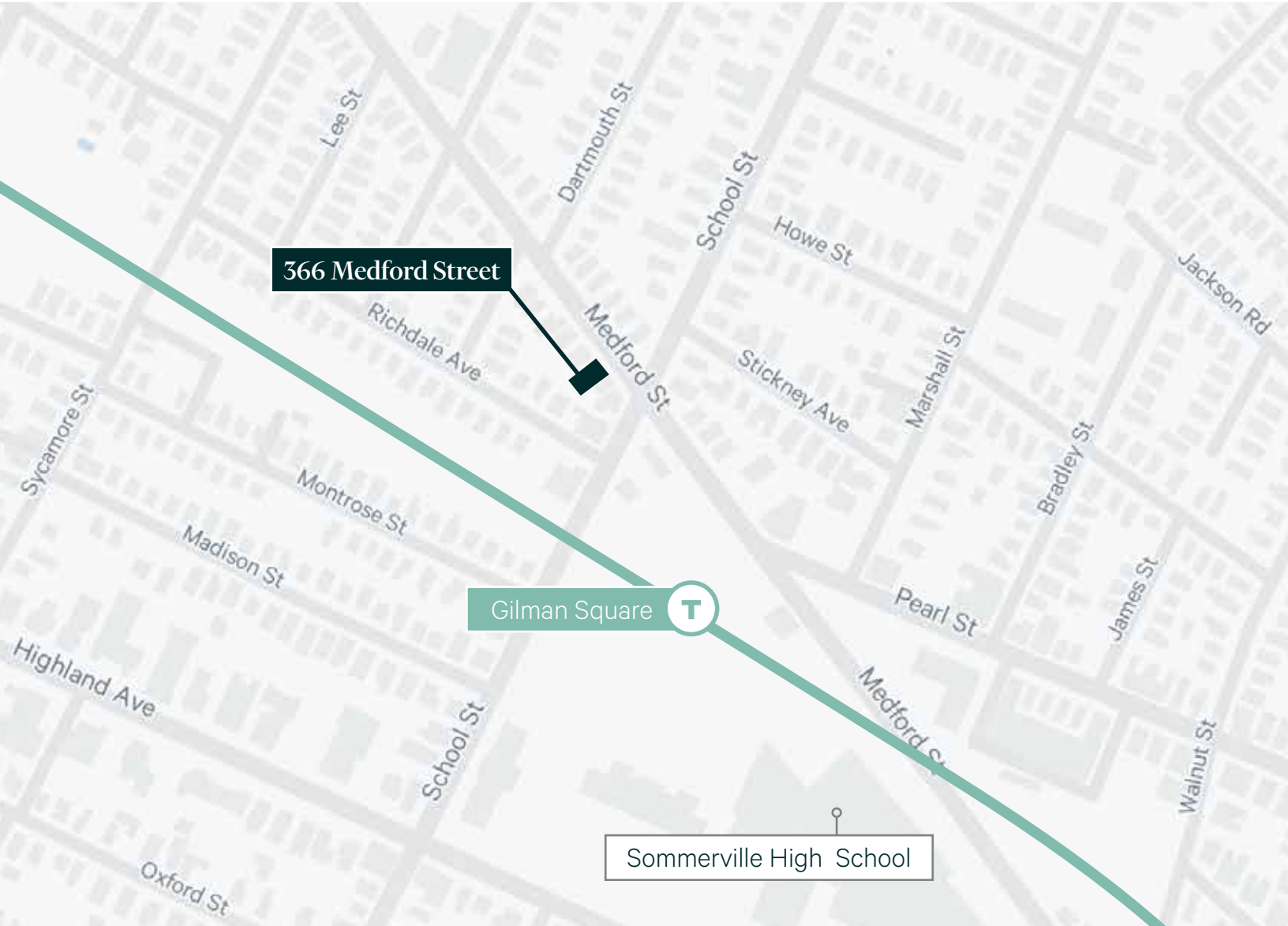
For Lease



# Commercial Space with Street Front Presence

366 Medford Street | Somerville, Massachusetts

# For Lease



## Contact Us

### Dan Metzdorf

Senior Associate

+1 617 599 4498

dan.metzdorf@cbre.com

© 2026 CBRE, Inc. All rights reserved. This information has been obtained from sources believed reliable, but has not been verified for accuracy or completeness. You should conduct a careful, independent investigation of the property and verify all information. Any reliance on this information is solely at your own risk. CBRE and the CBRE logo are service marks of CBRE, Inc. All other marks displayed on this document are the property of their respective owners, and the use of such logos does not imply any affiliation with or endorsement of CBRE. Photos herein are the property of their respective owners. Use of these images without the express written consent of the owner is prohibited.