

1167 McBride Ave



Presented By:
The Diamond Agency

1167 McBride Ave, Woodland Park, NJ 07424



1167 McBride Ave

1167 McBride Ave, Woodland Park, NJ 07424

Property Details

This renovated medical office is in excellent condition and ADA-compliant. It includes all necessary features suitable for medical use and can operate as an immediate or urgent care center. Also suitable for non-medical use

Located on the first level of a well-maintained medical office building, this 2,400-SF space features 12 rooms, including a spacious waiting room, a reception area, and numerous workstations to accommodate a high volume of patients. Additionally, the layout includes 5 examination rooms, a doctor's office, a kitchen, a filing room, and 2 bathrooms.

The office also features a utility room with new HVAC units, two-zone heating, central air conditioning, and LED lighting. There are front and back entrances for convenient access. Located near major highways & public transp.

Price: \$22.50 /SF/YR

- ADA Compliant
- Renovated "Turn-key-Ready"
- LED lights, Front & Back entrance
- Commuter friendly- Near highways and Public Trans.

View the full listing here: <https://www.loopnet.com/Listing/1167-McBride-Ave-Woodland-Park-NJ/40469874/>

Rental Rate:	\$22.50 /SF/YR
Property Type:	Office
Property Subtype:	Medical
Building Class:	C
Rentable Building Area	16,600 SF
:	
Year Built:	1978
Walk Score ®:	60 (Moderately friendly)
Transit Score ®:	30 (Somewhat friendly)
Rental Rate Mo:	\$1.88 /SF/MO

For more listing information visit:

<https://www.loopnet.com/Listing/1167-McBride-Ave-Woodland-Park-NJ/40469874/>

1167 McBride Ave

1167 McBride Ave, Woodland Park, NJ 07424

Listing space

1st Floor Ste 1

Space Available: 2,400 SF
Rental Rate: \$22.50 /SF/YR
Date Available: Now
Service Type: Modified Gross
Space Type: Relet
Space Use: Office
Lease Term: Negotiable

For more listing information visit:

<https://www.loopnet.com/Listing/1167-McBride-Ave-Woodland-Park-NJ/40469874/>

1167 McBride Ave

1167 McBride Ave, Woodland Park, NJ 07424

Major Tenant Information

Tenant	SF Occupied	Lease Expired
McBride Imaging Center	-	
Mcbride Surgical Center	-	
sako	-	September 2029
Vein Treatment Clinic	-	

1167 McBride Ave

1167 McBride Ave, Woodland Park, NJ 07424

Location



1167 McBride Ave

1167 McBride Ave, Woodland Park, NJ 07424

Property Photos



Work station



Waiting area

1167 McBride Ave

1167 McBride Ave, Woodland Park, NJ 07424

Property Photos



Work station



Other

1167 McBride Ave

1167 McBride Ave, Woodland Park, NJ 07424

Property Photos



Interior Photo



Interior Photo

For more listing information visit:

<https://www.loopnet.com/Listing/1167-McBride-Ave-Woodland-Park-NJ/40469874/>

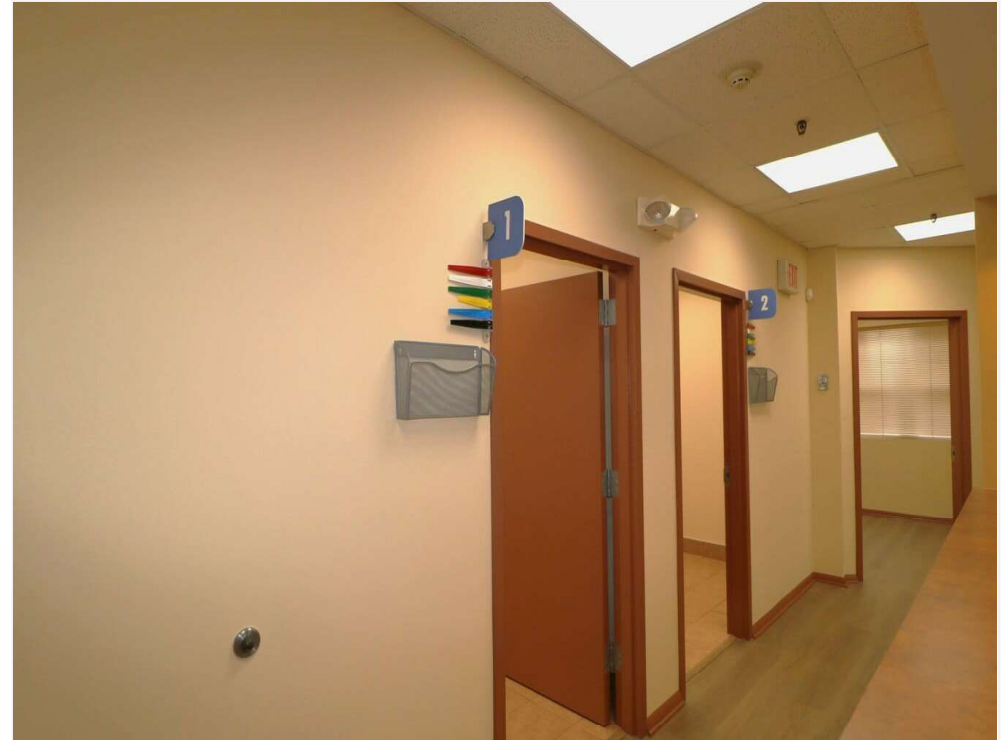
1167 McBride Ave

1167 McBride Ave, Woodland Park, NJ 07424

Property Photos



IMG_8182

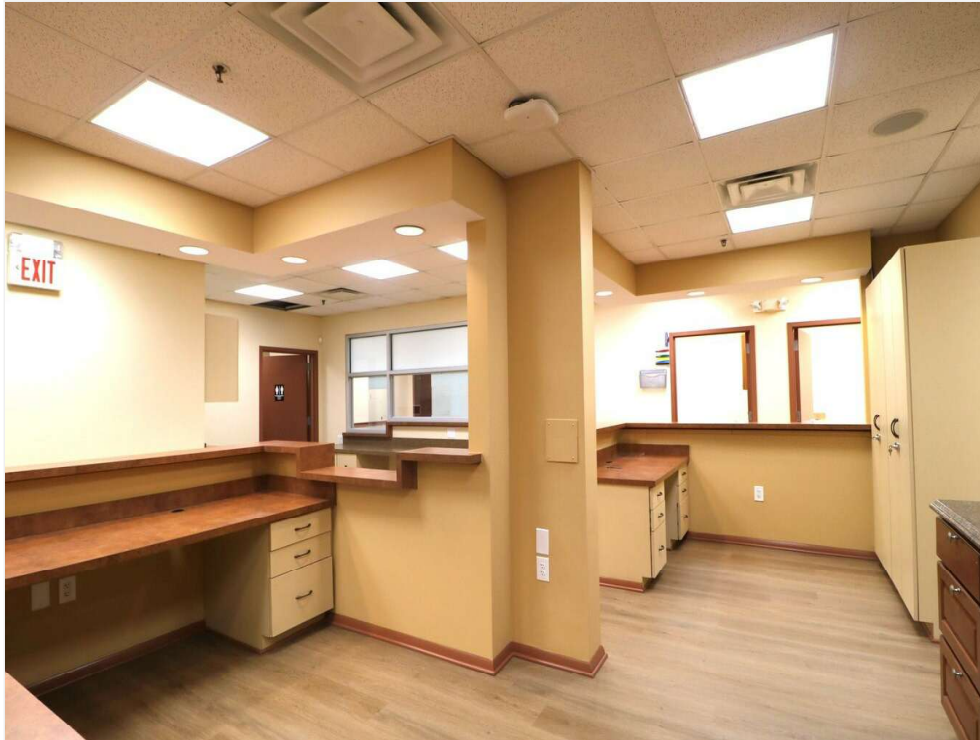


Interior Photo

1167 McBride Ave

1167 McBride Ave, Woodland Park, NJ 07424

Property Photos



Interior Photo



IMG_8180

1167 McBride Ave

1167 McBride Ave, Woodland Park, NJ 07424

Property Photos



Interior Photo



Exam. room

1167 McBride Ave

1167 McBride Ave, Woodland Park, NJ 07424

Property Photos



Exam. room



Kitchenette

1167 McBride Ave

1167 McBride Ave, Woodland Park, NJ 07424

Property Photos



Office



Exam room

1167 McBride Ave

1167 McBride Ave, Woodland Park, NJ 07424

Property Photos



Exam room



Interior Photo

For more listing information visit:

<https://www.loopnet.com/Listing/1167-McBride-Ave-Woodland-Park-NJ/40469874/>

1167 McBride Ave

1167 McBride Ave, Woodland Park, NJ 07424

Property Photos



Lobby



Building Photo

1167 McBride Ave

1167 McBride Ave, Woodland Park, NJ 07424

Property Photos



20260512_133601



20260512_133619

1167 McBride Ave

1167 McBride Ave, Woodland Park, NJ 07424

Property Photos



20260512_133636



Util. room

For more listing information visit:

<https://www.loopnet.com/Listing/1167-McBride-Ave-Woodland-Park-NJ/40469874/>

1167 McBride Ave

1167 McBride Ave, Woodland Park, NJ 07424

Property Photos



back entrance

1167 McBride Ave

For more listing information visit:
<https://www.loopnet.com/Listing/1167-McBride-Ave-Woodland-Park-NJ/40469874/>

1167 McBride Ave, Woodland Park, NJ 07424



Frank Cortes
frankacortes@aol.com
(973) 202-7585

The Diamond Agency
881 Allwood Rd, Suite 2
Clifton, NJ 07012

