

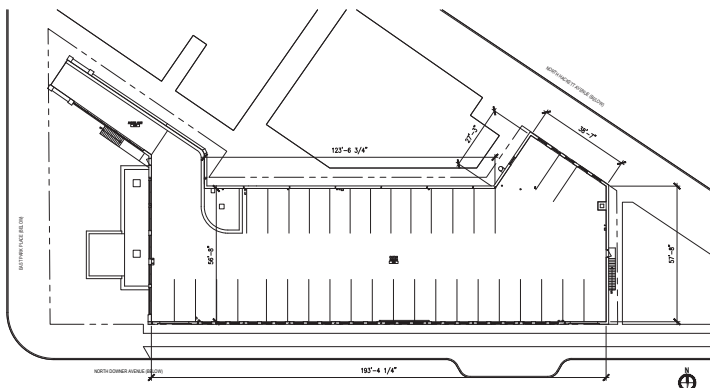
**FOR SALE**  
2605 E PARK PLACE  
MILWAUKEE, WI



**SECOND FLOOR  
ABOVE RETAIL CENTER**

SIZE: APPROX. 13,000 SF

SALE PRICE: \$550,000



**MICHAEL A. TESTA, CCIM**  
815-482-0105  
MTESTA@HUNTER-RE.COM  
HUNTER-RE.COM

**MATT HUNTER**  
414-931-9931  
MHUNTER@HUNTER-RE.COM



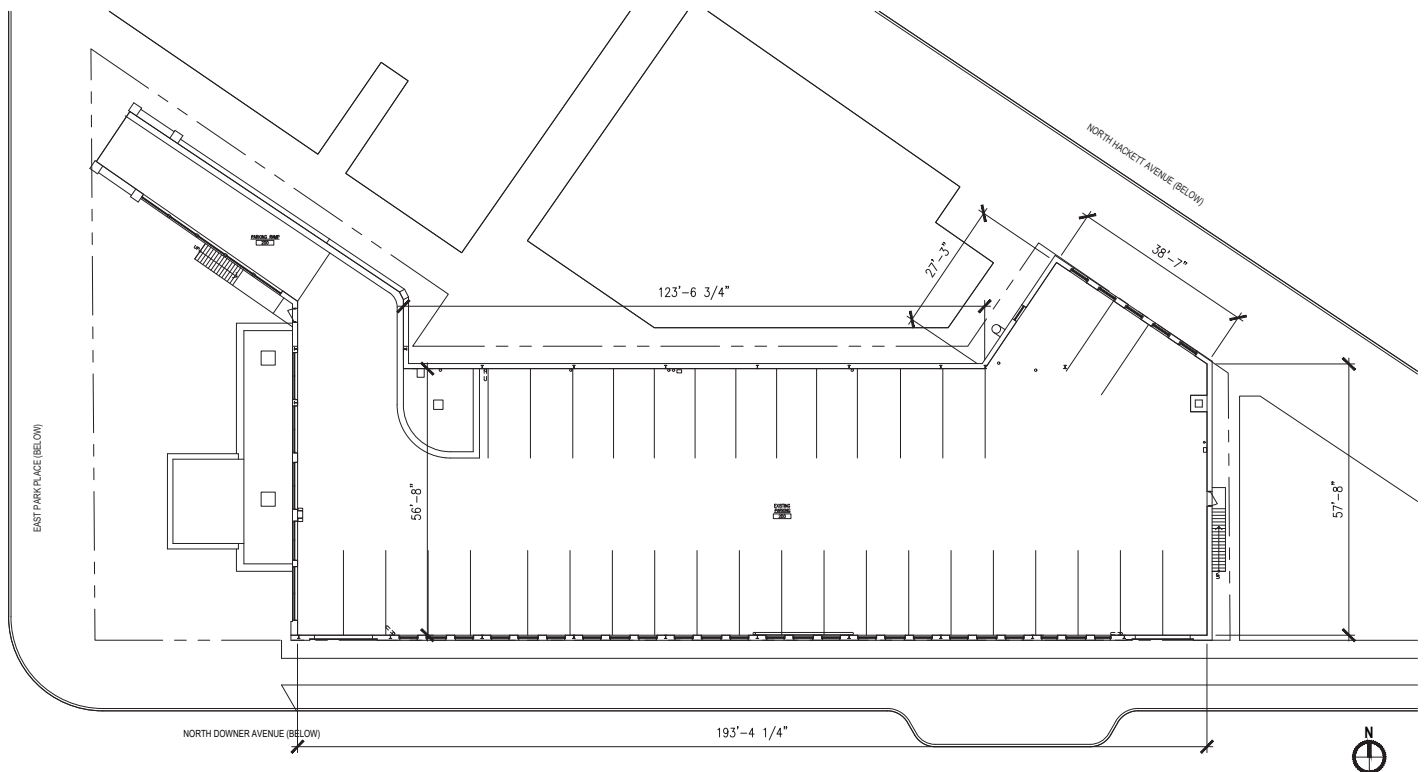
# PROPERTY DETAILS

- Space is above retail strip center and second floor vacant space is located at 2605 E Park Place
- Located along the heavily trafficked Downer Avenue on Milwaukee's East Side
- Building Size: 16,527 SF
- Parking Size: Approx. 13,000 SF
- Year Built: 1912
- Sale Price: \$550,000 (as is)



# FLOOR PLAN

## SECOND FLOOR | APPROX. 13,000 SF



**MICHAEL A. TESTA, CCIM**  
815-482-0105  
MTESTA@HUNTER-RE.COM  
HUNTER-RE.COM

**MATT HUNTER**  
414-931-9931  
MHUNTER@HUNTER-RE.COM



# PROPERTY PHOTOS



**MICHAEL A. TESTA, CCIM**  
815-482-0105  
MTESTA@HUNTER-RE.COM  
HUNTER-RE.COM

**MATT HUNTER**  
414-931-9931  
MHUNTER@HUNTER-RE.COM





DEMOGRAPHICS			
	1 MILE	3 MILES	5 MILES
Population	22,798	115,992	277,558
Households	10,298	56,861	119,460
Median Household Income	\$56,644	\$54,972	\$42,801

TRAFFIC COUNTS	
Street	Visitors Per Day
N. Humboldt Avenue	7,300

**MICHAEL A. TESTA, CCIM**  
 815-482-0105  
 MTESTA@HUNTER-RE.COM  
 HUNTER-RE.COM

**MATT HUNTER**  
 414-931-9931  
 MHUNTER@HUNTER-RE.COM



# STATE OF WISCONSIN | DISCLOSURE TO CUSTOMERS

Prior to negotiating on your behalf the brokerage firm, or an agent associated with the firm, must provide you the following disclosure statement:

## **DISCLOSURE TO CUSTOMERS**

You are a customer of the brokerage firm (hereinafter Firm). The Firm is either an agent of another party in the transaction or a subagent of another firm that is the agent of another party in the transaction. A broker or a salesperson acting on behalf of the Firm may provide brokerage services to you. Whenever the Firm is providing brokerage services to you, the Firm and its brokers and salespersons (hereinafter Agents) owe you, the customer, the following duties:

- (a) The duty to provide brokerage services to you fairly and honestly.
- (b) The duty to exercise reasonable skill and care in providing brokerage services to you.
- (c) The duty to provide you with accurate information about market conditions within a reasonable time if you request it, unless disclosure of the information is prohibited by law.
- (d) The duty to disclose to you in writing certain Material Adverse Facts about a property, unless disclosure of the information is prohibited by law. (See Definition of Material Adverse Facts below).
- (e) The duty to protect your confidentiality. Unless the law requires it, the Firm and its Agents will not disclose your confidential information or the confidential information of other parties.
- (f) The duty to safeguard trust funds and proposals in an objective and unbiased manner and disclose the advantages and disadvantages of the proposals. other property held by the Firm or its Agents.
- (g) The duty, when negotiating, to present contract proposals in an objective and unbiased manner and disclose the advantages and disadvantages of the proposals.
- Please review this information carefully. An Agent of the Firm can answer your questions about brokerage services, but if you need legal advice, tax advice, or a professional home inspection, contact an attorney, tax advisor, or home inspector. This disclosure is required by section 452.135 of the Wisconsin statutes and is for information only. It is a plain-language summary of the duties owed to a customer under section 452.133(1) of the Wisconsin statutes.

## **CONFIDENTIALITY NOTICE TO CUSTOMERS**

The Firm and its Agents will keep confidential any information given to the Firm or its Agents in confidence, or any information obtained by the Firm and its Agents that a reasonable person would want to be kept confidential, unless the information must be disclosed by law or you authorize the Firm to disclose particular information. The Firm and its Agents shall continue to keep the information confidential after the Firm is no longer providing brokerage services to you.

- The following information is required to be disclosed by law:
  1. Material Adverse Facts, as defined in Wis. Stat. § 452.01(5g) (see "Definition of Material Adverse Facts" below).
  2. Any facts known by the Firm or its Agents that contradict any information included in a written inspection report on the property or real estate that is the subject of the transaction.

To ensure that the Firm and its Agents are aware of what specific information you consider confidential, you may list that information below. At a later time, you may also provide the Firm or its Agents with other Information you consider to be confidential.

**CONFIDENTIAL INFORMATION:** \_\_\_\_\_

**NON-CONFIDENTIAL INFORMATION** (the following information may be disclosed by the Firm and its Agents): \_\_\_\_\_

(Insert information you authorize to be disclosed, such as financial qualification information.)

**THIS IS A DISCLOSURE AND DOES NOT CREATE A CONTRACT. THIS DISCLOSURE IS TO BE PROVIDED BY AN AGENT ASSOCIATED WITH A LISTING FIRM OR WITH A SUBAGENT FIRM PROVIDING BROKERAGE SERVICES TO A BUYER OR TENANT.**

## **DEFINITION OF MATERIAL ADVERSE FACTS**

A "Material Adverse Fact" is defined in Wis. Stat. § 452.01(5g) as an Adverse Fact that a party indicates is of such significance, or that is generally recognized by a competent licensee as being of such significance to a reasonable party, that it affects or would affect the party's decision to enter into a contract or agreement concerning a transaction or affects or would affect the party's decision about the terms of such a contract or agreement.

An "Adverse Fact" is defined in Wis. Stat. § 452.01(1e) as a condition or occurrence that a competent licensee generally recognizes will significantly and adversely affect the value of the property, significantly reduce the structural integrity of improvements to real estate, or present a significant health risk to occupants of the property; or information that indicates that a party to a transaction is not able to or does not intend to meet his or her obligations under a contract or agreement made concerning the transaction.

## **NOTICE ABOUT SEX OFFENDER REGISTRY**

You may obtain information about the sex offender registry and persons registered with the registry by contacting the Wisconsin Department of Corrections on the Internet at <http://www.doc.wi.gov> or by telephone at 608-240-5830.