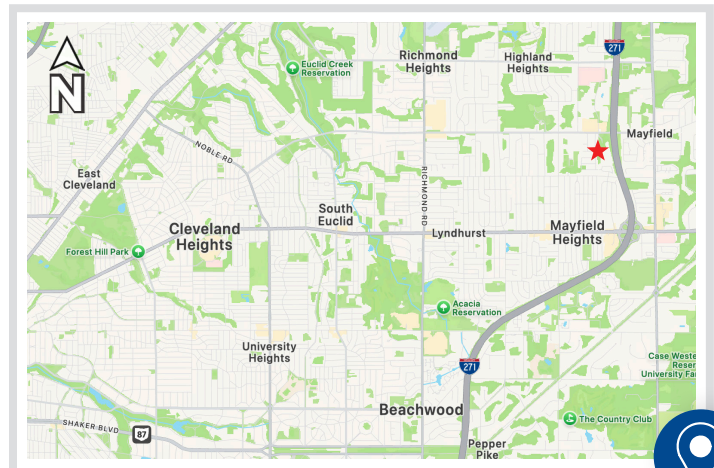


**6300 Wilson Mills Road
Mayfield Village, OH 44143**

AVAILABLE

OVERVIEW

- 3 Buildings | ±600,000 SF (Divisible)
±104,000 SF – North Building (4 Stories)
±175,000 SF – West Building (4 Stories)
±325,000 SF – East Building (5 Stories)
- Built 1974 (N) | 1993 (E) | 1994 (W)
- ±42 Acres
- ±2,100 feet of frontage on I-271
- Office - Laboratory Zoning
- (3) Parking Decks and (5) Surface Lots
2,584 Parking Spots
- Parking Ratio: 6.2 per 1,000
- (2) Backup Generators



 **PREMIER**
Development Partners



FOR MORE INFORMATION, PLEASE CONTACT:

Kevin Callahan | 216.469.2143
kevin@premierdevelop.com

Spencer Piszczak | 216.496.7000
spencer@premierdevelop.com

Information provided is obtained from sources deemed to be reliable, but is not guaranteed.

**6300 Wilson Mills Road
Mayfield Village, OH 44143**

SITE PLAN





**6300 Wilson Mills Road
Mayfield Village, OH 44143**

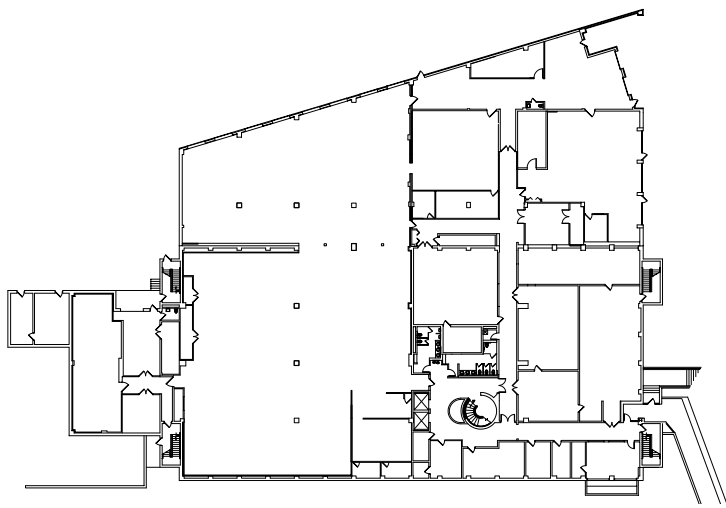
AVAILABLE



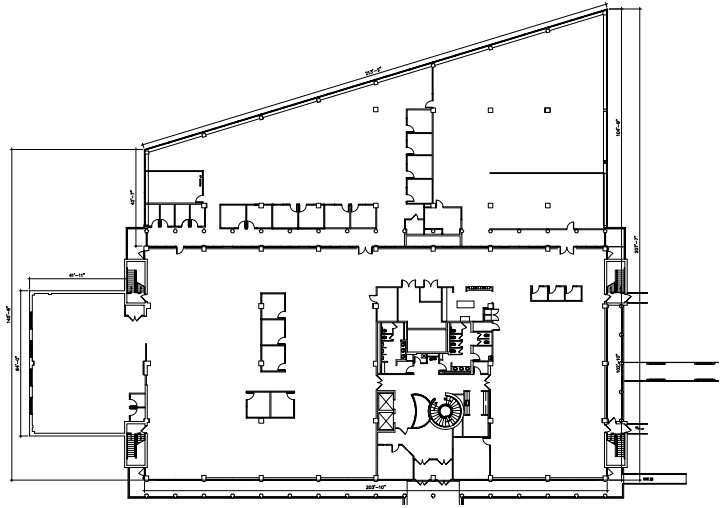


**6300 Wilson Mills Road
Mayfield Village, OH 44143**

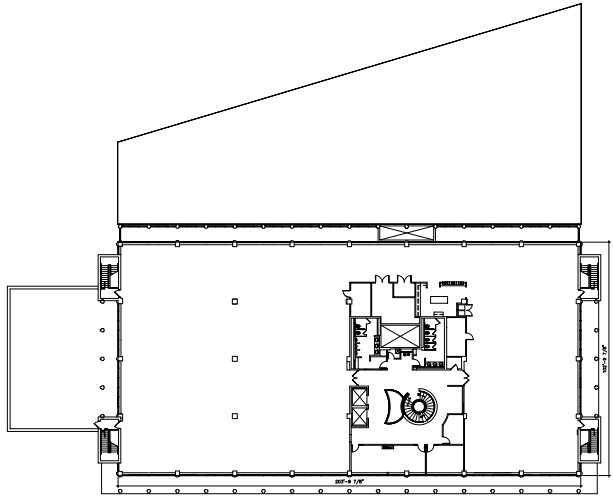
FLOOR PLAN – NORTH



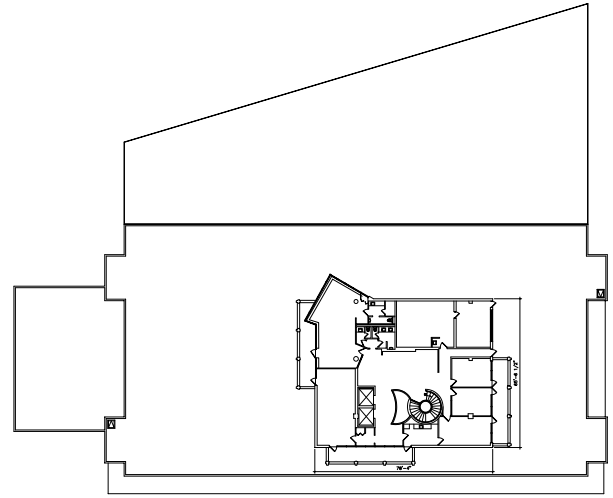
Ground Floor



First Floor



Second Floor

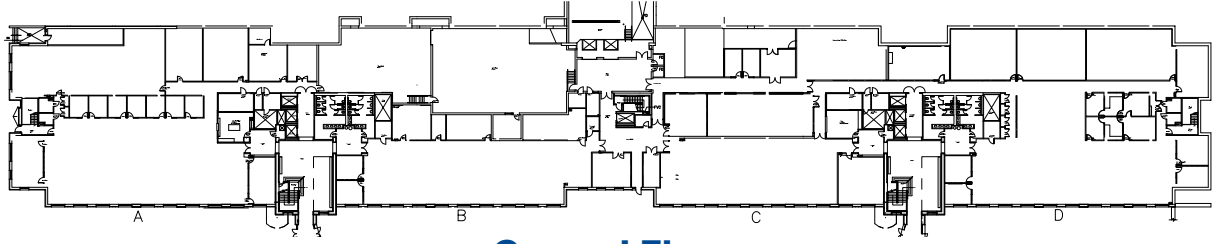


Third Floor

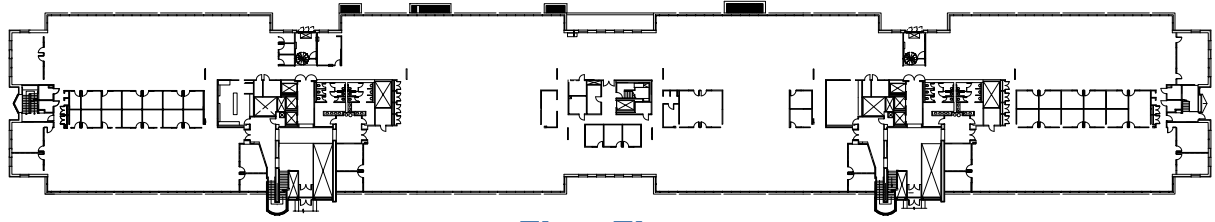


**6300 Wilson Mills Road
Mayfield Village, OH 44143**

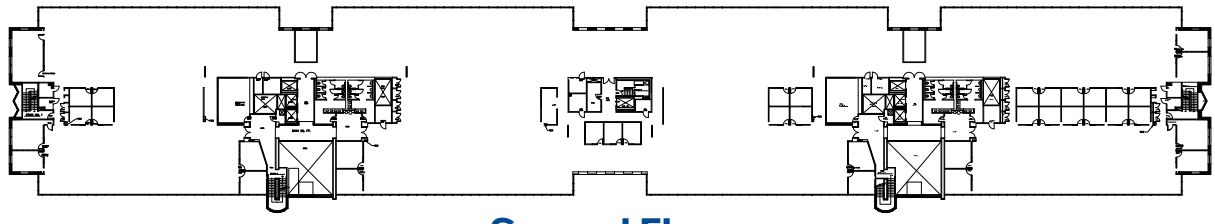
FLOOR PLAN – EAST



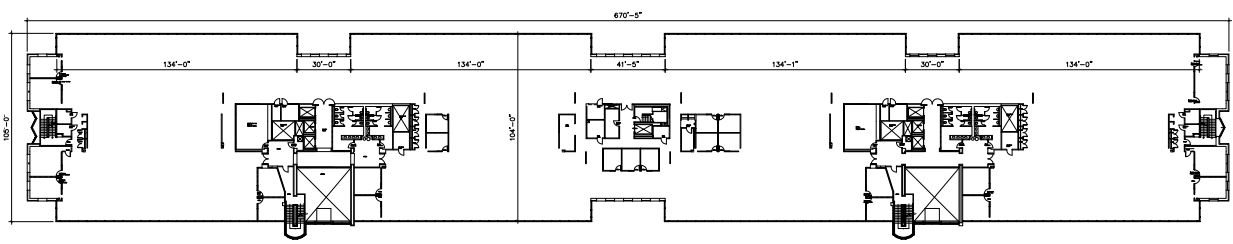
Ground Floor



First Floor



Second Floor



Third Floor

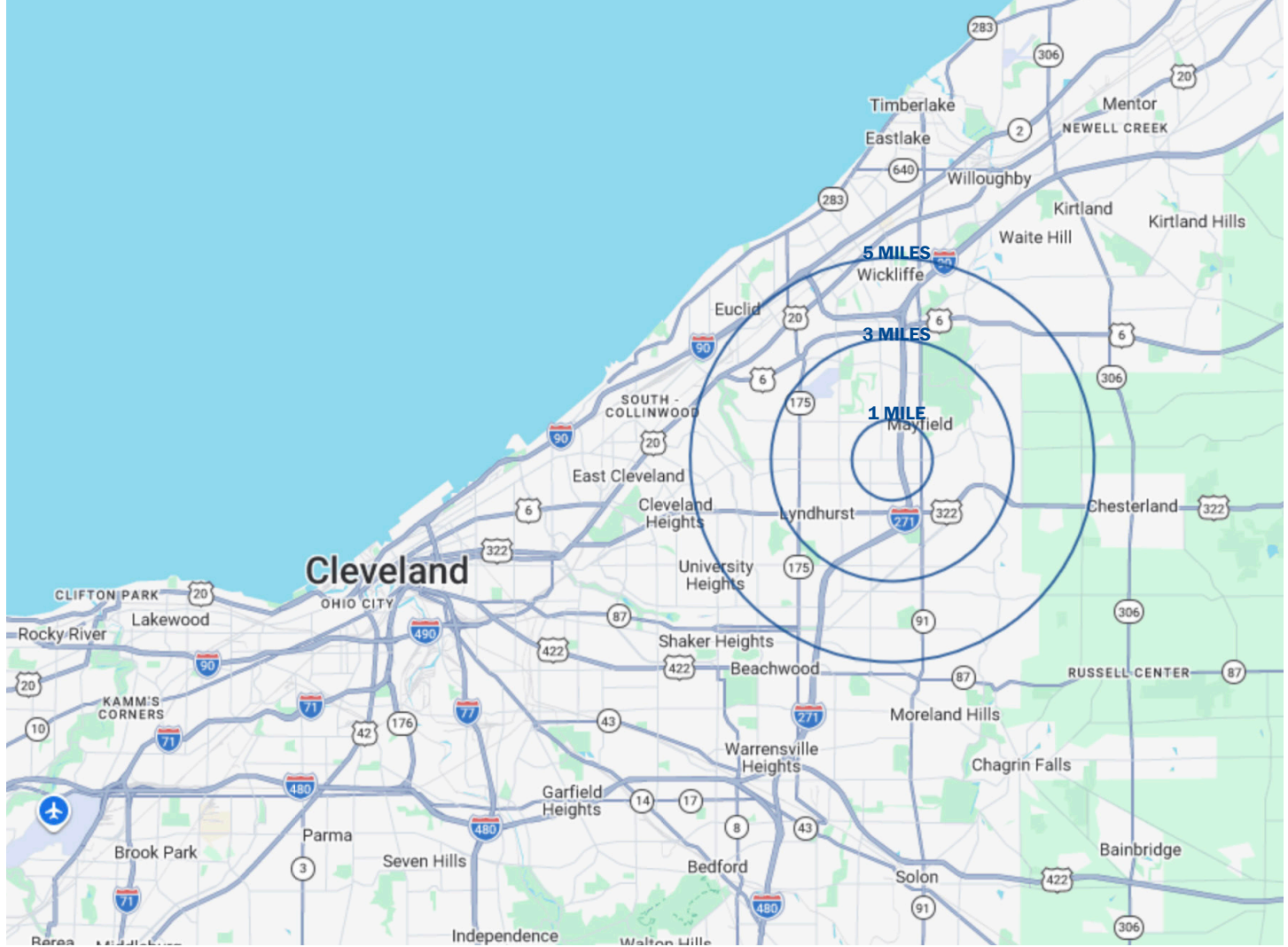


Fourth Floor



**6300 Wilson Mills Road
Mayfield Village, OH 44143**

AVAILABLE



	1 MILE	3 MILES	5 MILES
Population	9,987	46,859	119,224
Employees	12,253	34,051	66,188
Bachelor's Degree (Or Higher)	47.4%	51.4%	49.9%
Average Household Income	\$87,971	\$115,217	\$111,743
Median Household Value	\$229,813	\$225,168	\$224,169



**6300 Wilson Mills Road
Mayfield Village, OH 44143**

AVAILABLE

