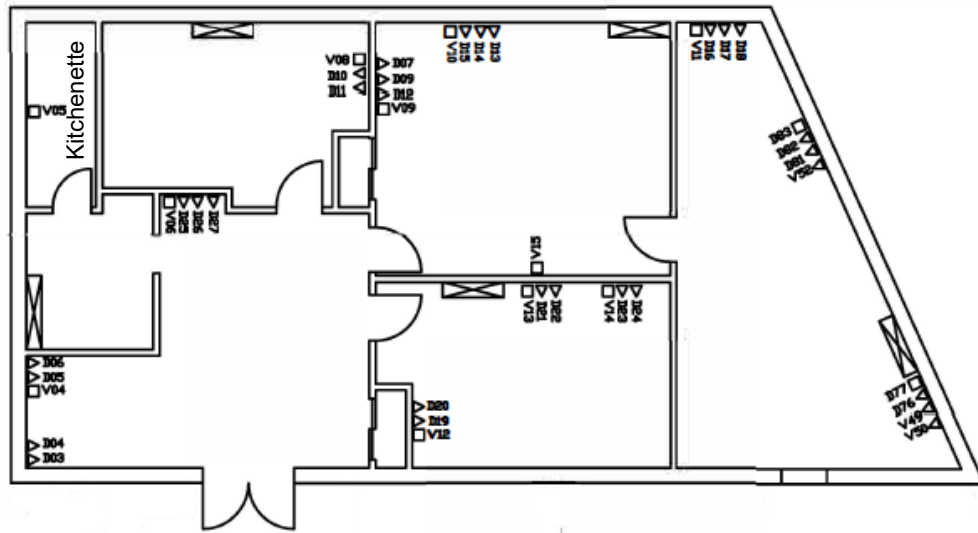


# Suite 106

View the  
360° Tour

> [CLICK HERE TO VIEW](#)



## Unit Overview

Suite Includes:  
2 Private Offices  
Large collaboration area  
Kitchenette  
Reception Area  
Vaulted Ceilings

1,440 sq ft of office space  
Monthly Rent: Approximately \$2,230

\*Includes common area  
maintenance, property tax,  
insurance, and estimated utilities