

24055 JEFFERSON AVENUE
ST. CLAIR SHORES, MICHIGAN



**SIGNATURE
ASSOCIATES**
KNOW SIGNATURE | KNOW RESULTS

OFFICE FOR SALE OR LEASE

For Sale: 20,800 Square Feet

For Lease: 500 – 3,000 Square Feet



PROPERTY FEATURES

- For Lease – 500, 1,170, 1,400 & 3,000 square feet suites available
- For Sale – 20,800 square foot building
- High end office finishes and build-out
- Elevator access to 2nd floor
- Ample parking for tenants and clients
- Prime location off Jefferson Avenue and the “Nautical Mile”
- Convenient access to I-94/I-696 expressways
- Lease Rate: \$26.00/sq. ft. Gross
- Sale Price: \$2,500,000 (\$120.19/sq. ft.)



For more information, please contact:

CHRIS MONSOUR
(248) 948 0107
cmonsour@signatureassociates.com

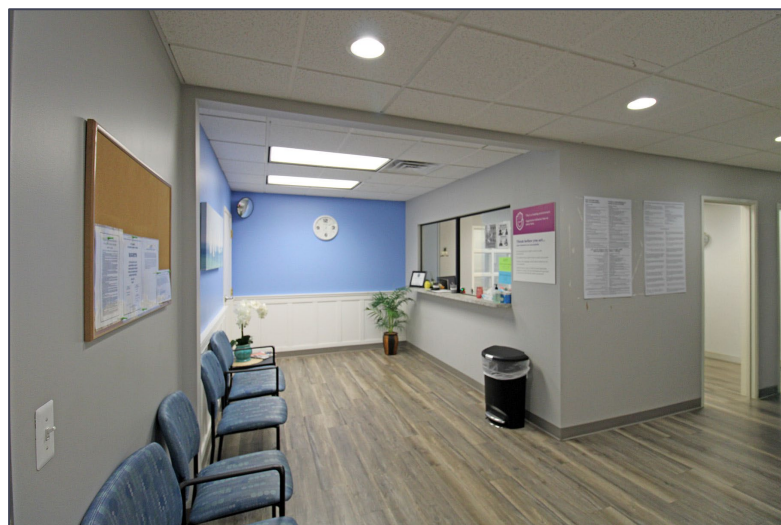
SIGNATURE ASSOCIATES
One Towne Square, Suite 1200
Southfield, MI 48076
www.signatureassociates.com

24055 Jefferson Avenue – St. Clair Shores, Michigan

Office For Sale or Lease

For Lease
500 - 3,000 SF

For Sale
20,800 SF



For more information, please contact:

CHRIS MONSOUR
(248) 948 0107
cmonsour@signatureassociates.com

SIGNATURE ASSOCIATES
One Towne Square, Suite 1200
Southfield, MI 48076
www.signatureassociates.com

24055 Jefferson Avenue – St. Clair Shores, Michigan

Office For Sale or Lease

For Lease
500 - 3,000 SF

For Sale
20,800 SF



For more information, please contact:

CHRIS MONSOUR
(248) 948 0107
cmonsour@signatureassociates.com

SIGNATURE ASSOCIATES
One Towne Square, Suite 1200
Southfield, MI 48076
www.signatureassociates.com

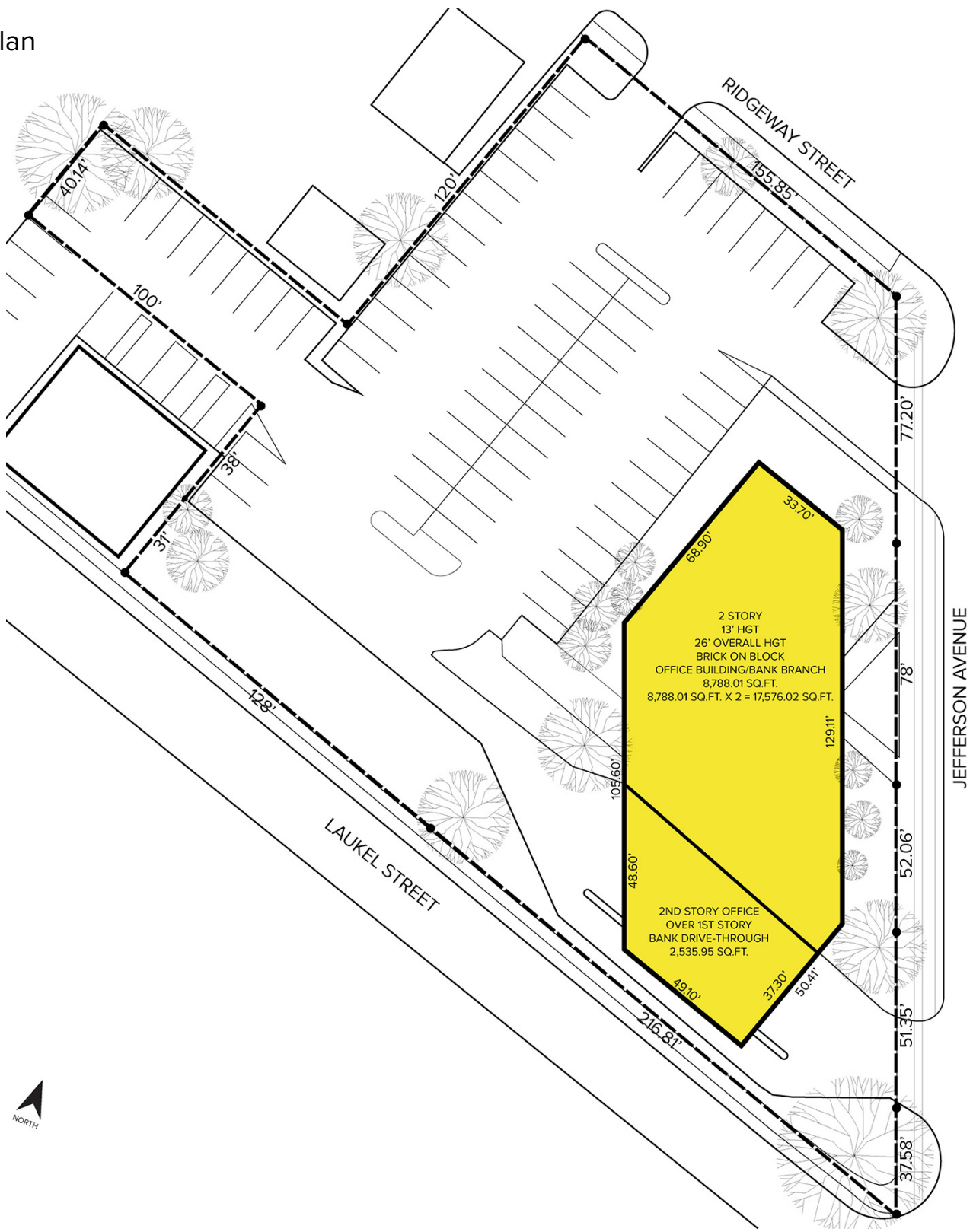
24055 Jefferson Avenue – St. Clair Shores, Michigan

Office For Sale or Lease

For Lease
500 - 3,000 SF

For Sale
20,800 SF

Site Plan



For more information, please contact:

CHRIS MONSOUR
(248) 948 0107
cmonsour@signatureassociates.com

SIGNATURE ASSOCIATES
One Towne Square, Suite 1200
Southfield, MI 48076
www.signatureassociates.com

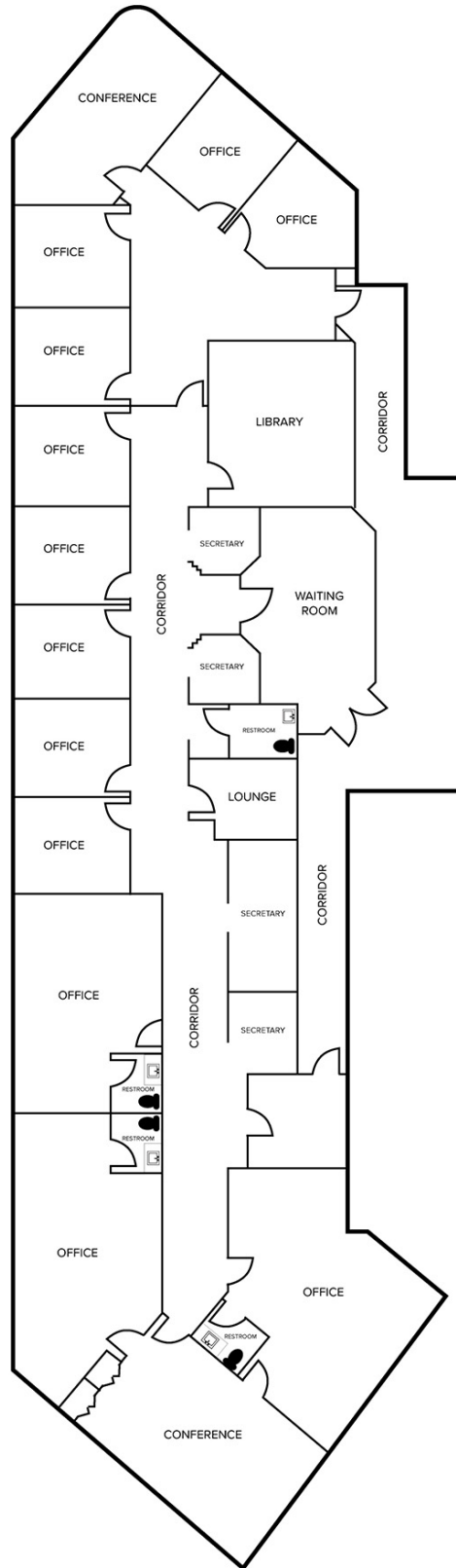
24055 Jefferson Avenue – St. Clair Shores, Michigan

Office For Sale or Lease

For Lease
500 - 3,000 SF

For Sale
20,800 SF

Floor Plan



For more information, please contact:

CHRIS MONSOUR
(248) 948 0107
cmonsour@signatureassociates.com

SIGNATURE ASSOCIATES
One Towne Square, Suite 1200
Southfield, MI 48076
www.signatureassociates.com

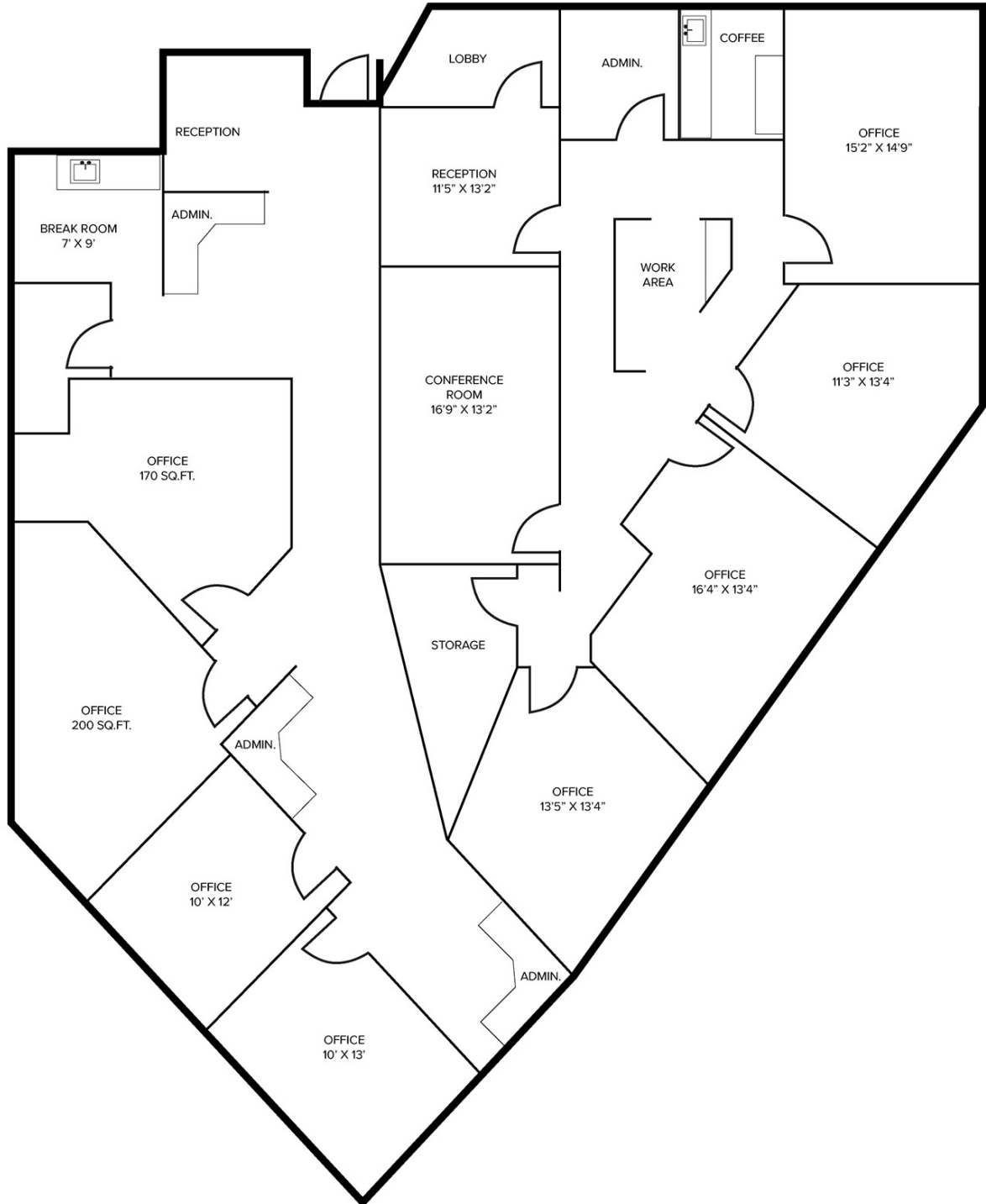
24055 Jefferson Avenue – St. Clair Shores, Michigan

Office For Sale or Lease

For Lease
500 - 3,000 SF

For Sale
20,800 SF

Floor Plan Suite 101



For more information, please contact:

CHRIS MONSOUR
(248) 948 0107
cmonsour@signatureassociates.com

SIGNATURE ASSOCIATES
One Towne Square, Suite 1200
Southfield, MI 48076
www.signatureassociates.com

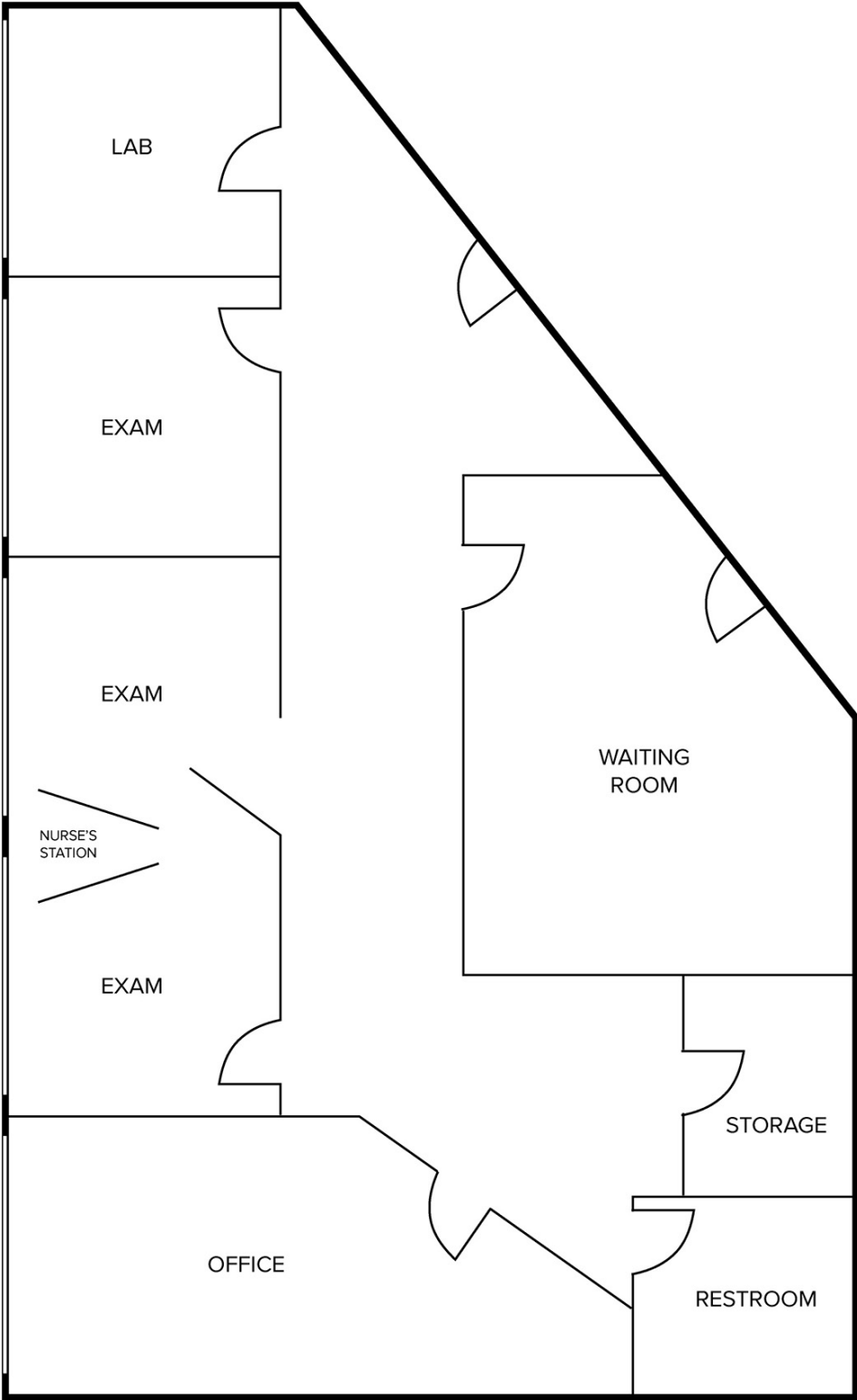
24055 Jefferson Avenue – St. Clair Shores, Michigan

Office For Sale or Lease

For Lease
500 - 3,000 SF

For Sale
20,800 SF

Floor Plan Suite 210



For more information, please contact:

CHRIS MONSOUR
(248) 948 0107
cmonsour@signatureassociates.com

SIGNATURE ASSOCIATES
One Towne Square, Suite 1200
Southfield, MI 48076
www.signatureassociates.com

Information is subject to verification and no liability for errors or omissions is assumed. Price is subject to change and listing withdrawal.

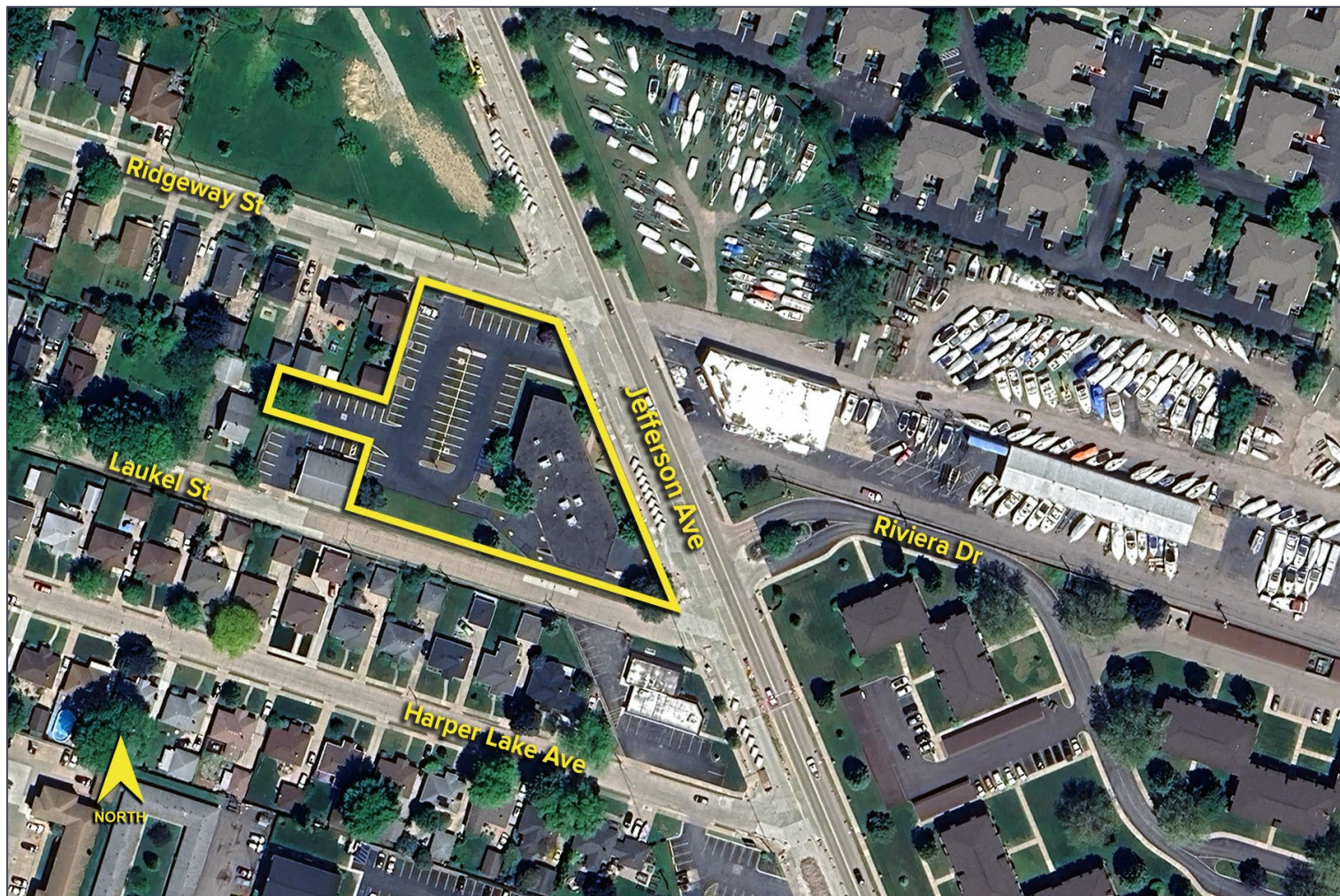
24055 Jefferson Avenue – St. Clair Shores, Michigan

Office For Sale or Lease

For Lease
500 - 3,000 SF

For Sale
20,800 SF

Aerial



For more information, please contact:

CHRIS MONSOUR
(248) 948 0107
cmonsour@signatureassociates.com

SIGNATURE ASSOCIATES
One Towne Square, Suite 1200
Southfield, MI 48076
www.signatureassociates.com