

## Commercial Office -Storage - 2<sup>nd</sup> Floor - No Elevator

Office 1 - 16' x 16'

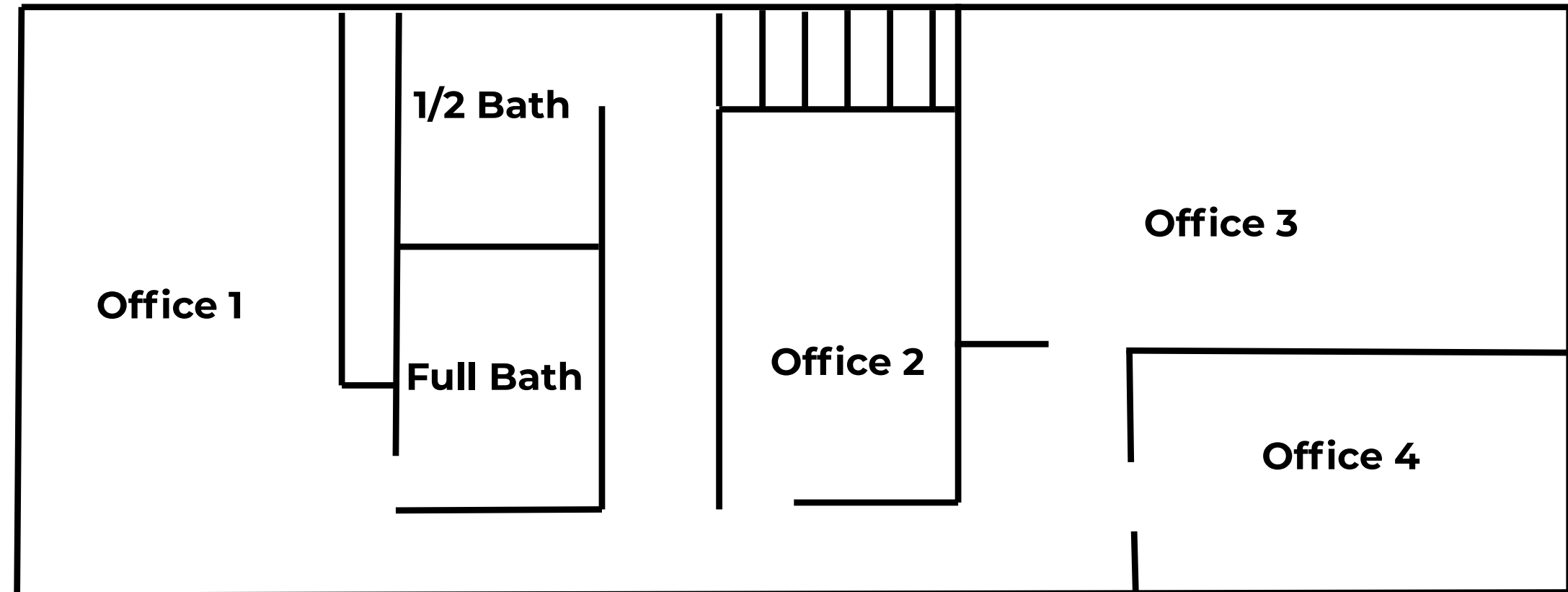
Office 2 - 7.5' x 12.5'

Office 3 - 8' x 16'

Office 4 - 8' x 11'

Measurements are approximate

Drawing is not to scale.



**Rent is \$1,800 a month, this includes a \$200 utility credit**

**2655 6th Ave. S., St. Petersburg, FL 33712**

**Contact Mike Schultz 727-463-3374 - Insta Real Estate Solutions**