

Sauter & Associates LLC.

COMMERCIAL AND INVESTMENT
REAL ESTATE

William **Buddy** Sauter, Licensed R.E. Broker

St. Petersburg - Tampa

P: 727-421-3706 F: 813-434-2341

www.buddysauter.com e-mail: buddy@buddysauter.com

Featured Property

Clean, exceptionally well maintained, retail / office building.

Completely remodeled, renovated and refitted in 2020.

Address: 1156 Jasper Street, Largo, Florida 33770

Sale Price: \$695,000



Property Attributes

- 4452 ft² building for single user.
- 8450-square-foot lot (1/5 acre).
- 19 marked parking spaces along the front, and side, plus space for overflow in the back.
- Located adjacent a large shopping center with T.J. Max, Ross Dress for Less and LA Fitness.
- Currently configured for a Medical Supply Retail / Wholesale business.
- New Roof, Air Conditioning Plumbing, Wiring and Interior in 2020 as part of a complete renovation.
- Flexible "General Commercial" Land use in Largo, Florida allows a wide variety of office, retail, wholesale and services uses.

Directions to Property

From US Hwy 19 (34th Street) in Pinellas County: Take US Hwy 19 to the Bellaire Road exit, and go west on Bellaire Road. Turn left on Missouri Avenue and then turn right on Jasper Street. Proceed to the address on the right hand side.

Using GPS: For GPS, use 1156 Jasper Street, Largo, Florida

Google Maps Link: <https://maps.app.goo.gl/aJ5Xsybpe5GQSDGY7>

Information has been secured from sources we believe reliable, but we make no representations or warranties, expressed or implied, as to its accuracy. All references to age, square feet, distance and expenses or use are approximate. Buyers should conduct their own investigations and rely on those results.

Sauter & Associates - Property Details - 727-421-3706

Address: 1156 Jasper Street, Largo, FL 33770

Location: Largo Florida near

Total Leasable Area: 4452 ft²

Land Use: General Commercial (GC) in Largo, Florida.

Parking: 19 marked spaces plus overflow / truck parking in back.

Power: 200 Amps of single-phase power.

Utilities: Water / Sewer / Electric / Internet / Phone

Year Originally Built: 1963. Complete renovation in 2020.

Taxing District: Largo, Florida

Rear roll door dimensions: 8 ft high X 6 ft wide

Present Use: Retail sales and service

Parcel Id: 27-29-15-97524-000-0760

Short Legal Description: WILDWOOD LOTS 75 & 76 & S 25FT OF W 103FT OF LOT 77

Allowable Uses: Office, Retail, Animal Grooming, Pet Stores, Veterinarian, Hair Salon / Barber, Restaurant, Schools, Daycare, Medical / Dental Lab, Arcades and many more.

Terms: Cash, SBA or conventional financing. Contact broker about financing options.

Contact listing agent to make an appointment for showing by calling (727) 421-3706.

Please do not disturb the tenants!



Information has been secured from sources we believe reliable, but we make no representations or warranties, expressed or implied, as to its accuracy. All references to age, square feet, distance and expenses or use are approximate. Buyers should conduct their own investigations and rely on those results.

1156 Jasper Street – Pictures

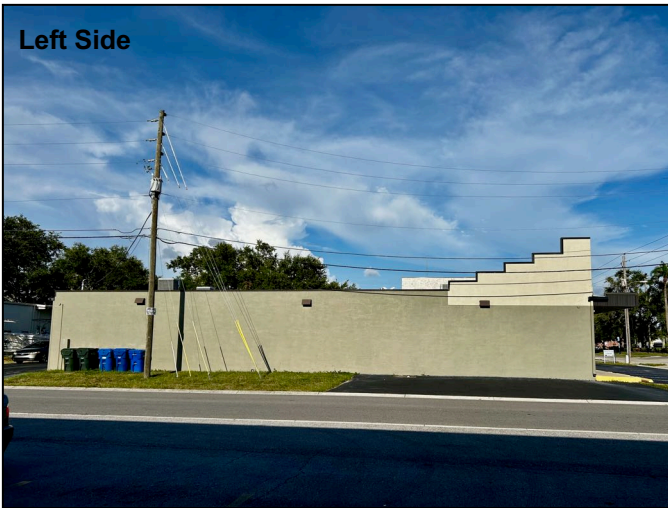
Back Right View



Front Left View



Left Side



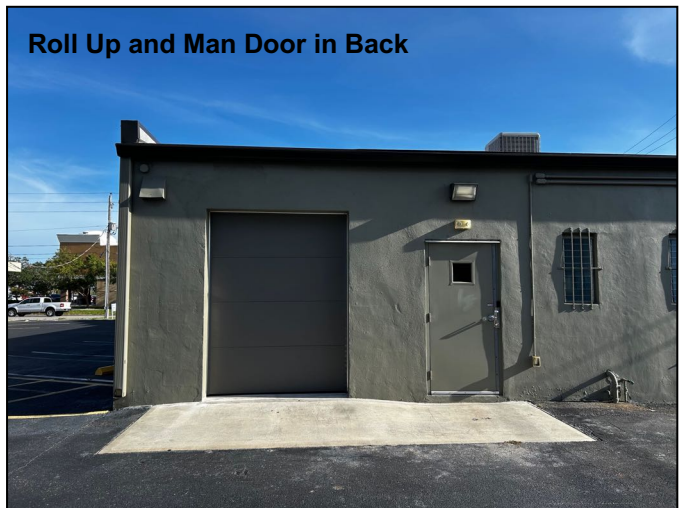
Parking Lot (All shown spots are for subject property)



Back Left View

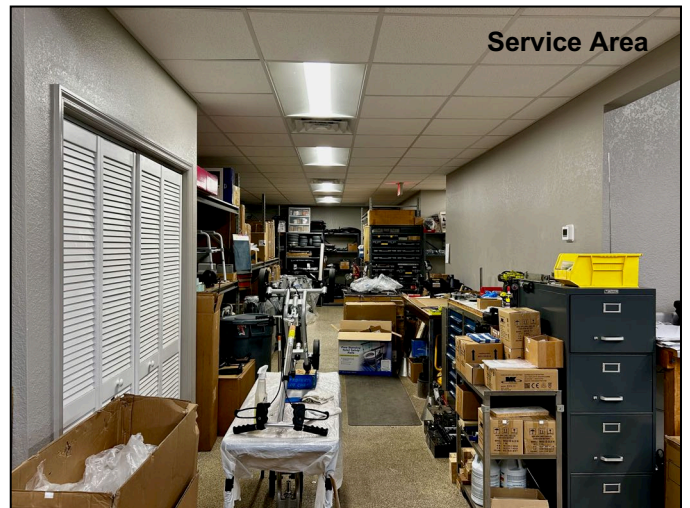
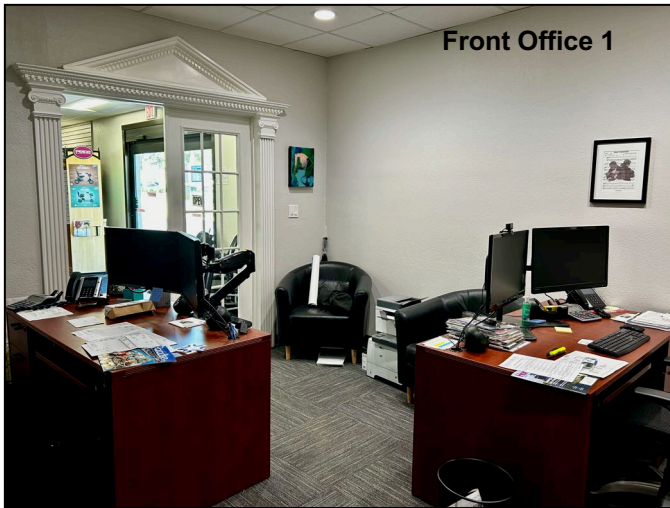


Roll Up and Man Door in Back



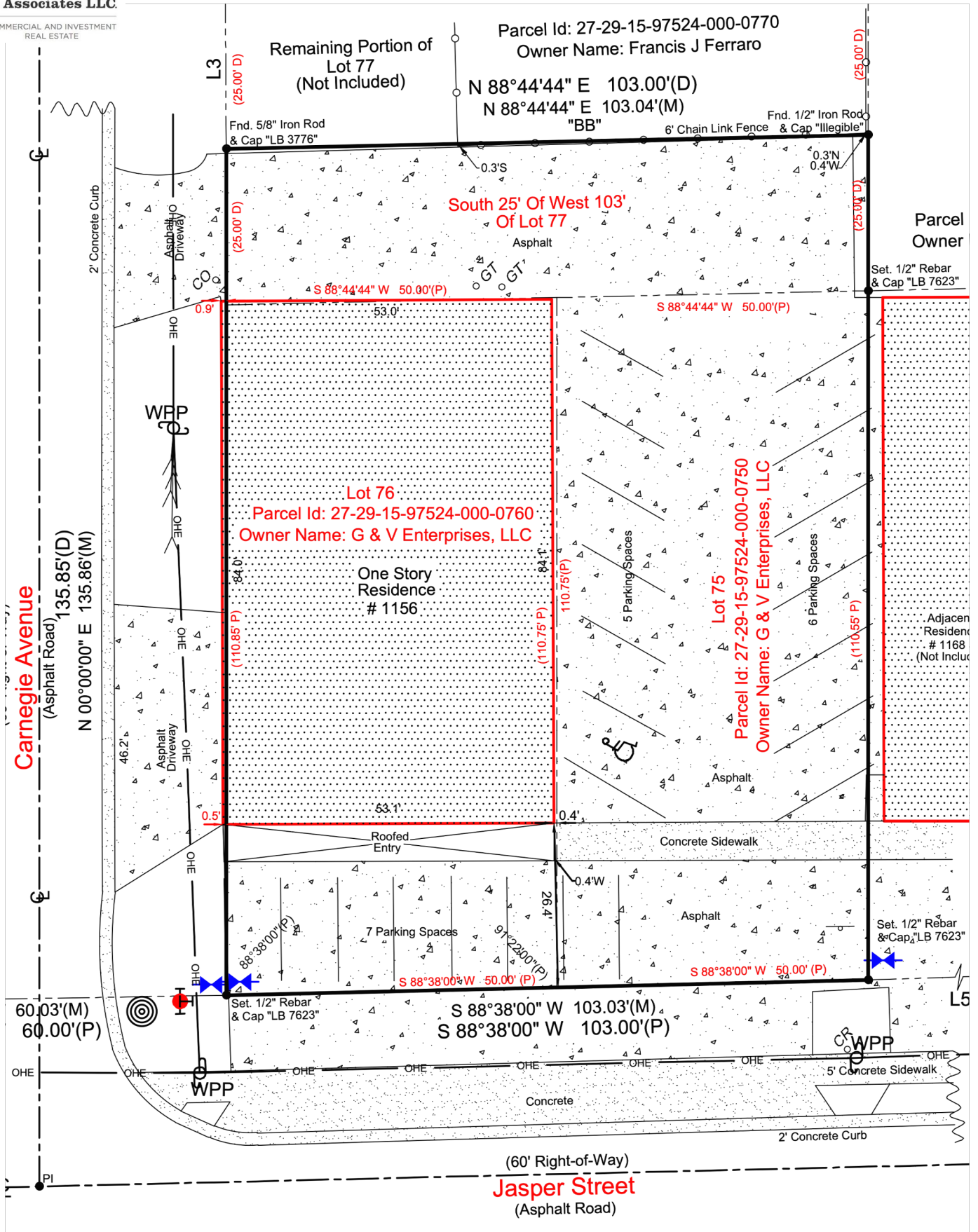
Information has been secured from sources we believe reliable, but we make no representations or warranties, expressed or implied, as to its accuracy. All references to age, square feet and expenses or use are approximate. Buyers should conduct their own investigations and rely on those results.

1156 Jasper Street – Pictures



Information has been secured from sources we believe reliable, but we make no representations or warranties, expressed or implied, as to its accuracy. All references to age, square feet and expenses or use are approximate. Buyers should conduct their own investigations and rely on those results.

Site Plan – 1156 Jasper Street

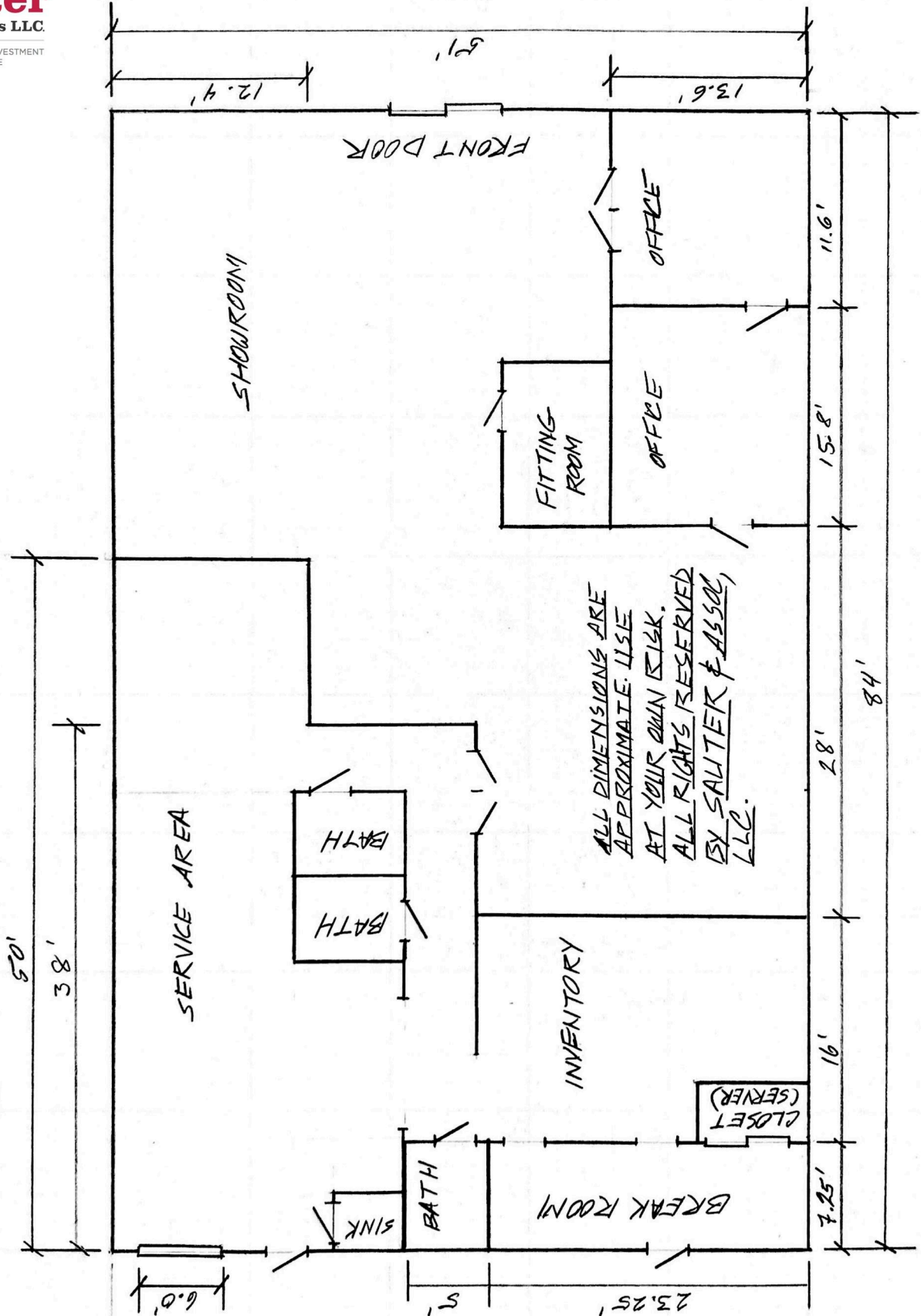


Information has been secured from sources we believe reliable, but we make no representations or warranties, expressed or implied, as to its accuracy. All references to age, square feet and expenses or use are approximate. Buyers should conduct their own investigations and rely on those results.

Sauter

& Associates LLC.

COMMERCIAL AND INVESTMENT
REAL ESTATE



Information has been secured from sources we believe reliable, but we make no representations or warranties, expressed or implied, as to its accuracy. All references to age, square feet, distance and expenses or use are approximate. Buyers should conduct their own investigations and rely on those results.