



# Grove Park Shopping Center

**TOTAL VISITORS**  
158.2K  
(12 MONTHS)

## OVERVIEW

1345 - 1370 Chestnut Street  
Orangeburg, SC 29115

For Lease  
Type: Retail  
Total SF: 93,265

Grove Park is strategically located at the bustling intersection of Chestnut Street and St. Matthews Road, right in the heart of Orangeburg. Our center boasts excellent visibility and a vibrant mix of tenants. From well-known national retailers like Food Lion and Republic Finance to beloved local businesses like Grove Park Pharmacy and The Palms, our center is a magnet for shoppers.

## RETAILERS INCLUDE



## LEASING ASSOCIATE



**Kevin Conway**  
Sr. Leasing Manager  
(757) 618-5932  
kconway@whlr.us

## DEMOGRAPHICS

	3 MILES	5 MILES	10 MILES
POPULATION	27,262	37,063	53,422
HOUSEHOLDS	10,455	13,834	19,674
AVG. HH INCOME (\$)	\$51,192	\$51,061	\$54,344
MEDIAN AGE	36	36	37

# Grove Park Shopping Center

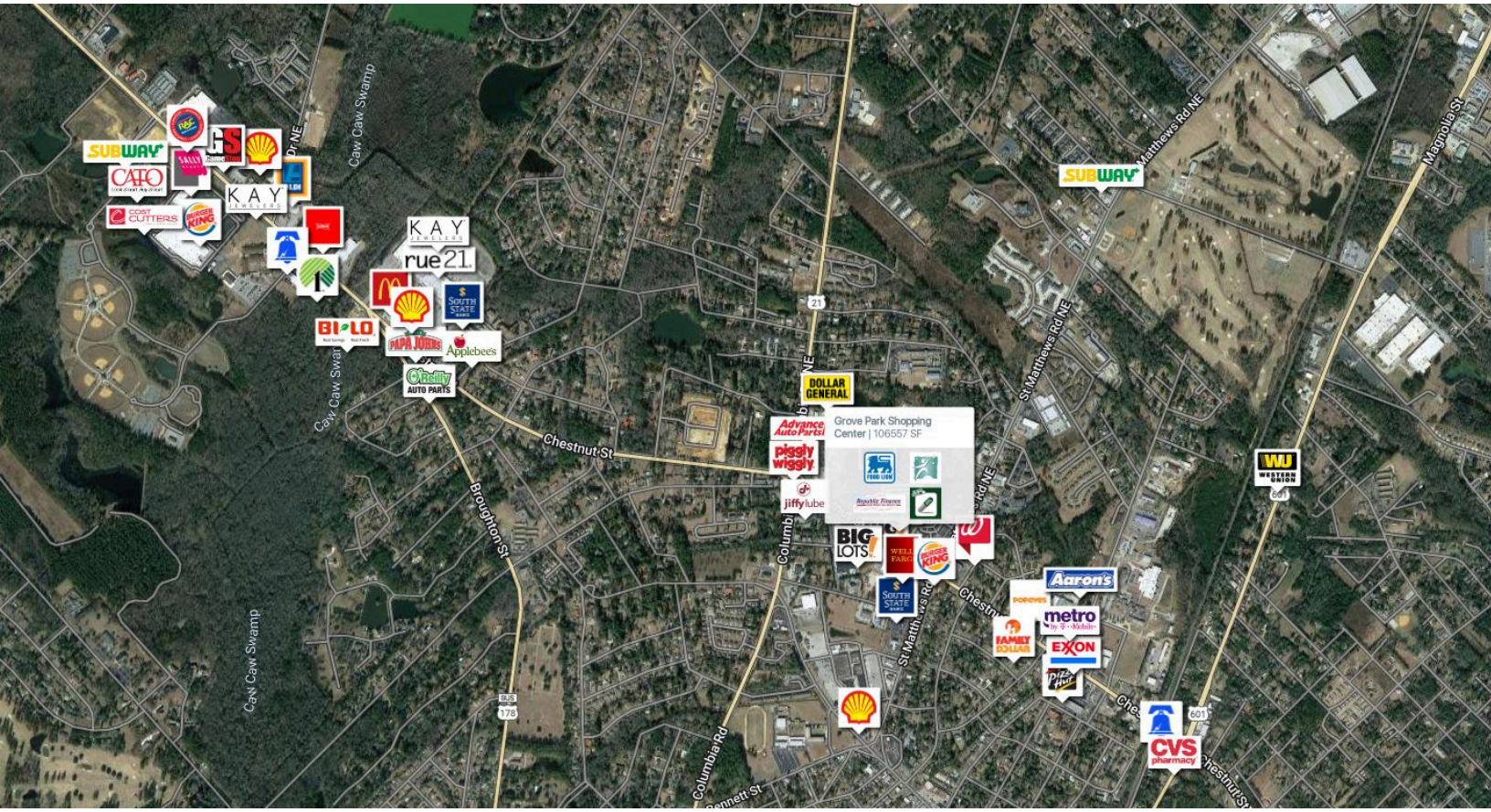
1345 - 1370 Chestnut Street  
Orangeburg, SC 29115



SUITE	TENANTS	S.F.	SUITE	TENANTS	S.F.
100	Food Lion	41,600	202	Credit Central	1,695
101	AVAILABLE	4,890	204	Creston Dental & Braces	8,541
102	Under the Palms	3,436	204A	Couture Beauty Bar	524
103A	Under the Palms (Storage)	650	206	Republic Finance	1,260
104A/106	Grove Park Pharmacy	3,450	208	Tokyo Steak & Seafood	5,008
104C	Unavailable	3,482	209	Tutoring Center	1,000
105A	Unavailable	3,810	210	70 East Tobacco	1,600
105B	Unavailable	6,000	212	Grove Park Pharmacy	9,104
112	Grove Park Pharmacy	4,301			
201	Beauty Line 4	6,206			

# Grove Park Shopping Center

1345 - 1370 Chestnut Street  
Orangeburg, SC 29115



**AADT: 17,238** (St. Matthews Road)  
**AADT: 28,241** (Chesnut Street)  
**Avg. Hourly Traffic: 1,364** (St. Matthews Road)  
**Avg. Hourly Traffic: 2,025** (Chesnut Street)

**DISCLAIMER**

The information contained herein has been obtained from sources we believe to be reliable; however, we have not investigated nor verified any information and make no guarantee, warranty or representation to the accuracy or completeness of information. By accepting this Marketing Brochure, you agree to release Wheeler Real Estate Company and WHLR and hold it harmless from any kind of claim, cost, expense, or liability arising out of your investigation and/or lease of this property. This Marketing Brochure and offering is subject to correction or errors and omissions, change of price, prior to sale/lease or withdrawal from the market, without notice.