

Orland Kensington Plaza

14600 - 14620 S LaGrange Road, Orland Park, IL 60462



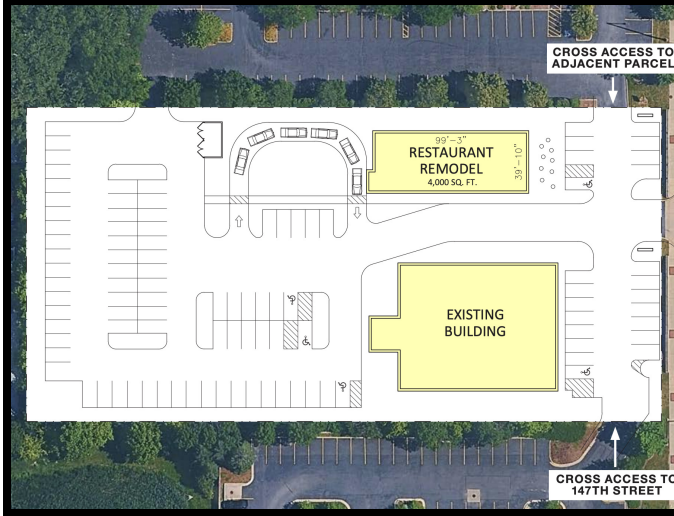
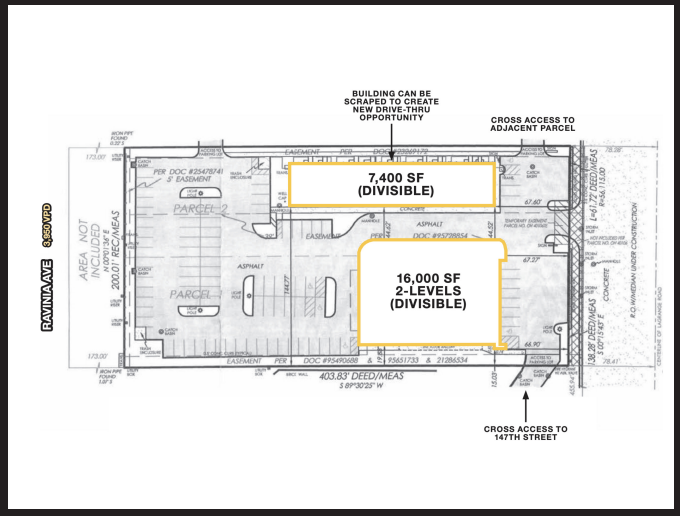
Available For SALE or LEASE!

ALEX RAMIREZ | 773.792.3000 x238 | 312.439.8272 | alex@troyrealtyltd.com
STEVE CIROMSKI | 773.792.3000 x302 | 847.612.8716 | stephen@troyrealtyltd.com
6625 N AVONDALE | CHICAGO, IL 60631 | 773.792.3000 | TROY-COMPANIES.COM

The information contained herein is from other sources believed to be reliable. No independent investigation of the property or the information contained herein has been made, and no representation is made as to the accuracy or completeness thereof. Terms are subject to errors, omissions and change without notice.

Orland Kensington Plaza

14600 - 14620 S LaGrange Road, Orland Park, IL 60462



ALEX RAMIREZ | 773.792.3000 x238 | 312.439.8272 | alex@troyrealtyltd.com
STEVE CIOROMSKI | 773.792.3000 x302 | 847.612.8716 | stephen@troyrealtyltd.com
6625 N AVONDALE | CHICAGO, IL 60631 | 773.792.3000 | TROY-COMPANIES.COM

The information contained herein is from other sources believed to be reliable. No independent investigation of the property or the information contained herein has been made, and no representation is made as to the accuracy or completeness thereof. Terms are subject to errors, omissions and change without notice.

Orland Kensington Plaza

14600 - 14620 S LaGrange Road, Orland Park, IL 60462



Map data ©2026 Imagery ©2026 Airbus, CNES / Airbus, Maxar Technologies,

ALEX RAMIREZ | 773.792.3000 x238 | 312.439.8272 | alex@troyrealtyltd.com
 STEVE CIOROMSKI | 773.792.3000 x302 | 847.612.8716 | stephen@troyrealtyltd.com
 6625 N AVONDALE | CHICAGO, IL 60631 | 773.792.3000 | TROY-COMPANIES.COM

The information contained herein is from other sources believed to be reliable. No independent investigation of the property or the information contained herein has been made, and no representation is made as to the accuracy or completeness thereof. Terms are subject to errors, omissions and change without notice.

Orland Kensington Plaza

14600 - 14620 S LaGrange Road, Orland Park, IL 60462

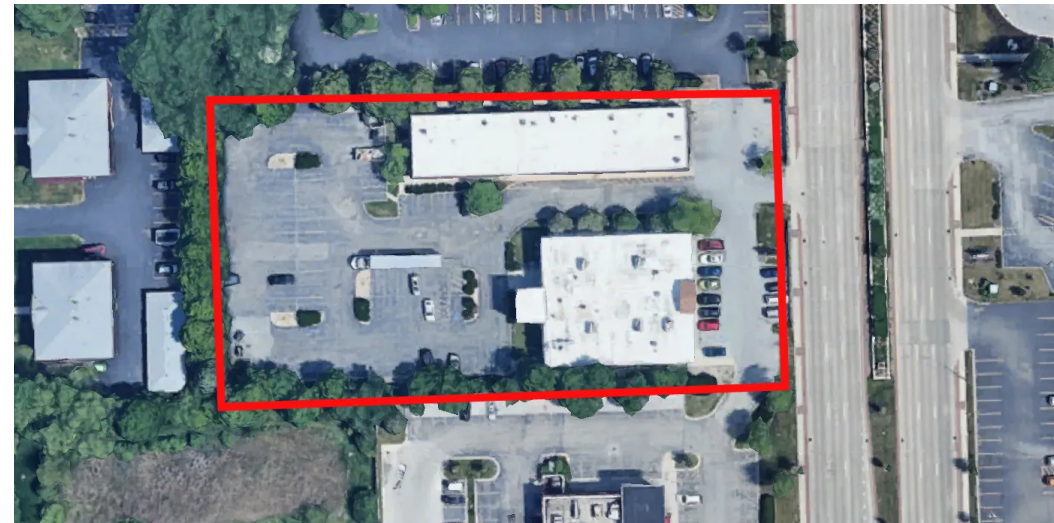


AVAILABILITY

- This exceptional 1.84-acre commercial redevelopment opportunity offers a flexible site configuration with two existing buildings totaling over 23,000 square feet. The property features a 16,000-square-foot multi-level building and a 7,400-square-foot retail building, both of which can be divided to accommodate multiple tenants or users. Strategically located within one of the area's premier retail corridors, the site is surrounded by nationally recognized retailers, restaurants, and major shopping destinations, generating strong consumer traffic and visibility. Whether for adaptive reuse, renovation, multi-tenant occupancy, or complete redevelopment, the property presents a rare opportunity in a highly sought-after commercial location.

PROPERTY HIGHLIGHTS

- Directly Across from Orland Square Mall
- Positioned Directly on LaGrange Road with Exposure to Approximately 38,600 Vehicles Daily
- Signalized Access with Direct Connectivity to 147th Street
- Located Within the Highly Trafficked LaGrange Road Retail Corridor
- Surrounded by Established National Retailers and Consumer Traffic Drivers
- Flexible Opportunity to Renovate Existing Structures or Pursue a Complete Redevelopment
- Excellent Exposure and Signage Potential Along One of the Area's Busiest Commercial Corridors



ALEX RAMIREZ | 773.792.3000 x238 | 312.439.8272 | alex@troyrealtyltd.com
STEVE CIOROMSKI | 773.792.3000 x302 | 847.612.8716 | stephen@troyrealtyltd.com
 6625 N AVONDALE | CHICAGO, IL 60631 | 773.792.3000 | TROY-COMPANIES.COM

