



EXCLUSIVE OFFER

3 MONTHS NET FREE

Available on new leases of 5 years or greater



INDUSTRIAL SPACE FOR LEASE

WM
WESTPORT
BUSINESS CENTRE

6625 TOMKEN ROAD, MISSISSAUGA, ON
UNIT 12-16

PROPERTY HIGHLIGHTS

Centrally located with access to all 400 series Highways

Public transit located at business parks doorstep

Professionally owned and managed complex

All units equipped with truck-level shipping (accommodates 53' trailer)

5-buildings total, units ranging from 2,500 sf up to over 30,000 sf

75% of units possess 20' clear height

Ample onsite parking

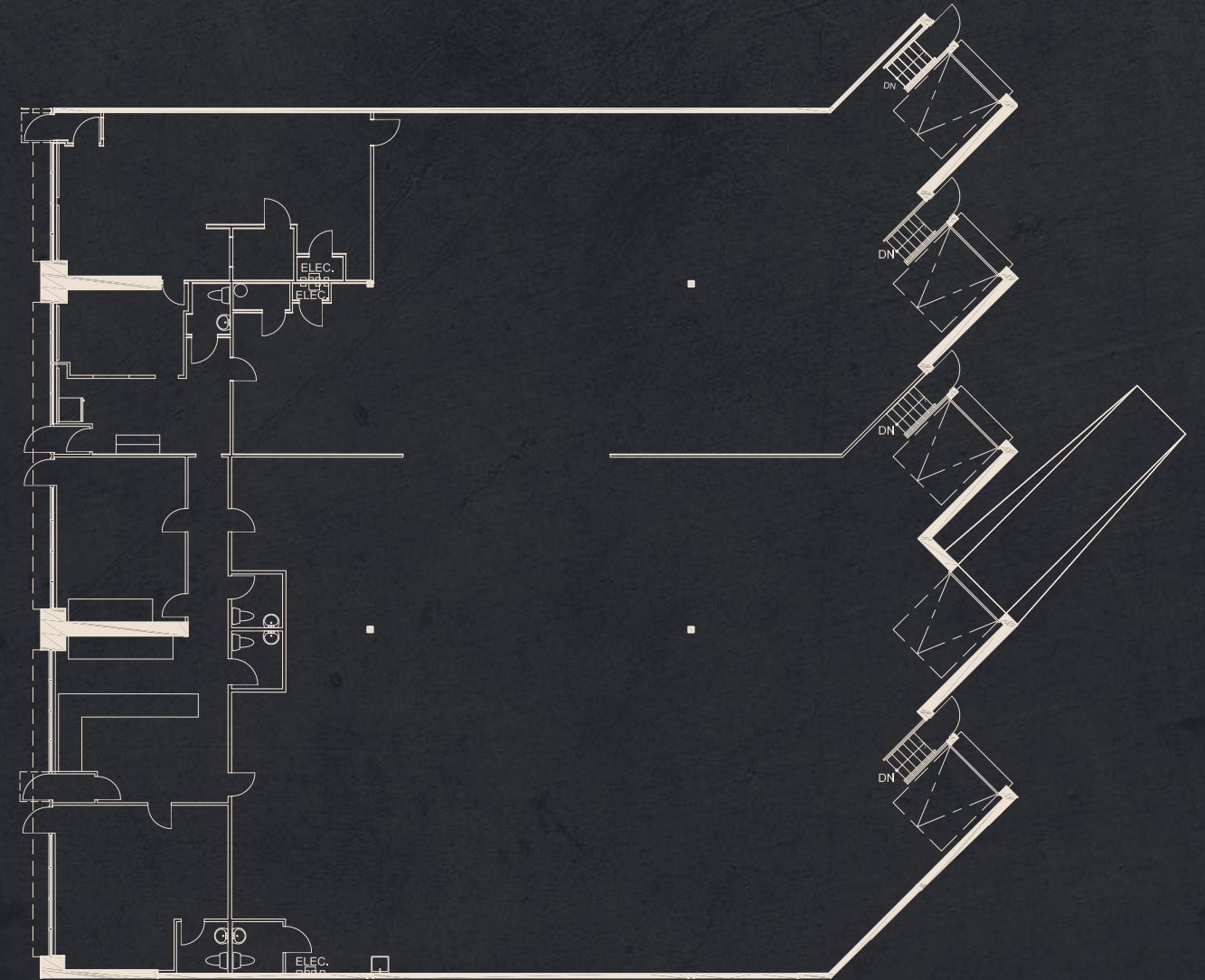
Business Centre surrounded by amenities



6625

6625 TOMKEN ROAD

UNIT 12-16



SIZE
11,083 SF

OFFICE AREA
2,660 SF

NET RENT
\$16.95 PSF

ADDITIONAL RENT
\$5.43 PSF

CLEAR HEIGHT
20'

SHIPPING
4 TL | 1 DI

AVAILABLE
OCTOBER 1, 2026

*Add. Rent not inclusive of 15% Management Fee





Pure Industrial is one of Canada's leading providers of industrial real estate. With offices in Toronto, Montreal, Quebec City, and Vancouver and top tier properties across the country, we believe in the power of vision and the strength of partnership.

We're not just providing industrial real estate; we are laying the foundation for your business to thrive and are committed to being your partner in growth. We offer a

portfolio of more than 42M square feet of prime locations across Canada, ranging from small warehouses to large industrial developments, and diligently serve more than 1,400 customers every day.

Our dedicated, customer-focused team is here to build lasting relationships, deliver highly responsive, personalized service, and keep your supply chain seamless, from the first mile to the last.



For More Information, Please Contact:

RORY MACNEIL*

Associate Vice President

289 221 0356

Rory.macneil@cushwake.com

AARON ENRIQUEZ*

Associate Vice President

905 808 6070

Aaron.enriquez@cushwake.com

JESSE MICAK**

Vice President

647 500 5748

Jesse.micak@cushwake.com

SUMIR DHILLON*

Senior Associate

647 919 7223

Sumir.dhillon@cushwake.com