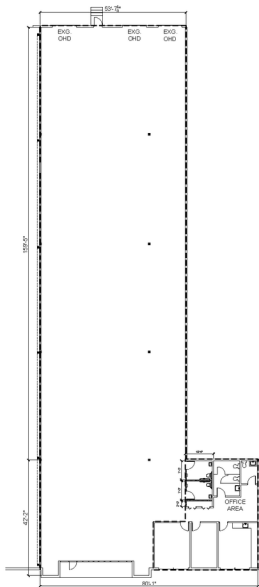




AVAILABLE OCTOBER 1, 2026

Total Available	11,852 SF
Office Area	±1,302 SF
Clear Height	24'
Dock Doors	3 Dock High (9'x10')
Column Spacing	40' x 40'
Fire Protection	ESFR



FOR LEASE

±11,852 SF

- I-77 Frontage
- Excellent Access to I-77 & I-485
- Close Proximity to CLT-Douglas International Airport