

For Lease



Office in prime Summerville location near I-26

Size	Rate	Lease Type	Available
1,252 sf	\$2,300/mo	NNN	Now

Free-standing office/retail in Summerville. Zoned Neighborhood Mixed-Use, the property is well-suited for professional services, offices, small shops, and select retail uses. Its location offers convenient access and is within walking distance of surrounding neighborhoods.

Get more information

Taylor Sekanovich

Vice President

+1 843 812 8407

taylor.sekanovich@avisonyoung.com

avisonyoung.com



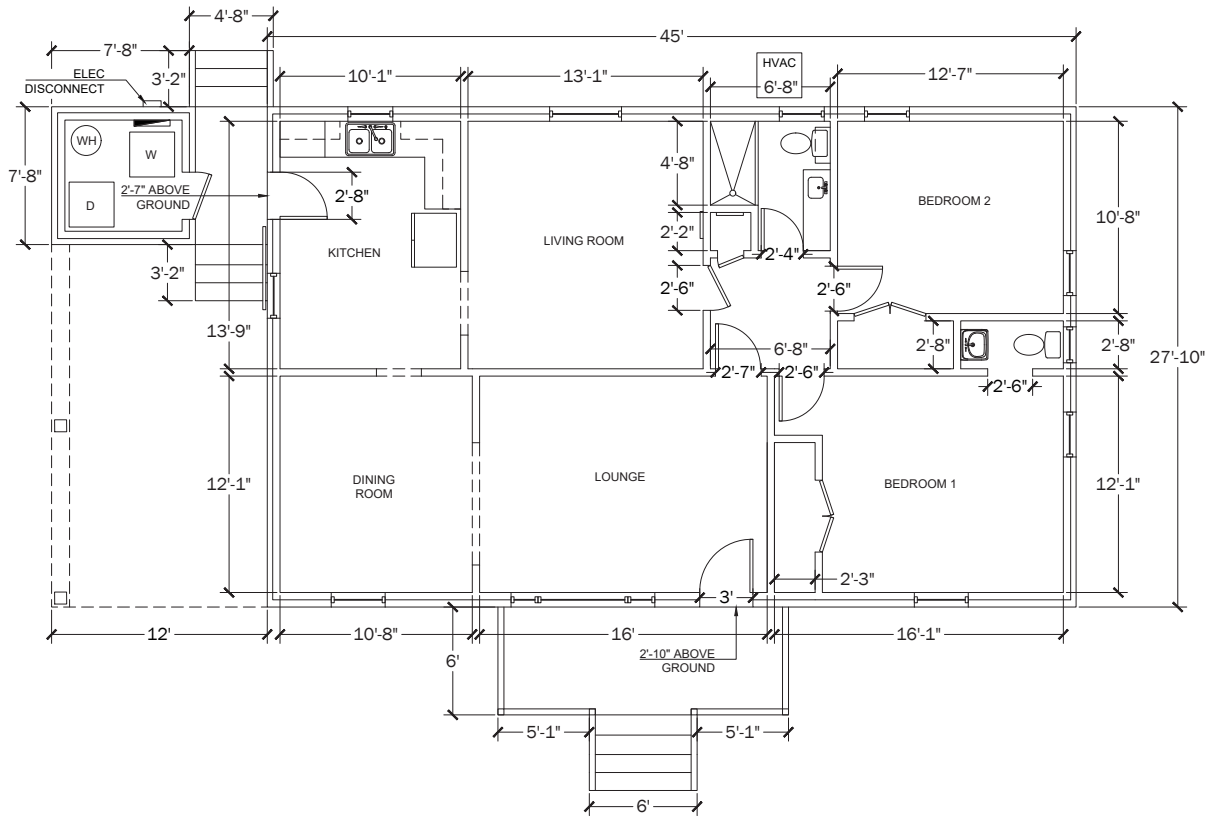
Property information

TMS	130-15-12-001
Municipality	Town of Summerville
County	Dorchester County
Zoning	N-MX_SV
Year built	1960

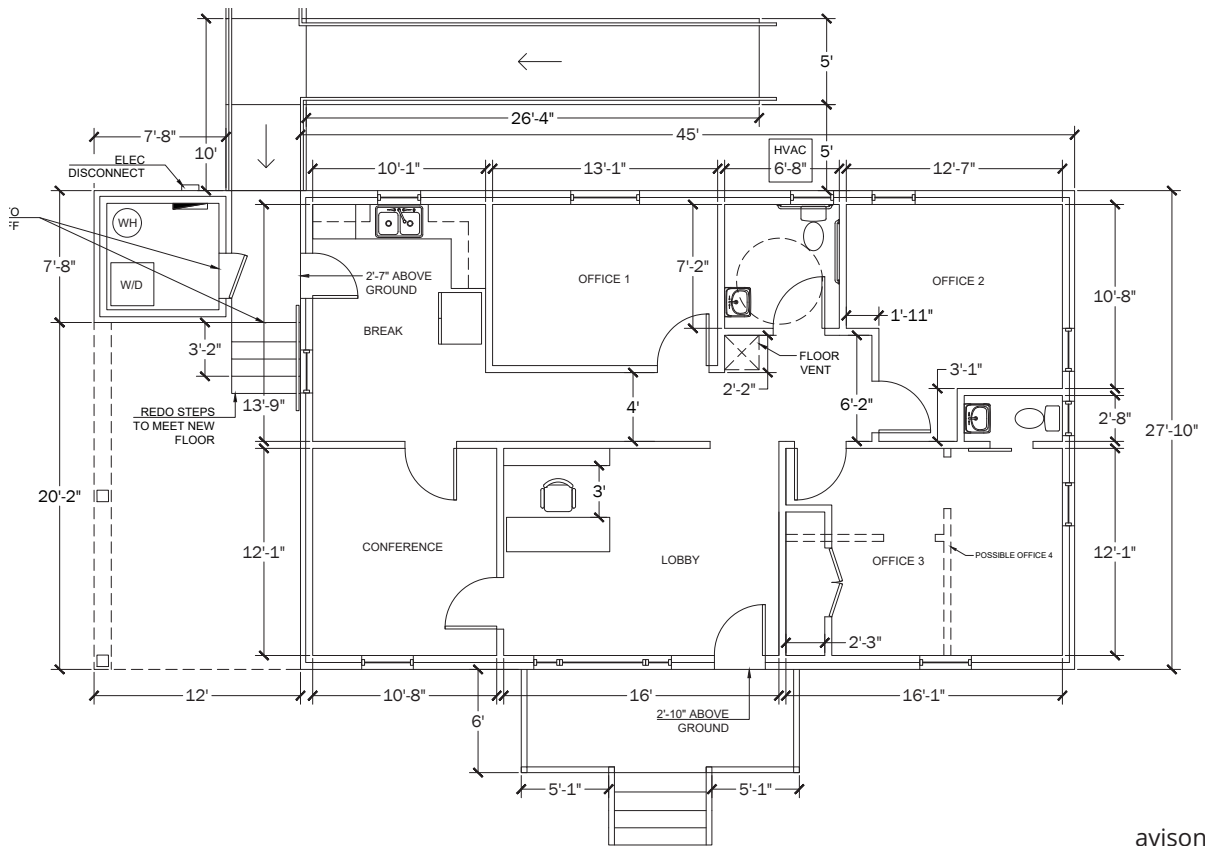
Demographics

Drive Time	1 mile	3 miles	5 miles
Total population	7,525	44,985	126,969
Total businesses	1,058	2,340	4,371
Median age	40.7	39.4	38.0
Median HH income	\$71,538	\$79,167	\$79,981

Current floorplan



Proposed floorplan





For more information:

Taylor Sekanovich
Vice President
+1 843 812 8407
taylor.sekanovich@avisonyoung.com

