



HARTFORD CITY INDUSTRIAL CENTER

1615 W. McDonald Street, Hartford City, IN 47348

Property Highlights

- 117,454 SF industrial facility on 13.33 acres.
- 7 semi docks, 3 drive-in overhead doors (12'x16'), and an in-place 10-ton overhead crane.
- I-2 zoning in an established industrial corridor; neighbors include Mayco International and BRC Rubber Group.
- Fully sprinklered with 6" concrete slab, 40-spot concrete parking, 9 miles to interstate; renovated 2026 and available now.



Max Nuevo
626-345-8634
Max@alliedcomre.com



Dave Horacek
260-760-1988
Dave@alliedcomre.com

6059 Innovation Blvd
Fort Wayne, IN
260-424-0210

Alliedcommercial.co

BUILDING & SALE INFORMATION

Price: \$8,000,000

Square Foot: 117,454 SF

Price PSF: \$68.11/SF

Availability: Now

Year Built: 1990

Year Renovated: 2026

of Stories: 1

Construction Type: Steel Frame & Mortar

Exterior Type: Insulated Sheet Metal

Roof: Standing Seam Metal

Heating: Gas Fired Rooftop

A/C: 4 Units

Lighting : T-8 Metal Halide

Ceiling Height: 21' - 32'

Sprinkler: Yes

Restrooms: 6

Flooring Type: Concrete Slab (6")

Property Type: Industrial

Address: 1615 W. McDonald Street,
Hartford City, IN 47348

County: Blackford County

Township: Licking

Neighboring Tenants: Mayco International, BRC
Rubber Group, & Petosky
Plastics

Parcel Number(s): 05-03-10-600-008.001-006

Acreage: 13.33 Acres

Zoning: I-2

Proximity to Interstate: 9 Miles

Parking Surface: Concrete

Parking Spots: 40

Access: Direct from W. McDonald Street

**Electric
(Amps/Volts/Phase):** 2,500 Amps, 480/277V, 3-
Phase

Water: Hartford City Works

Sewer: Hartford City Works

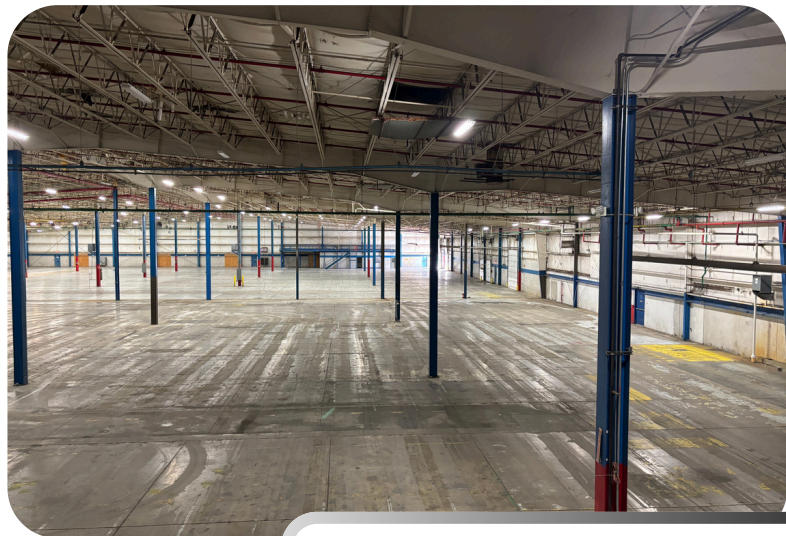
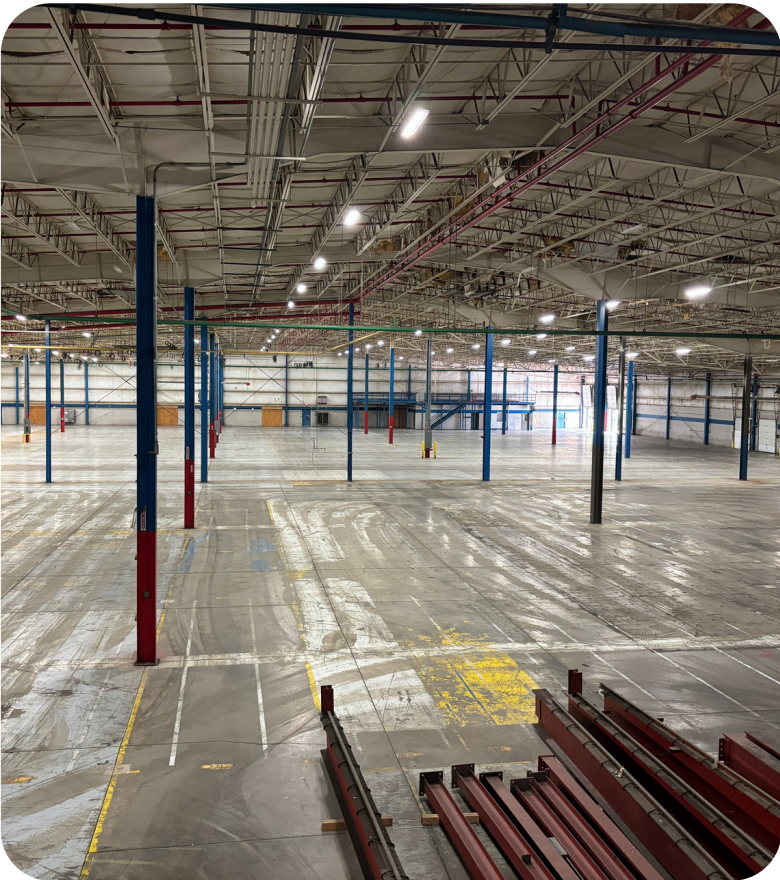
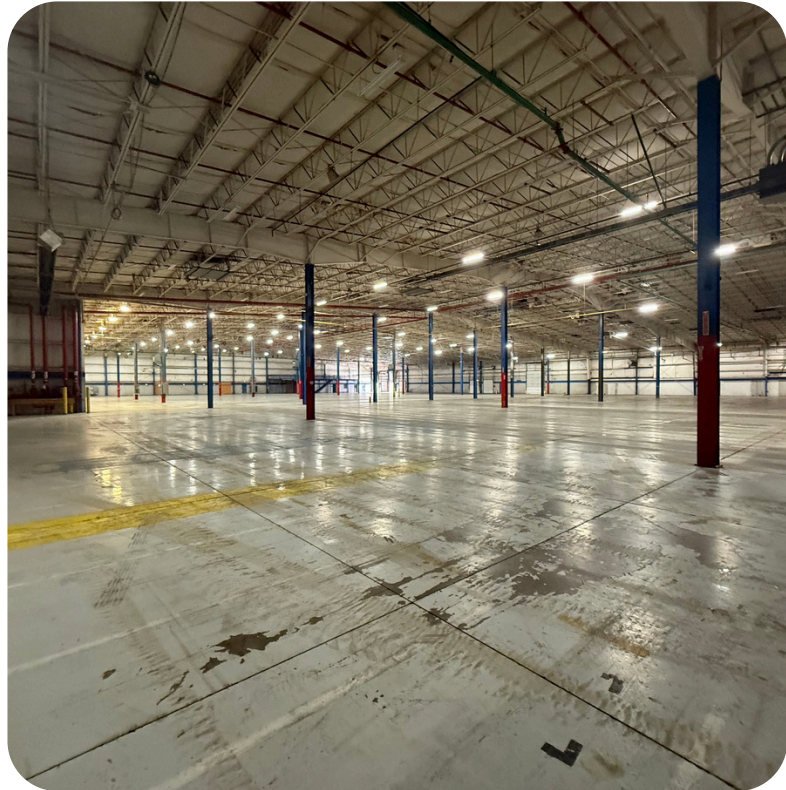
Gas: Vectren

Electric Provider: AEP

Max Nuevo
626-345-8634
Max@alliedcomre.com

Dave Horacek
260-760-1988
Dave@alliedcomre.com





Max Nuevo
626-345-8634
Max@alliedcomre.com

Dave Horacek
260-760-1988
Dave@alliedcomre.com

Allied
COMMERCIAL
BROKERAGE | PROPERTY MANAGEMENT | DEVELOPMENT

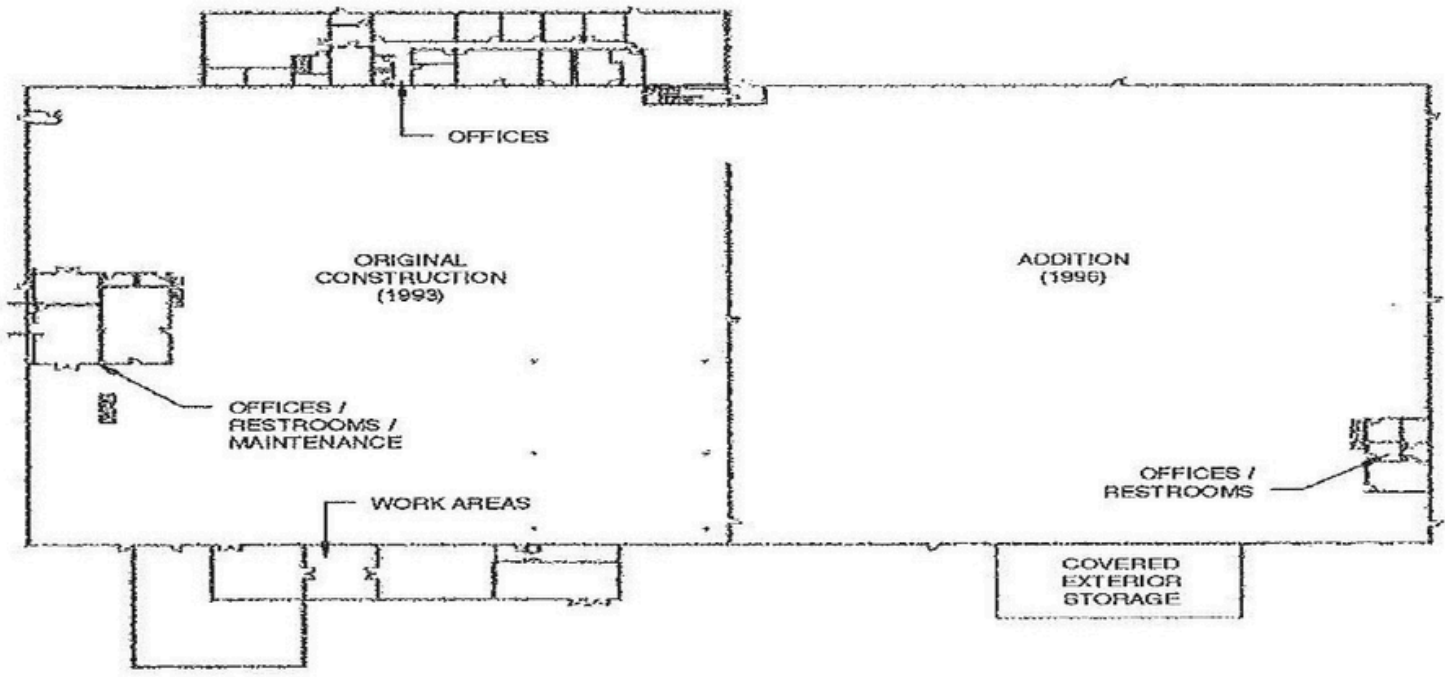
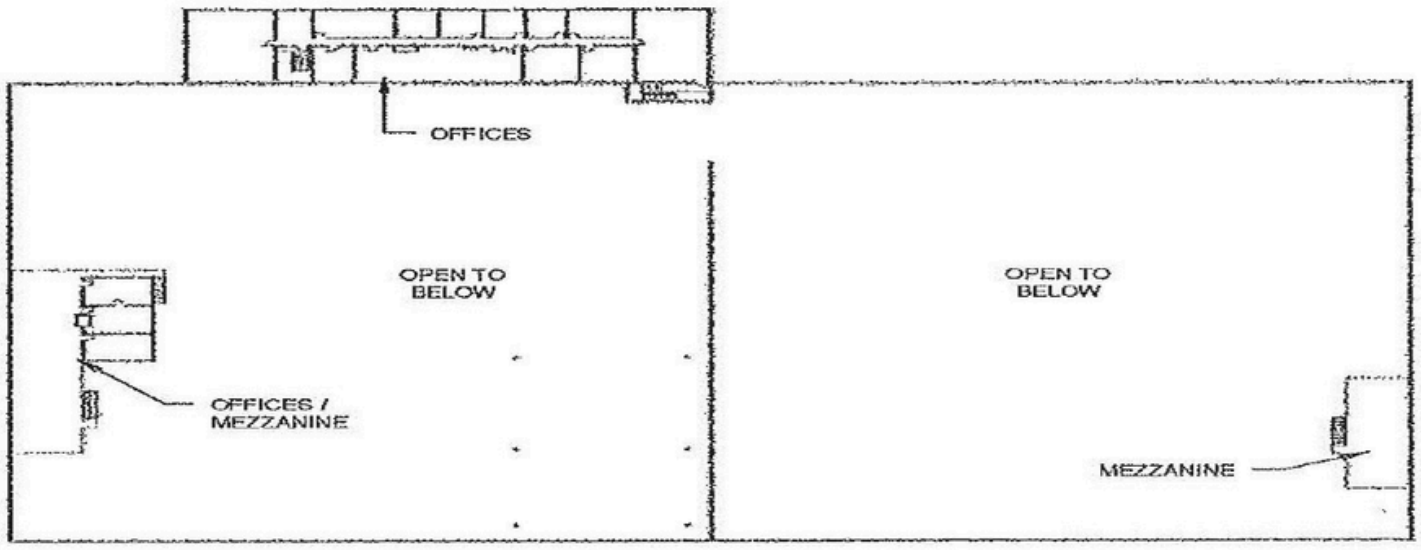


Max Nuevo
626-345-8634
Max@alliedcomre.com

Dave Horacek
260-760-1988
Dave@alliedcomre.com

Allied
COMMERCIAL
BROKERAGE | PROPERTY MANAGEMENT | DEVELOPMENT

FLOOR PLANS



Max Nuevo
626-345-8634
Max@alliedcomre.com

Dave Horacek
260-760-1988
Dave@alliedcomre.com



NEARBY BUSINESSES



Tru Form Steel & Wire

BRC Rubber Group



Petoskey Plastics



Max Nuevo
626-345-8634
Max@alliedcomre.com



Dave Horacek
260-760-1988
Dave@alliedcomre.com

6059 Innovation Blvd
Fort Wayne, IN
260-424-0210

Alliedcommercial.co