

10,276 SF PRIME OFFICE
FOR SUBLEASE

10003 110 Avenue
Fort St. John (Zone 60)
BC, V2J 6M7

Peterson



THE PREMISES

AVAILABILITY

Up to 10,276 SF of Class A office space available for sublease on the 2nd and 4th floor of the Frances Work Beaton office building.

LOCATION

The premises is centrally located on the corner of 110 Avenue And 100 Street, within walking distance to City Hall, a variety of food, beverage and retail options, and financial and professional services.

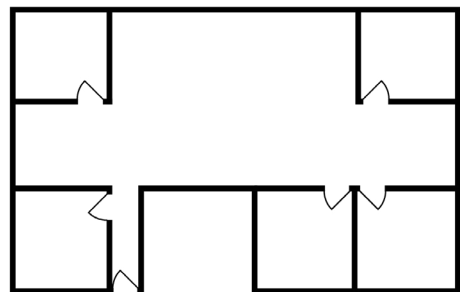
SUITE HIGHLIGHTS

YEAR BUILT	1991
AREA	10,276 SF
ADDRESS	10003 110 Avenue Fort St. John, V2J 6M7
AVAILABLE	Immediately
RATES	Call for rates
ZONING	C-3
BUILDING FEATURES	Fob System 2 Elevators



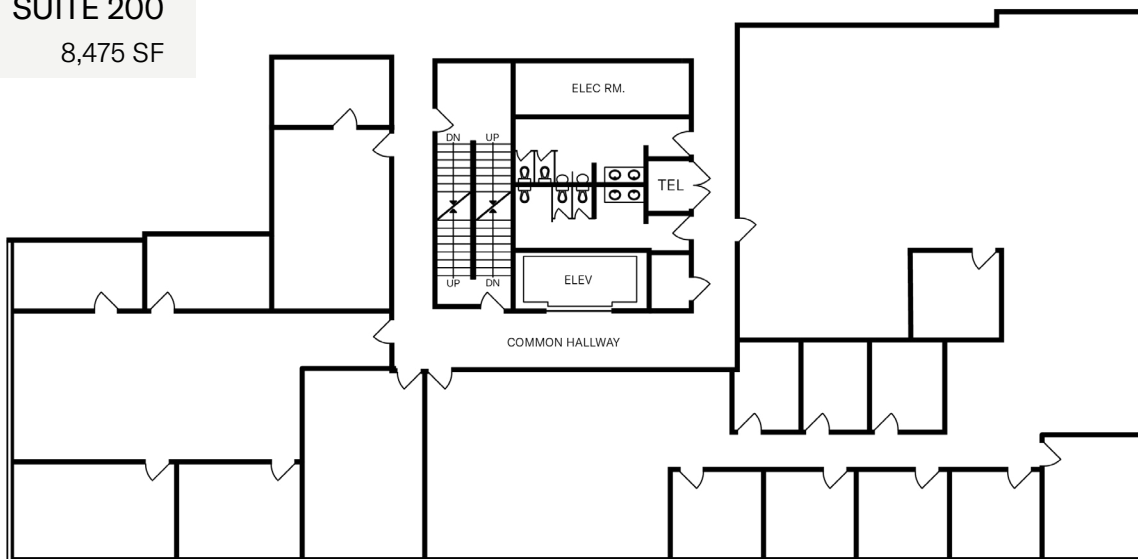
FRANCIS WORK BEATON BUILDING

FLOOR PLANS



SUITE 401
1,801 SF

SUITE 200
8,475 SF



CONTACT US

PATTY WILLETTS
Director, Leasing



D 604 699 5203
O 604 688 4885



pattyw@petersonbc.com



Petersonbc.com

Peterson