



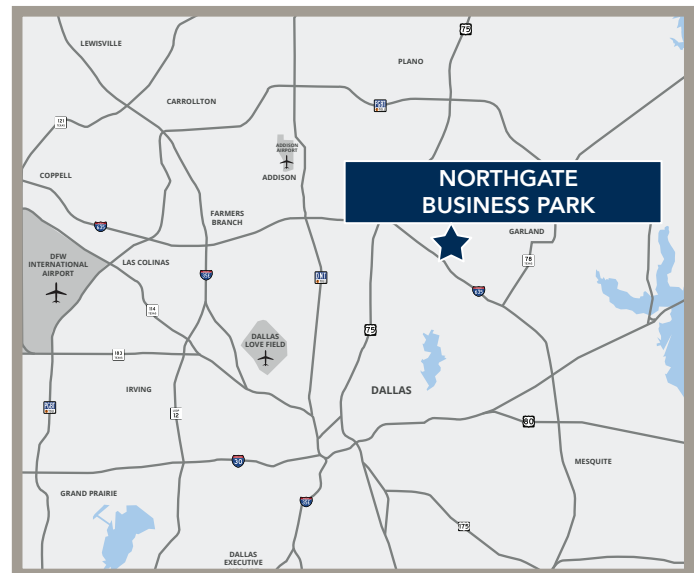
**2,400 SF**  
AVAILABLE FOR LEASE

## 9718 SKILLMAN STREET

DALLAS, TEXAS 75243

### PROPERTY HIGHLIGHTS

- Total Building SF: 61,629 SF
- Vacancy SF: 2,400 SF
- Clear Height: 16'
- Parking Ratio: 1.22/1,000 SF
- Year of Construction: 1980



### CONTACTS

Weston Porter | 214.442.8933 | [wporter@holtlunsford.com](mailto:wporter@holtlunsford.com)  
Danny Phillips | 972.585.5102 | [dphillips@holtlunsford.com](mailto:dphillips@holtlunsford.com)



This information is deemed reliable, however Holt Lunsford Commercial makes no guarantees, warranties or representation as to the completeness or accuracy thereof.

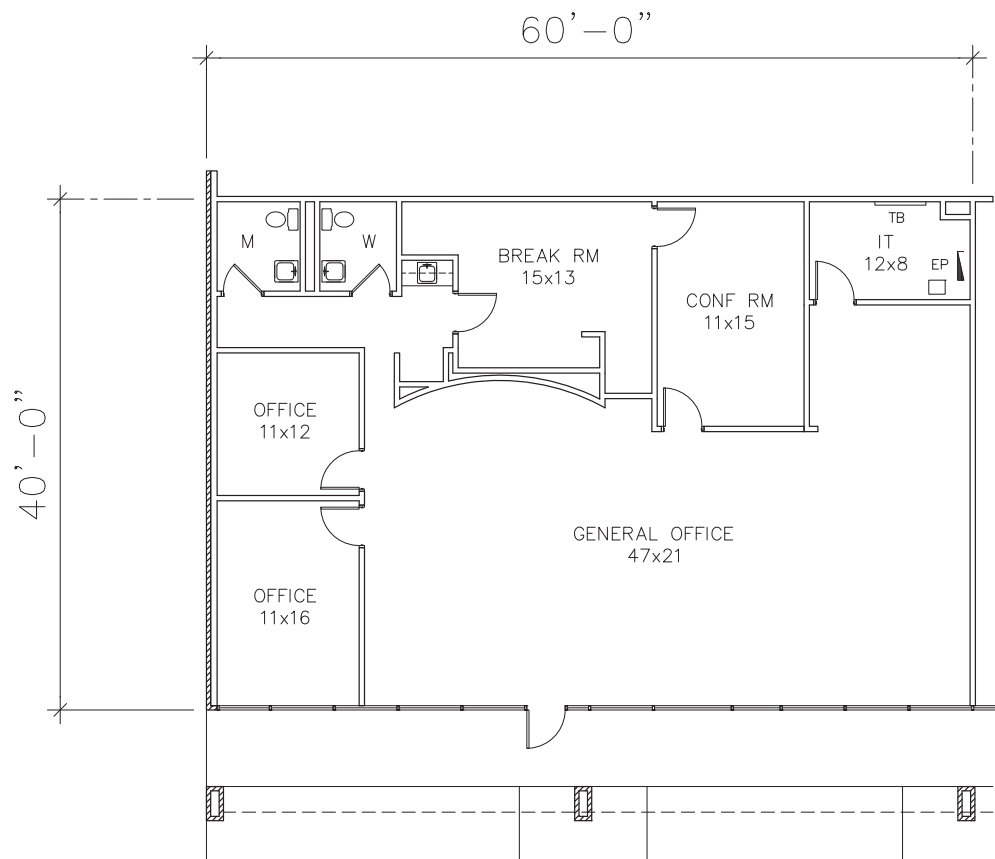
# 9718 SKILLMAN STREET

DALLAS, TEXAS 75243

## FLOOR PLAN

### SUITE INFORMATION

- Vacancy SF: 2,400 SF
- 100% Office
- Forest Lane Frontage
- Close proximity to 635



## CONTACTS

Weston Porter | 214.442.8933 | [wporter@holtlunsford.com](mailto:wporter@holtlunsford.com)  
Danny Phillips | 972.585.5102 | [dphillips@holtlunsford.com](mailto:dphillips@holtlunsford.com)



