

±13,990 SF Available for Lease

Downey Business Center

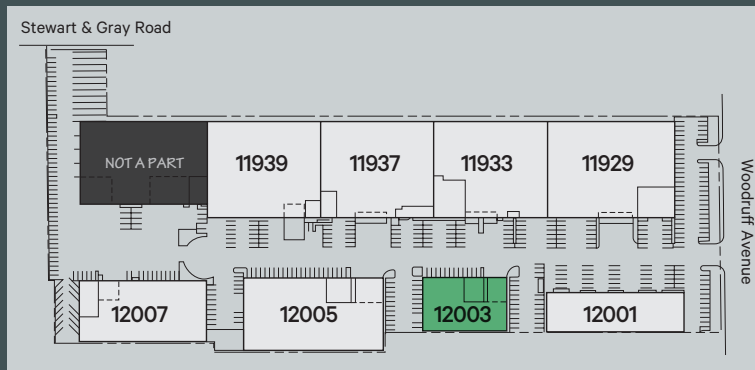
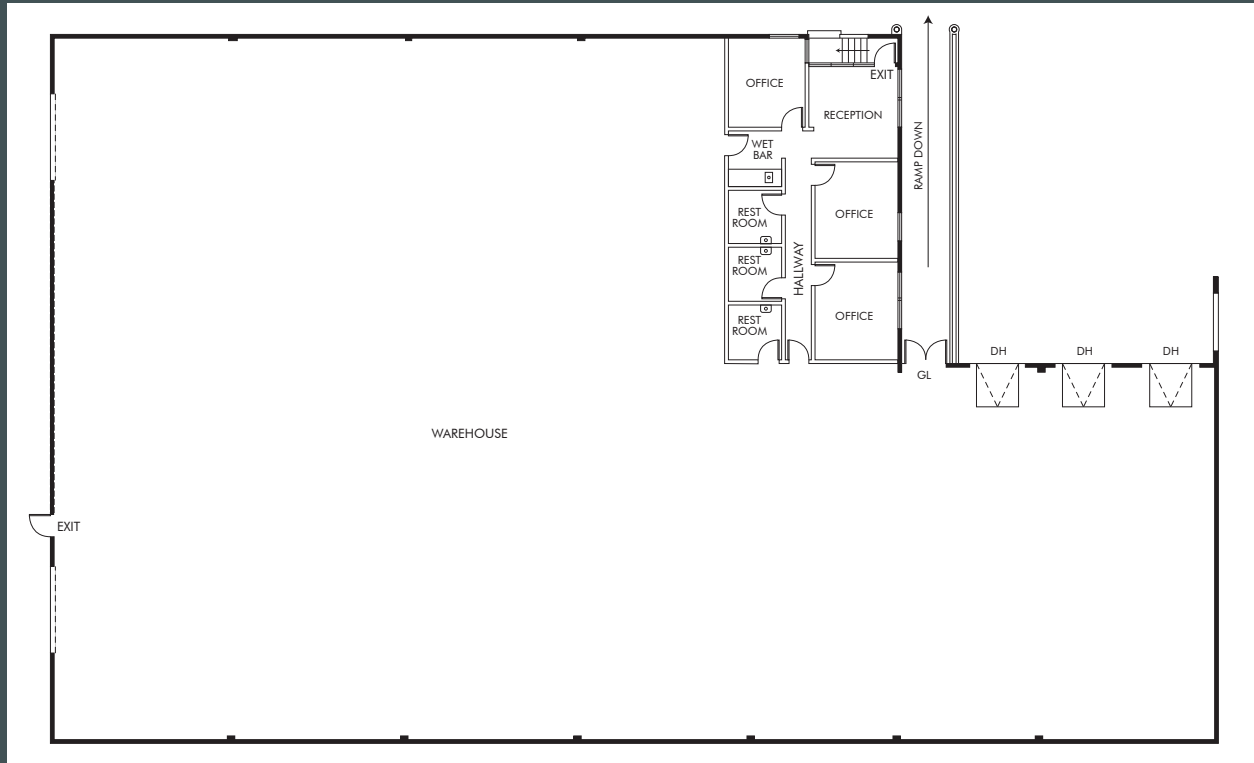
12003 Woodruff Avenue, Downey, CA

Property Features

- + ±13,990 SF Total Building SF
- + ±1,080 SF Office
- + 24' Clear Height
- + One (1) Grade Level Door
- + Three (3) Dock High Doors
- + 14 Parking Spaces (1.0:1,000)
- + 400 Amps
- + Immediate Access to 605, 5 and 105 Freeways



Floor Plan



Contact Us

Ryan Peterson

Senior Vice President

+1 714 371 9212

ryan.peterson@cbre.com

Lic. 01336025

Brad Bierbaum

Senior Vice President

+1 714 371 9210

brad.bierbaum@cbre.com

Lic. 00996170

© 2026 CBRE, Inc. All rights reserved. This information has been obtained from sources believed reliable, but has not been verified for accuracy or completeness. You should conduct a careful, independent investigation of the property and verify all information. Any reliance on this information is solely at your own risk. CBRE and the CBRE logo are service marks of CBRE, Inc. All other marks displayed on this document are the property of their respective owners, and the use of such logos does not imply any affiliation with or endorsement of CBRE. Photos herein are the property of their respective owners. Use of these images without the express written consent of the owner is prohibited.

N:\Team-Revere\Marketing - InDesign\Downey Business Center\Archived Artwork\12003WoodruffAve_Flyer_v03AK.indd