

888 W Ash St

San Diego, CA 92101

±2,100 SF



Property Highlights

- + Covered parking available
- + High quality finishes
- + Building signage potentially available
- + Furniture potentially available
- + Walking distance to Little Italy, Waterfront Park, USS Midway Museum and the Coronado Ferry.
- + Great visibility on the corner of Ash and Pacific Hwy
- + Access to an abundance of restaurants, breweries/wineries, retail, residential and transit.

+ Sublease through November 30, 2028

+ Asking Rate: \$4.25/SF + E&J

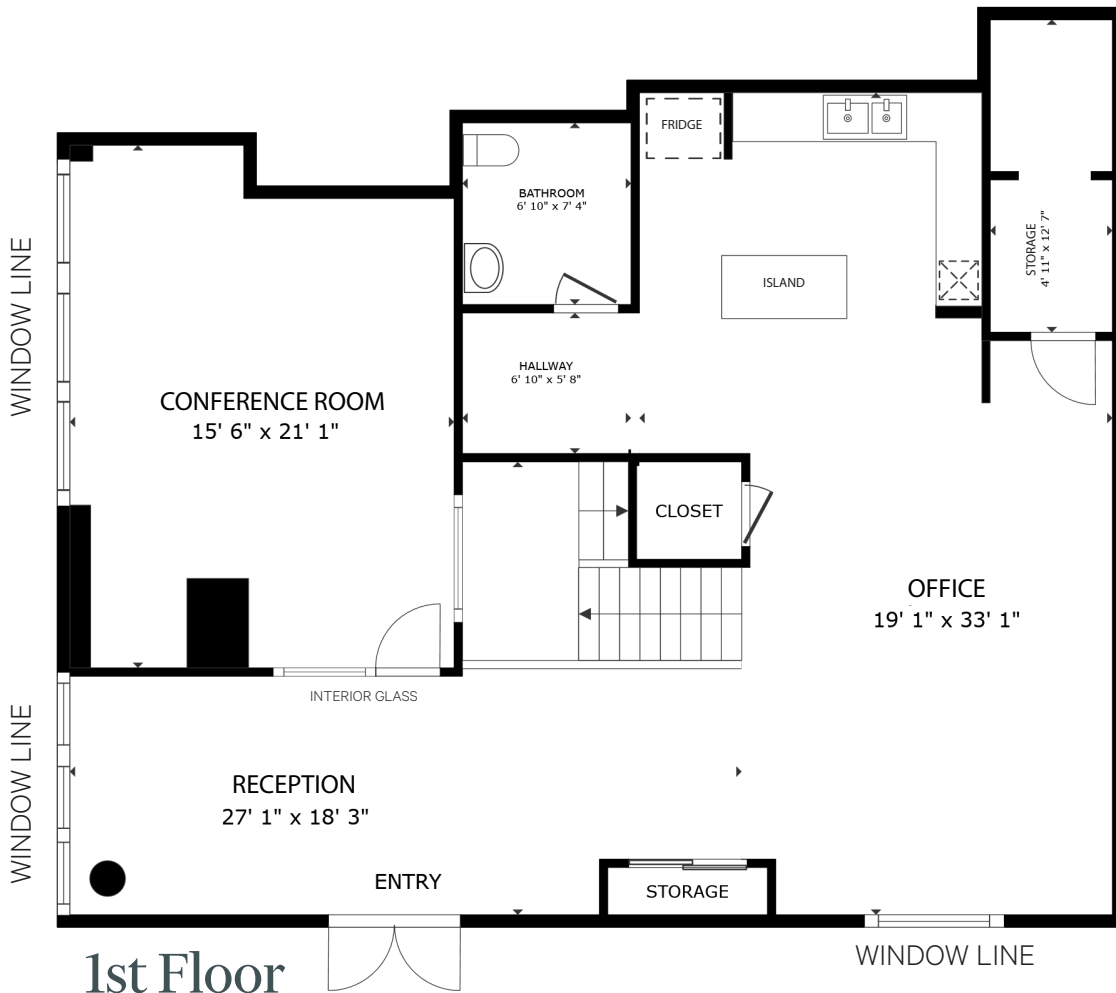


Floor plan

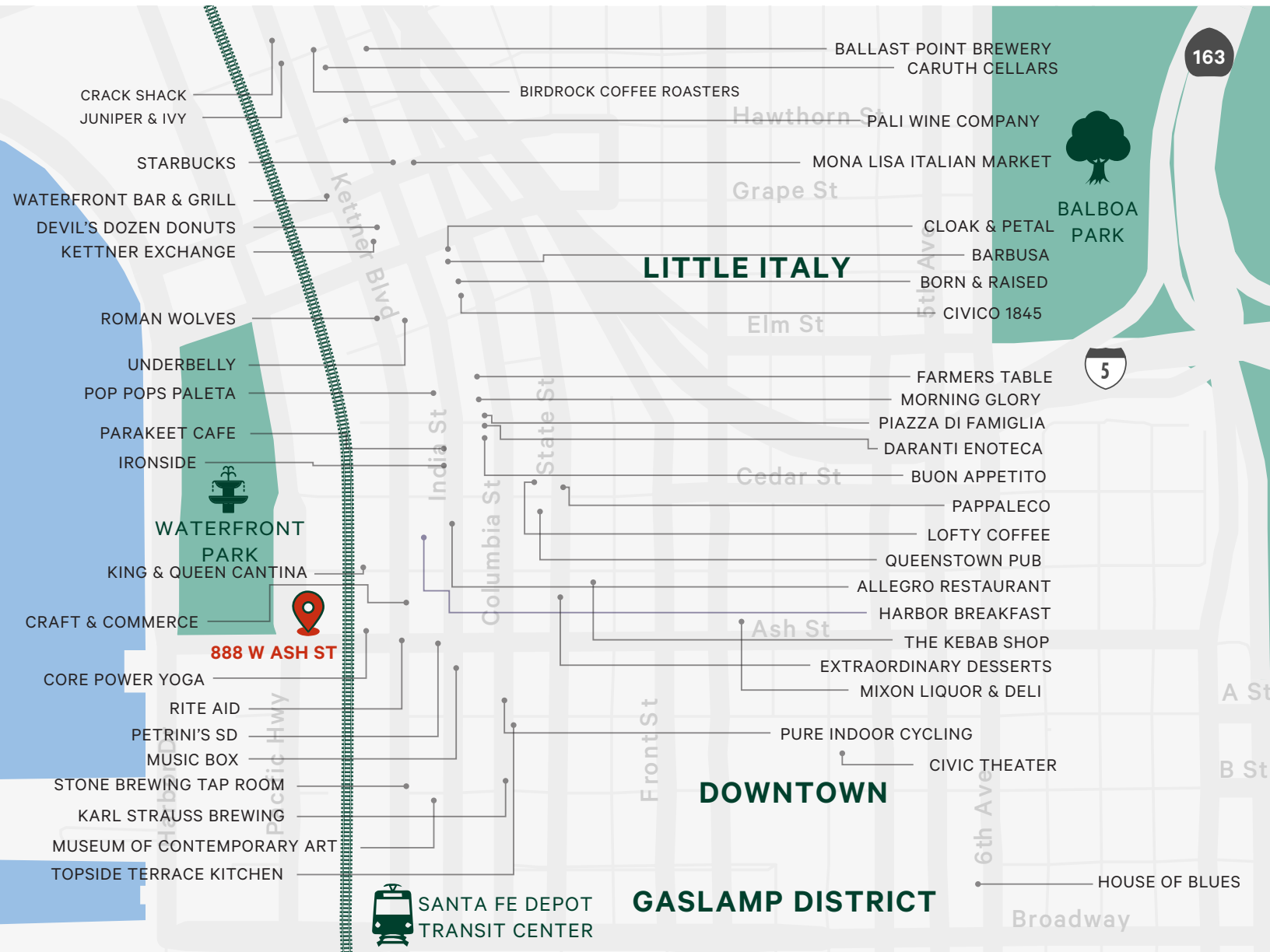
This professional suite features multiple private offices, a dedicated conference room, a welcoming reception area, and a spacious kitchenette with an island and ample storage. The space features high-quality finishes throughout, creating a polished and professional environment.

[VIEW SUITE](#)

2nd Floor



Amenity Map



Contact Us

Victoria Soto

Associate
+1 858 546 2675
victoria.soto@cbre.com
Lic. 02139648

Jeb Bakke

Senior Vice President
+1 858 546 4603
jeb.bakke@cbre.com
Lic. 00872363

© 2026 CBRE, Inc. All rights reserved. This information has been obtained from sources believed reliable, but has not been verified for accuracy or completeness. You should conduct a careful, independent investigation of the property and verify all information. Any reliance on this information is solely at your own risk. CBRE and the CBRE logo are service marks of CBRE, Inc. All other marks displayed on this document are the property of their respective owners, and the use of such logos does not imply any affiliation with or endorsement of CBRE. Photos herein are the property of their respective owners. Use of these images without the express written consent of the owner is prohibited.