

FOR LEASE

Shop Condos

2721 20th Ave S, Moorhead, MN 56560

MLS #23-783



PROPERTY DESCRIPTION:

Unit amenities consist of an office, restroom, utility sink, floor drain, LED lights, 14' garage door and 20' sidewalls. No additional parking available.

LEASE RATE:

\$9.50 PSF
Utilities paid by Tenant
Taxes, Insurance, Snow & Lawn paid by Landlord

AVAILABLE SPACE:

1,950 SF - 3,900 SF

SIDEWALL HEIGHTS:

F - 16'
H & I - 20'

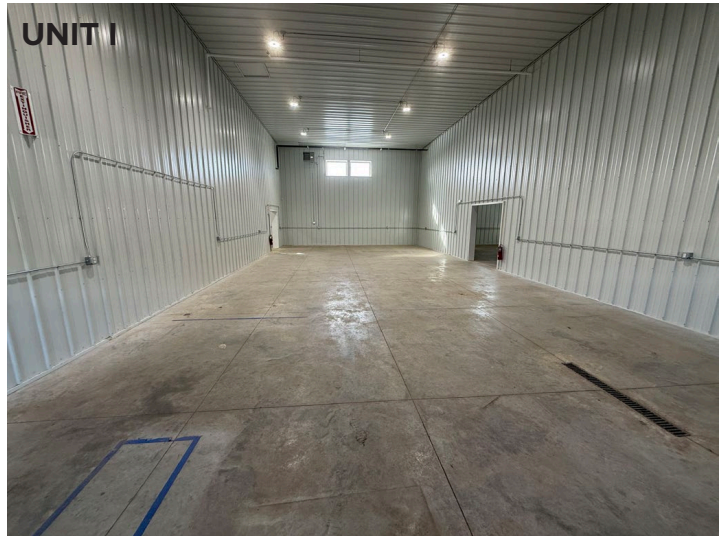
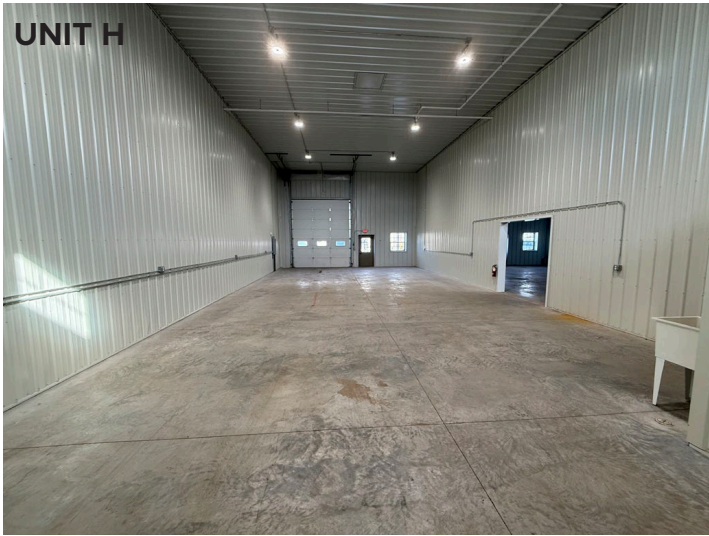


PROPERTY RESOURCES GROUP

www.PropertyResourcesGroup.com
4609 33rd Ave S. Suite 400, Fargo, ND 58104

JUSTIN GUSTOFSON,
CCIM, SIOR, REALTOR®
701-499-3875
justin@prgcommercial.com

DANE TOLLEFSON,
REALTOR®
701.499.3864
dane@prgcommercial.com



PROPERTY RESOURCES GROUP

www.PropertyResourcesGroup.com
4609 33rd Ave S. Suite 400, Fargo, ND 58104

JUSTIN GUSTOFSON,
CCIM, SIOR, REALTOR®
701-499-3875
justin@prgcommercial.com

DANE TOLLEFSON,
REALTOR®
701.499.3864
dane@prgcommercial.com

All information contained herein is believed to be true, but should be verified to the buyer's satisfaction in case of error, typographical or otherwise. All information is subject to change without further notice.