

# FOR LEASE

135 N State Street  
Zeeland, MI 49464

Nice commercial/office space available for lease on State Street in beautiful Downtown Zeeland just North of Washington Avenue. This 1,150 SF includes open space, private offices and conference room. Heavy traffic counts on State Street with high exposure. Perfect location for retail or office use!



**OFFICE/RETAIL**  
1,150 SF

[www.LakeshoreCommercial.com](http://www.LakeshoreCommercial.com)

44 East 8th Street, Suite 510 | Holland, MI 49423 | 616.394.4500

CALEB DRIESEN  
• DIR +1 616 355 3149  
• MOB +1 616 283 8205  
• [CALEB@LAKESHORECOMMERCIAL.COM](mailto:CALEB@LAKESHORECOMMERCIAL.COM)

TOM POSTMA  
• DIR +1 616 355 3145  
• MOB +1 616 283 2411  
• [TOM@LAKESHORECOMMERCIAL.COM](mailto:TOM@LAKESHORECOMMERCIAL.COM)

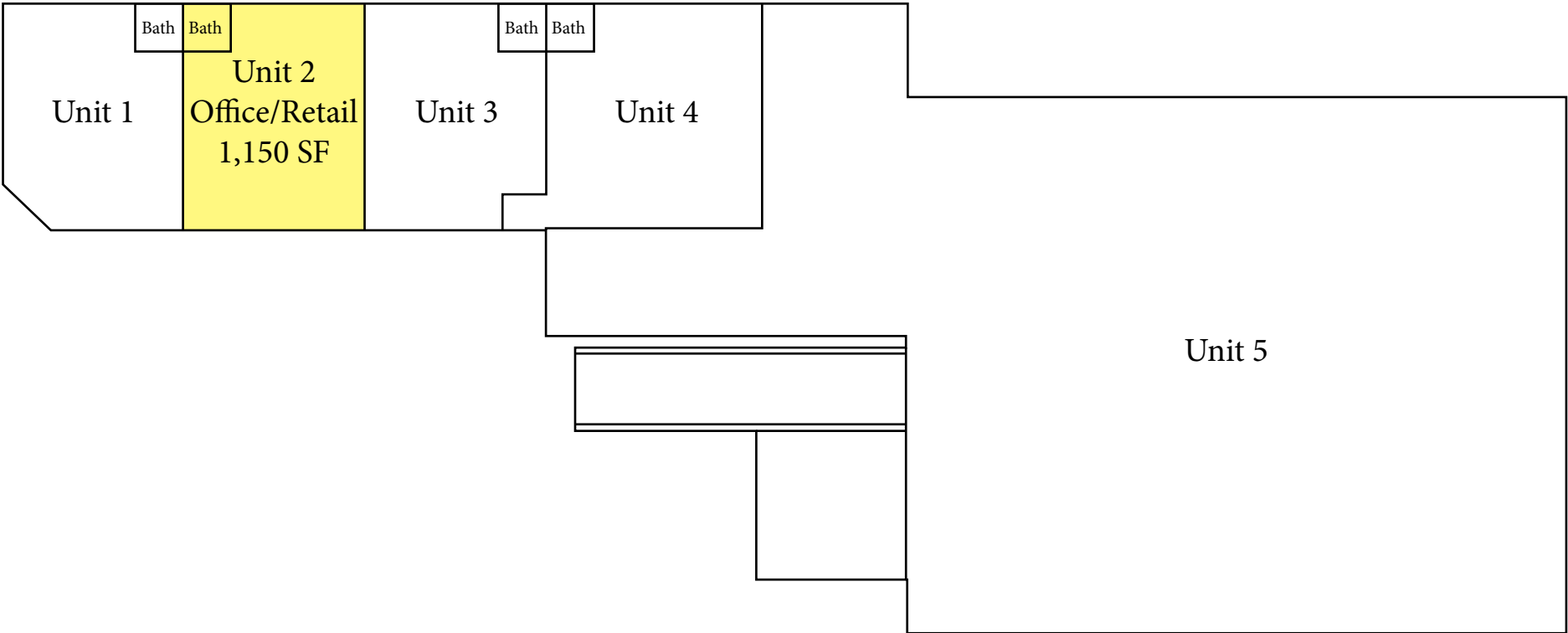


**LISTING INFORMATION**

Suite	2
Available SF	1,150 SF
Lease Rate/SF	\$16.65/SF + Utilities
Monthly Amount	\$1,500/ Month + Utilities
Lease Type	Plus Utilities
Terms	36-48 Months
Zoning	C-3
Taxing Authority	City of Zeeland
County	Ottawa

**BUILDING HIGHLIGHTS**

- Great location with high exposure & visibility
- On-site customer parking
- Great space for retail or office use
- Traffic count (96th): 10,951 cars
- Pylon signage available for great advertising



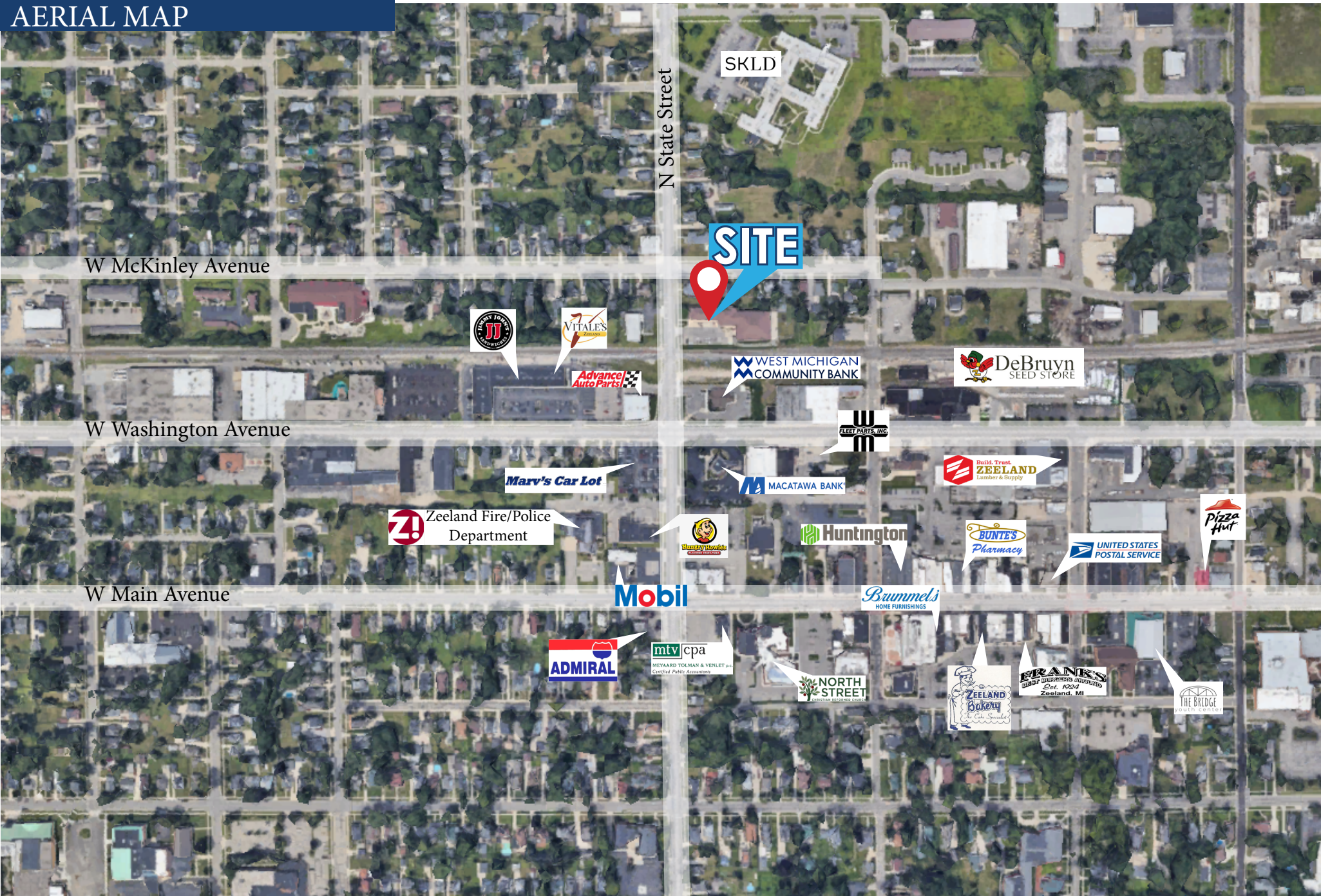
FOR LEASE · 135 N State Street · Zeeland, MI 49464



PHOTOS



**AERIAL MAP**



**YOUR PREMIER BROKER IN WEST MICHIGAN**



**CALEB DRISENGA**  
ADVISOR

DIRECT (+1) 616-355-3149  
CELL (+1) 616-283-8205  
CALEB@LAKESHORECOMMERCIAL.COM



**TOM POSTMA**  
PRINCIPAL

DIRECT (+1) 616-355-3145  
CELL (+1) 616-283-2411  
TOM@LAKESHORECOMMERCIAL.COM



**DREW DURHAM**  
PRINCIPAL

DIRECT (+1) 616-355-3148  
CELL (+1) 616-566-2039  
DREW@LAKESHORECOMMERCIAL.COM



**JASON DEWITT**  
PRINCIPAL

DIRECT (+1) 616-355-3156  
CELL (+1) 616-836-2856  
JASON@LAKESHORECOMMERCIAL.COM



**JIM EDEWAARD, CCIM**  
ADVISOR

DIRECT (+1) 616-355-3144  
CELL (+1) 616-403-6131  
JIM@LAKESHORECOMMERCIAL.COM



**KRIS DEPREE**  
PRINCIPAL

DIRECT (+1) 616-355-3141  
CELL (+1) 616-212-5576  
KRIS@LAKESHORECOMMERCIAL.COM



**MIKE NAGELKIRK**  
ADVISOR

DIRECT (+1) 616-355-3151  
CELL (+1) 616-836-1122  
MIKE@LAKESHORECOMMERCIAL.COM

Lakeshore Commercial Real Estate has over 100 years of experience in the industry. We have seen many changes and evolutions over the years, but our focus has always remained the same: to serve businesses in our community and help them achieve their success. We specialize in all aspects of commercial real estate, including sales, management, and leasing. We have a deep understanding of the local market and the unique needs of different businesses. We use our expertise to help our clients find the right property, negotiate the best deals, and manage their properties efficiently and effectively. We don't just have you covered on the Lakeshore. We have created excellent relationships with brokers outside of the Lakeshore area to ensure we are serving you best. We are committed to our clients and their success. We work closely with each client to understand their needs and goals, and we develop customized solutions to help them achieve those goals.