



CLASS A OFFICE CONDO FOR SALE



**9822 TAPESTRY PARK CIRCLE
UNITS 204-205
Jacksonville, FL 32246
5,103 SF**

Sale Price: \$1,500,000.00

**Garnett Commercial Real Estate, Inc.
904-855-8800
jgarnett@ccim.net • www.jackgarnett.com
A Licensed Real Estate Broker**

Disclaimer: Details herein are believed to be correct; however, it is subject to errors, omissions, price change or withdrawal without notice.



Property: 9822 Tapestry Park Circle
Units 204-205
Jacksonville, FL 32246

Space: 5,103 SF Class A Office Condo Unit

Year Built: 2009

Location: In Close Proximity to Tinsel Town and St. Johns Town Center Prominent Retail areas.

In Close Proximity to the Bulter Blvd. Interchange / Southside Blvd. Interchange providing access to I-95 and I-295.

An Easy Commute to High Demographic Multi-Family and Single-Family Neighborhoods via I-95, Butler Blvd., Philips Hwy/US Hwy. 1 and I-295.

Parking: 200 On-Site Parking Spaces

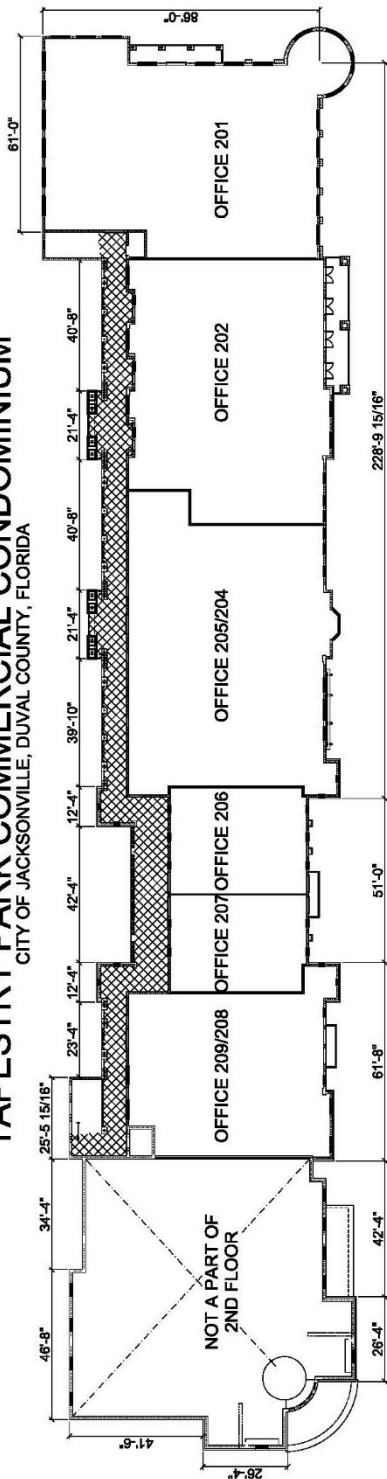
Signage: Second Floor Suite Entry Signage



Garnett Commercial Real Estate, Inc.
904-855-8800
jgarnett@ccim.net • www.jackgarnett.com
A Licensed Real Estate Broker

Disclaimer: Details herein are believed to be correct; however, it is subject to errors, omissions, price change or withdrawal without notice.

TAPESTRY PARK COMMERCIAL CONDOMINIUM
 CITY OF JACKSONVILLE, DUVAL COUNTY, FLORIDA



Condominium Units are Identified by number.
 — Denotes Boundaries of Individual Units.
 101 Denotes Typical Unit Numbers.

-  Denotes Common Elements
-  Denotes Limited Common Elements



EXHIBIT: B-1

BUILDING 2ND FLOOR
 NOTE: DIMENSIONS SHOWN HEREON ARE EXTERIOR MEASUREMENT



GARNETT
COMMERCIAL
REAL ESTATE, INC.




GARNETT
COMMERCIAL
REAL ESTATE, INC.





GARNETT
COMMERCIAL
REAL ESTATE, INC.



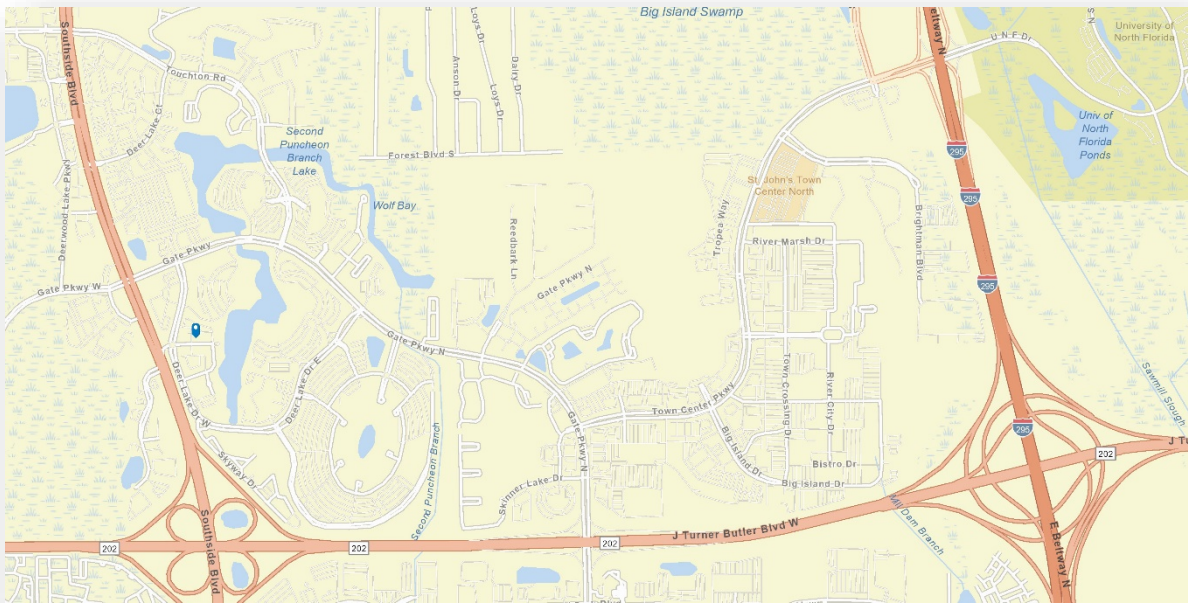
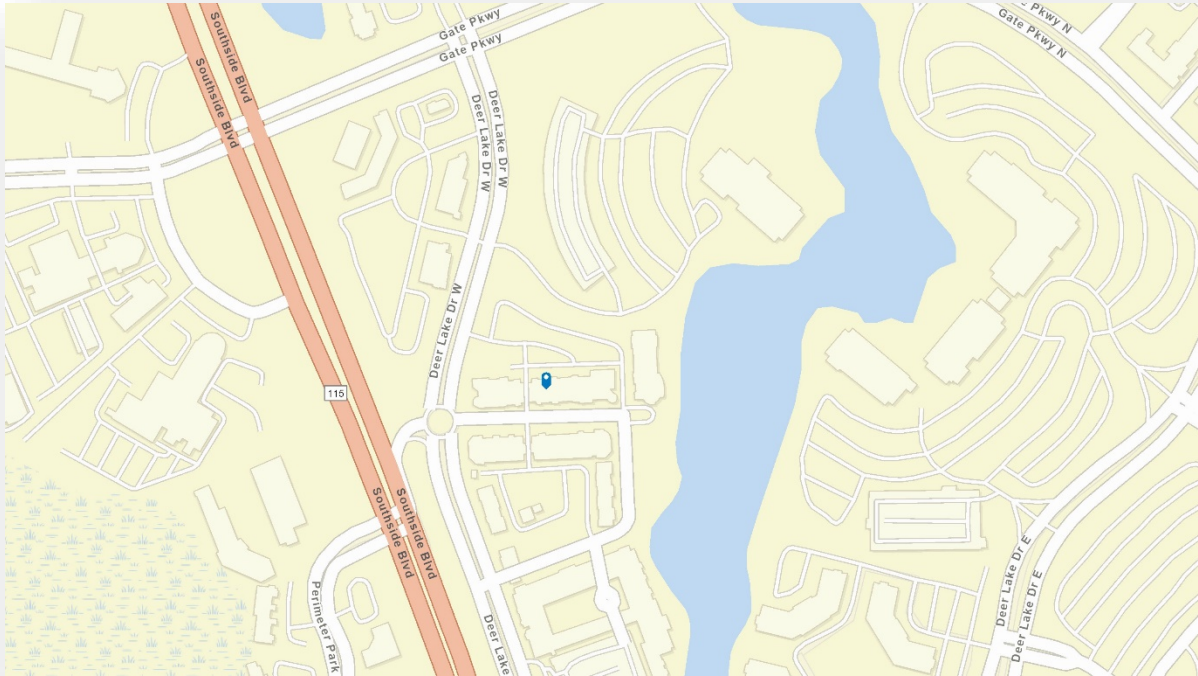


GARNETT
COMMERCIAL
REAL ESTATE, INC.





**GARNETT
COMMERCIAL**
REAL ESTATE, INC.



Garnett Commercial Real Estate, Inc.

904-855-8800

jgarnett@ccim.net • www.jackgarnett.com

A Licensed Real Estate Broker