



+ 5300

RIVERSIDE MARKETPLACE

TCHOUPITOULAS STREET, LA 70115



AVAILABLE SPACES: 3

SQ. FT. AVAILABLE: 8,694; 2,940; 2,800

WEB LINK: [HTTP://WWW.LACDB.COM/LISTING/3006183](http://www.lacdb.com/listing/3006183)

+ DEMOGRAPHICS

2019 DRIVE TIMES	TOTAL POPULATION	TOTAL HOUSEHOLDS	AVG. HH INCOME	MED. HH INCOME	PER CAPITA INCOME
5 MINS	45,602	19,704	\$119,377	\$68,560	\$51,916
10 MINS	121,263	52,117	\$83,670	\$53,191	\$36,621
15 MINS	194,131	86,291	\$77,625	\$51,337	\$34,963

DISCLAIMER: THIS SITE PLAN SHOULD ONLY SERVE AS AN APPROXIMATION OF THE CENTER'S LOCATION, LAYOUT, TENANTS, AND SQUARE FOOTAGE. NAMES, IMAGES, OR REPRESENTATIONS OF TENANTS, STREETS, OR PARKING SPACES SHALL NOT BE CONSIDERED A WARRANTY THAT THESE ELEMENTS ARE ACCURATE OR WILL CONTINUE TO EXIST. THE USE OF DEMOGRAPHICS ARE FOR ILLUSTRATIVE PURPOSES ONLY AND SHALL NOT ACT AS A WARRANTY OF THEIR ACCURACY.

L+A RETAIL

CONTACT:
JOHN MOSS

1200 S. CLEARVIEW PKWY,
STE. 1166
NEW ORLEANS, LA 70123



L+A RETAIL LICENSED BY LREC

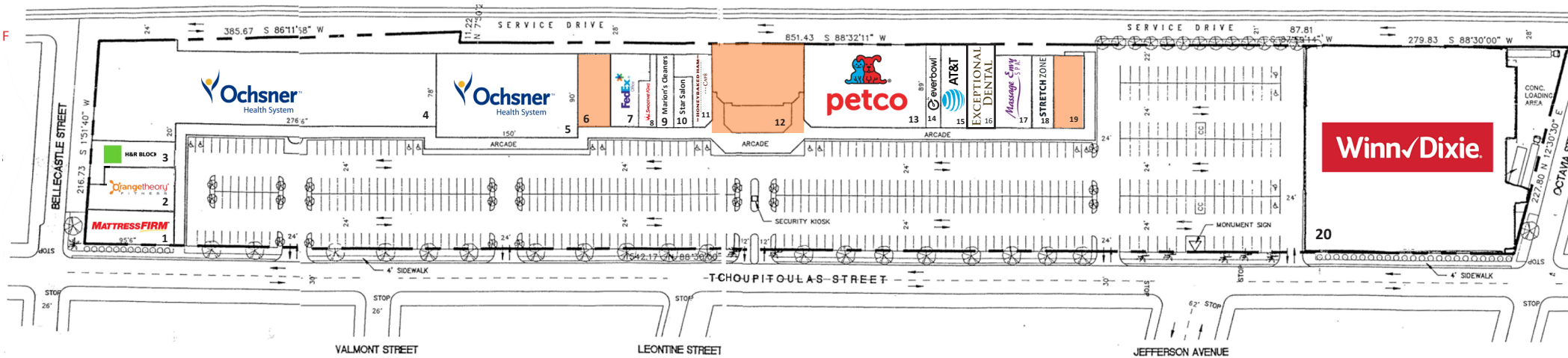
T 504+733+1212 WWW.LARETAIL.COM



+ 5300

RIVERSIDE MARKETPLACE

TCHOUPITOULAS STREET, LA 70115



TENANT

1 MATTRESS FIRM	6 AVAILABLE (2,940 sq. ft.)	11 HONEYBAKED HAM CAFE	16 EXCEPTIONAL DENTAL
2 ORANGE THEORY	7 FED EX	12 AVAILABLE (8,694 sq. ft.)	17 MASSAGE ENVY SPA
3 H&R BLOCK	8 SMOOTHIE KING	13 PETCO	18 STRETCH ZONE
4 OCHSNER	9 MARION'S CLEANERS	14 EVER BOWL	19 AVAILABLE (2,800 sq. ft.)
5 OCHSNER	10 STAR SALON	15 AT&T	20 WINN DIXIE

AVAILABILITY

L+A RETAIL

CONTACT:
JOHN MOSS

1200 S. CLEARVIEW PKWY,
STE. 1166
NEW ORLEANS, LA 70123



L+A RETAIL LICENSED BY LREC

T 504+733+1212 WWW.LARETAIL.COM



+ 5300

RIVERSIDE MARKETPLACE

TCHOUPITOULAS STREET, LA 70115



MSA: NEW ORLEANS

WEB LINK: <http://www.lacdb.com/listing/30061833>

L+A RETAIL

CONTACT:
JOHN MOSS

1200 S. CLEARVIEW PKWY,
STE. 1166
NEW ORLEANS, LA 70123

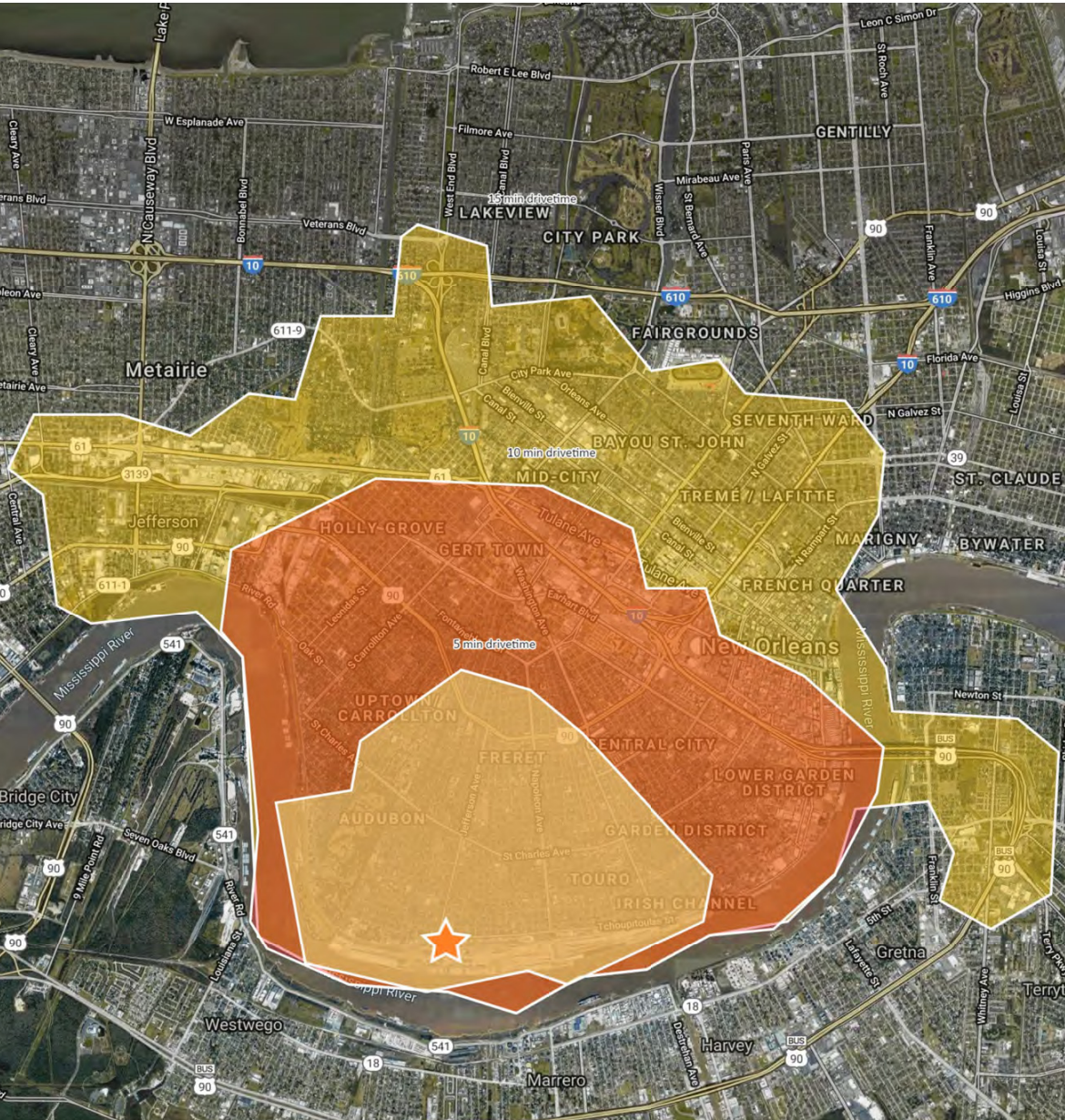
f i L+A RETAIL LICENSED BY LREC
T 504+733+1212 WWW.LARETAIL.COM



+ 5300

RIVERSIDE MARKETPLACE

TCHOUPITOULAS STREET, LA 70115



5300 Tchoupitoulas St New Orleans, LA 70115

	5 min drivetime	10 min drivetime	15 min drivetime	
POPULATION	2019 Estimated Population	45,602	121,263	194,131
	2024 Projected Population	45,147	121,697	194,665
	2010 Census Population	43,171	107,033	167,850
	2000 Census Population	50,363	135,554	216,459
	Projected Annual Growth 2019 to 2024	-0.2%	-	-
	Historical Annual Growth 2000 to 2019	-0.5%	-0.6%	-0.5%
HOUSEHOLDS	2019 Median Age	36.4	36.3	37.3
	2019 Estimated Households	19,704	52,117	86,291
	2024 Projected Households	19,793	53,096	87,863
	2010 Census Households	19,098	46,234	74,758
	2000 Census Households	21,957	54,701	89,893
	Projected Annual Growth 2019 to 2024	-	0.4%	0.4%
RACE AND ETHNICITY	Historical Annual Growth 2000 to 2019	-0.5%	-0.2%	-0.2%
	2019 Estimated White	63.2%	48.2%	47.6%
	2019 Estimated Black or African American	31.1%	45.4%	46.1%
	2019 Estimated Asian or Pacific Islander	2.2%	2.2%	1.9%
	2019 Estimated American Indian or Native Alaskan	0.2%	0.3%	0.3%
	2019 Estimated Other Races	3.2%	3.9%	4.0%
INCOME	2019 Estimated Hispanic	6.0%	6.6%	6.9%
	2019 Estimated Average Household Income	\$119,377	\$83,670	\$77,625
	2019 Estimated Median Household Income	\$68,560	\$53,191	\$51,337
	2019 Estimated Per Capita Income	\$51,916	\$36,621	\$34,963
EDUCATION (AGE 25+)	2019 Estimated Elementary (Grade Level 0 to 8)	2.0%	3.5%	3.7%
	2019 Estimated Some High School (Grade Level 9 to 11)	4.4%	8.5%	9.0%
	2019 Estimated High School Graduate	14.3%	18.4%	19.7%
	2019 Estimated Some College	14.7%	17.3%	18.5%
	2019 Estimated Associates Degree Only	3.0%	3.9%	4.1%
	2019 Estimated Bachelors Degree Only	30.7%	25.4%	24.4%
BUSINESS	2019 Estimated Graduate Degree	30.8%	23.0%	20.6%
	2019 Estimated Total Businesses	2,814	8,405	17,824
	2019 Estimated Total Employees	24,427	86,069	189,338
	2019 Estimated Employee Population per Business	8.7	10.2	10.6
	2019 Estimated Residential Population per Business	16.2	14.4	10.9

