

1877 FALL RIVER AVENUE

SEEKONK, MA

FOR LEASE | 6,000 SF INDUSTRIAL BUILDING ON 1.38 AC



STEPHEN FLYNN
MATTY DROUILLARD
VINCE GILCHRIST

781-917-7026
425-691-7881
508-530-2030

stephen.flynn@nrmk.com
matty.drouillard@nrmk.com
vincent.gilchrist@nrmk.com

NEWMARK



PROPERTY SUMMARY

PROPERTY DESCRIPTION

6,000 SF Industrial Building on 1.38 acres for Lease

PROPERTY HIGHLIGHTS

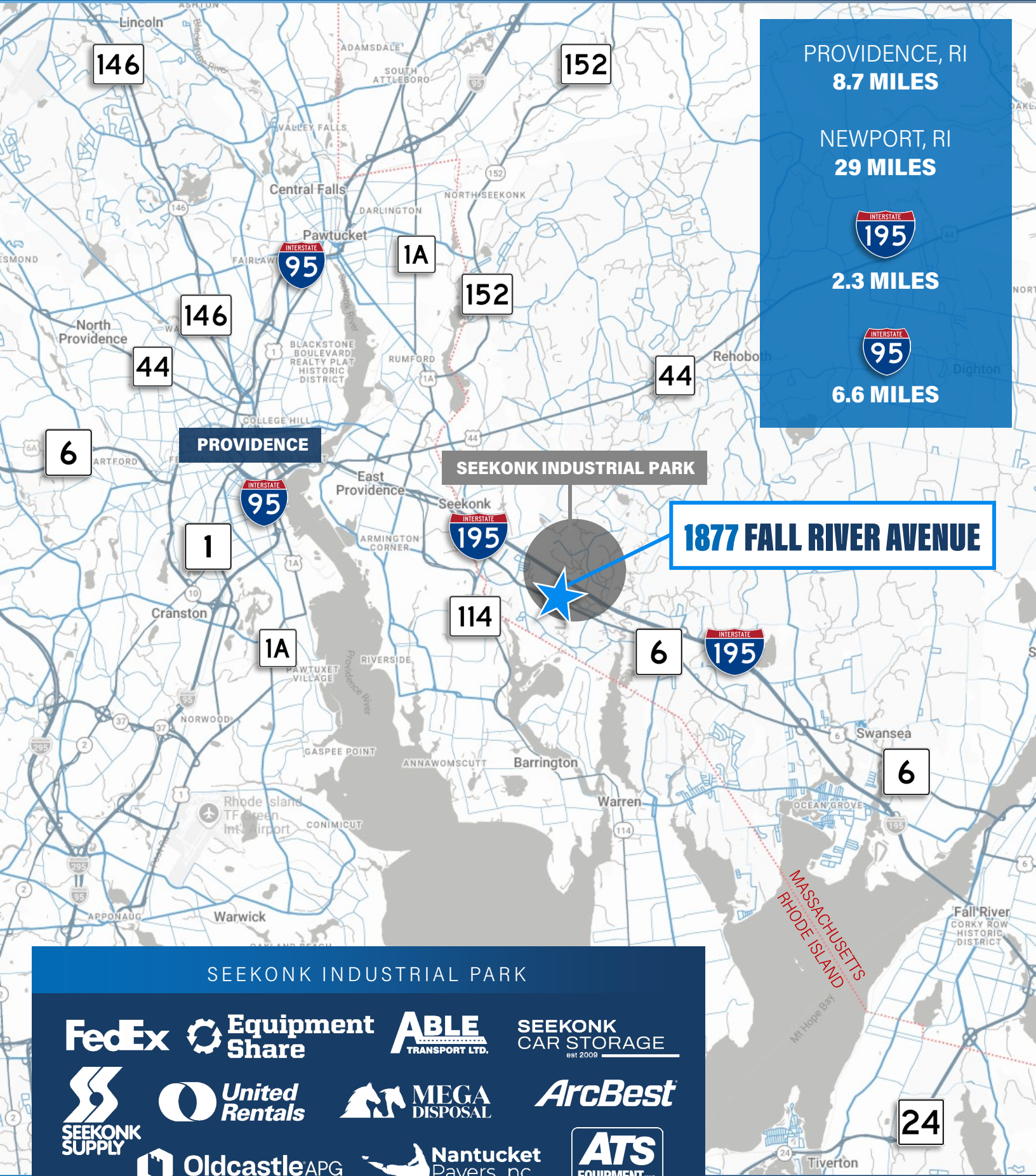
- Located within Seekonk's Industrial Park
- 2.8 miles to Route 195
- Directly off Route 6

DEMOGRAPHICS	3 MILES	5 MILES	10 MILES
Total Households	11,207	39,816	253,778
Total Population	28,710	95,770	633,252
Average HH Income	\$144,627	\$130,661	\$103,998

PROPERTY SPECIFICATIONS

Building Size:	6,000 SF
Office Space:	1,200 SF
Lot Size:	1.38 AC
Bathrooms:	2
Roof:	Standing Seam Steel Roof
Loading:	3 drive-in doors (12'x14', 14'x14', 16'x14')
Clear Height:	16'-18'
Power:	400 amp, 3-phase
Office HVAC:	100,000 BTU Forced Hot Air
Shop Heat:	High-efficiency 500,000 BTU Waste Oil Burner
Lease Rate:	Market





PROVIDENCE, RI
8.7 MILES

NEWPORT, RI
29 MILES



2.3 MILES



6.6 MILES

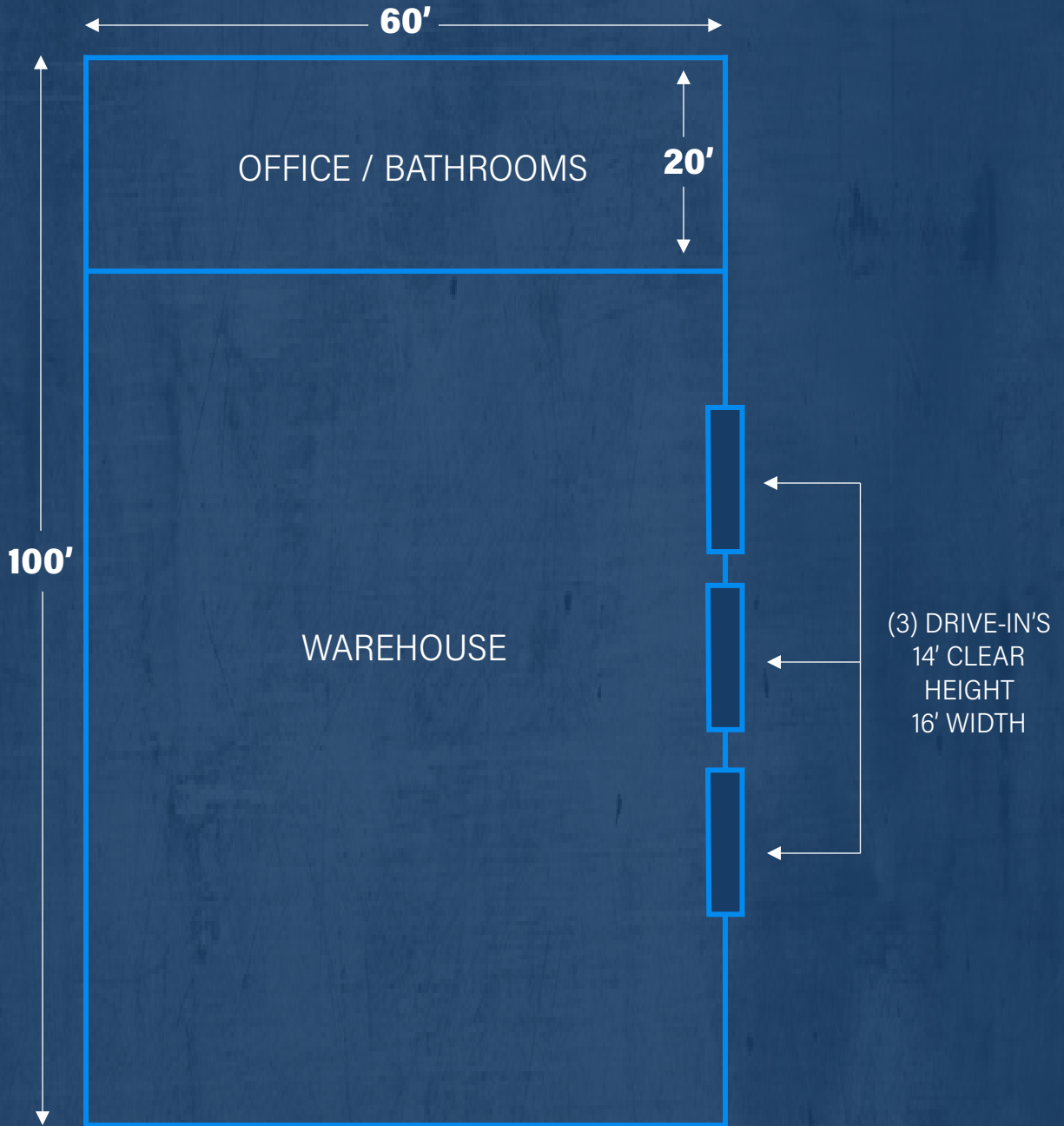
PROVIDENCE

SEEKONK INDUSTRIAL PARK

1877 FALL RIVER AVENUE

SEEKONK INDUSTRIAL PARK





1877 FALL RIVER AVENUE

SEEKONK, MA



STEPHEN FLYNN

781-917-7026

stephen.flynn@nmrk.com

MATTY DROUILLARD

425-691-7881

matty.drouillard@nmrk.com

VINCE GILCHRIST

508-530-2030

vincent.gilchrist@nmrk.com

NEWMARK

The information contained herein has been obtained from sources deemed reliable but has not been verified and no guarantee, warranty or representation, either express or implied, is made with respect to such information. Terms of sale or lease and availability are subject to change or withdrawal without notice.