

FOR LEASE

Raintree North Shopping Center

3731-3751 Hollywood Drive, Lee's Summit, MO 64082



LOT 4B AVAILABLE SPACES:

- Suite 3751: 2,415 +/- SF (former dentist)
- Suite 3743: 1,385 +/- SF (former insurance office)
- Suite 3731: 1,244 +/- SF (former 9Round)
- High Volume Price Chopper recently expanded to 75,000 SF.
- Two signalized intersections on 150 Hwy into shopping center.
- Walmart Super Center recently opened to the north.
- Lee's Summit's growth continues to accelerate in the areas surrounding Raintree North Shopping Center.

Adam Lyngar
adam@cadencekc.com
913.747.3326



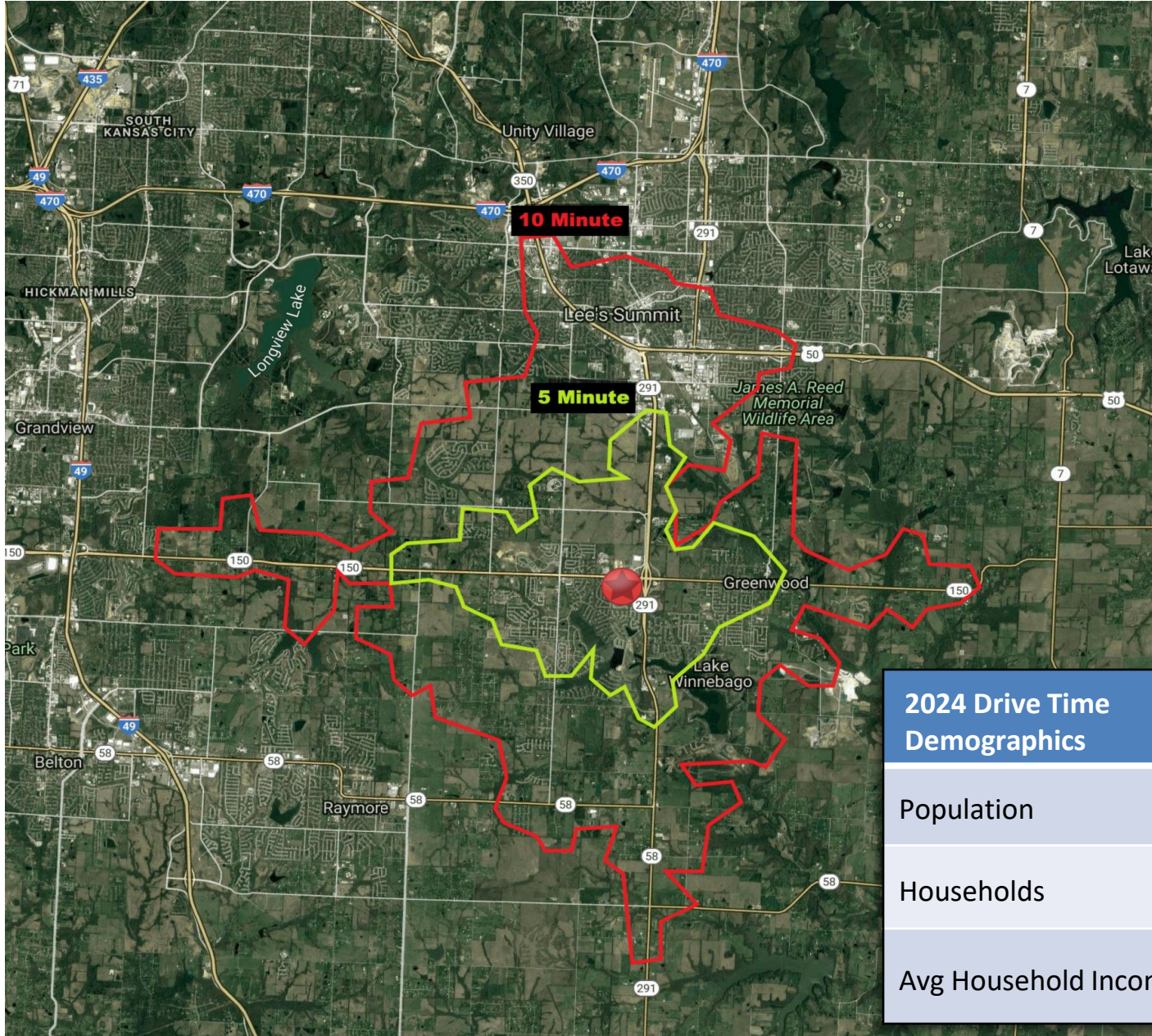
FOR LEASE

Raintree North Shopping Center
3731-3751 Hollywood Drive, Lee's Summit, MO



FOR LEASE

Raintree North Shopping Center 3731-3751 Hollywood Drive, Lee's Summit, MO



2024 Drive Time Demographics	5 minute	10 minute
Population	15,936	44,667
Households	5,918	18,068
Avg Household Income	\$110,001	\$94,421

FOR LEASE

Raintree North Shopping Center 3731-3751 Hollywood Drive, Lee's Summit, MO

Demographic Profile

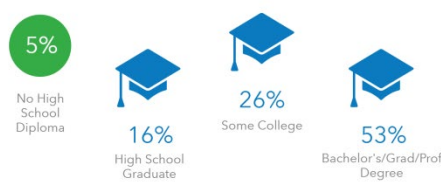
1 Mile

3 Miles

KEY FACTS



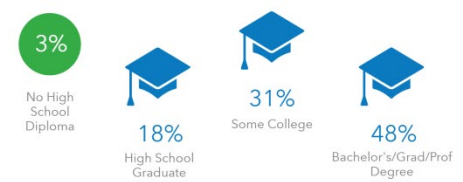
EDUCATION



KEY FACTS



EDUCATION



BUSINESS



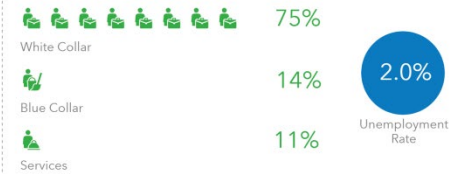
EMPLOYMENT



BUSINESS



EMPLOYMENT



INCOME



Households By Income

The largest group: \$100,000 - \$149,999 (36.3%)
The smallest group: \$15,000 - \$24,999 (3.2%)

Indicator	Value	Difference	
<\$15,000	3.6%	-1.9%	
\$15,000 - \$24,999	3.2%	-4.6%	
\$25,000 - \$34,999	4.3%	-4.0%	
\$35,000 - \$49,999	6.9%	-5.3%	
\$50,000 - \$74,999	12.7%	-8.2%	
\$75,000 - \$99,999	14.5%	-0.6%	
\$100,000 - \$149,999	36.3%	+19.3%	
\$150,000 - \$199,999	10.8%	+1.8%	
\$200,000+	7.6%	+3.5%	

Bars show deviation from Cass County

INCOME



Households By Income

The largest group: \$100,000 - \$149,999 (30.4%)
The smallest group: <\$15,000 (2.6%)

Indicator	Value	Difference	
<\$15,000	2.6%	-2.9%	
\$15,000 - \$24,999	3.4%	-4.4%	
\$25,000 - \$34,999	5.0%	-3.3%	
\$35,000 - \$49,999	7.0%	-5.2%	
\$50,000 - \$74,999	14.1%	-6.8%	
\$75,000 - \$99,999	14.8%	-0.3%	
\$100,000 - \$149,999	30.4%	+13.4%	
\$150,000 - \$199,999	12.9%	+3.9%	
\$200,000+	9.9%	+5.8%	

Bars show deviation from Cass County

Adam Lyngar
adam@cadencekc.com
913.747.3326

