



# For Sublease

851 Trafalgar Ct | Floors 3 & 4  
13,945 - 35,823 ± RSF Available

 **JLL** SEE A BRIGHTER WAY

# Maitland Lakes

## 851 Trafalgar Ct



**Maitland Lakes**  
Office Park



**174,000 SF**  
Four Story Office Building



**4.0/1,000 SF**  
Parking Ratio



**Engineer**  
On-Site



**Cafe**  
On-Site



**Lake and Garden**  
Views



**Third Floor**  
13,945 SF



**Fourth Floor**  
21,878 SF



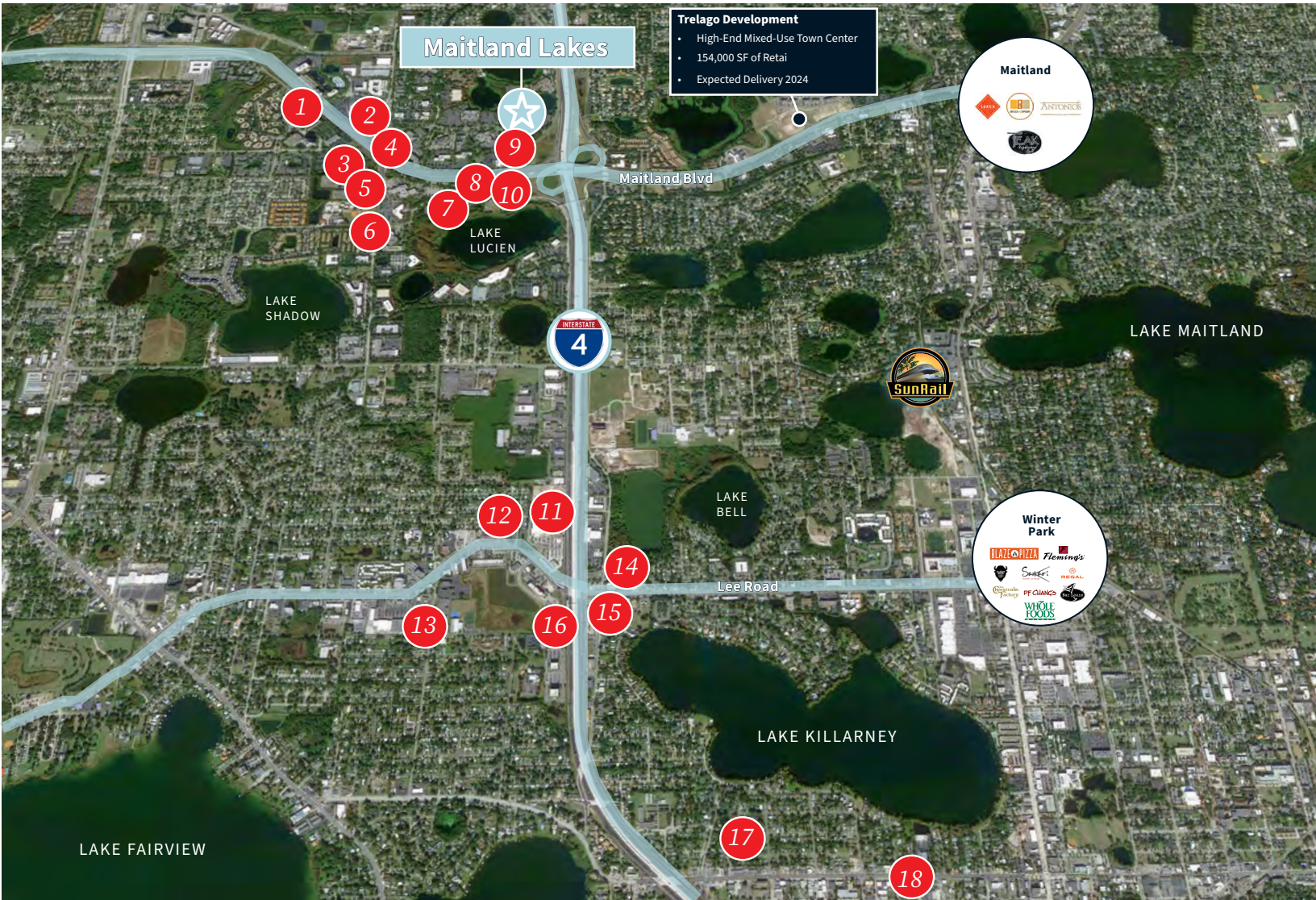
**10/31/2027**  
Sublease Exp. Date

*Maitland Lakes offers access to suburban shopping, dining and service amenities. Area highlights include Genesis Health Club - Orlando Sportsplex, West Town Corners featuring a variety of retailers and restaurants, proximity to Lake Lilly Park and Park Avenue in downtown Winter Park.*



# Maitland

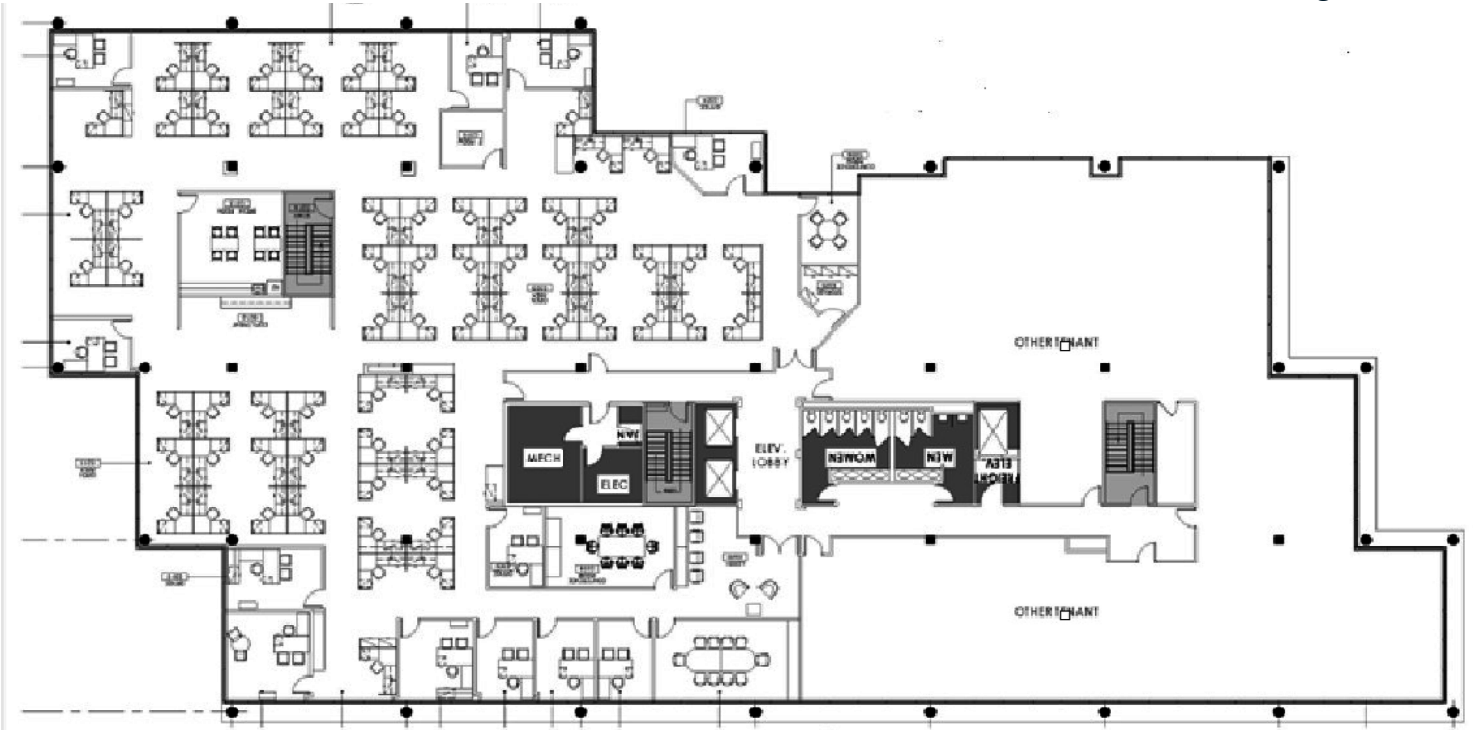
The City of Maitland is a premier suburban community of Orlando. Located conveniently off of I-4 and just 7 miles from downtown Orlando, Maitland offers the benefits of a larger metro with access to amenities. Employees benefit from easy access to area retail, restaurant and service amenities in addition to variety housing options in the surrounding area. The Maitland Lakes building offers easy access to several major roadways, providing easy access to the greater Orlando area.



1. Chick-Fil-A
2. Orlando Ice Den
3. Extended Stay America- Orlando- Maitland
4. Sam Snead's Oak Grill and Tavern
5. Courtyard by Marriott Orlando Altamonte
6. Curry Bowl Orlando
7. Homewood Suites by Hilton Orlando- Maitland
8. 7-Eleven
9. Sheraton Orlando North

10. Applebee's Grill
11. The Home Depot
12. Christner's Prime Steak & Lobster
13. Walmart
14. Starbucks
15. Denny's
16. Countryside Inn & Suites
17. Hunger Street Tacos
18. 4 Rivers Smokehouse

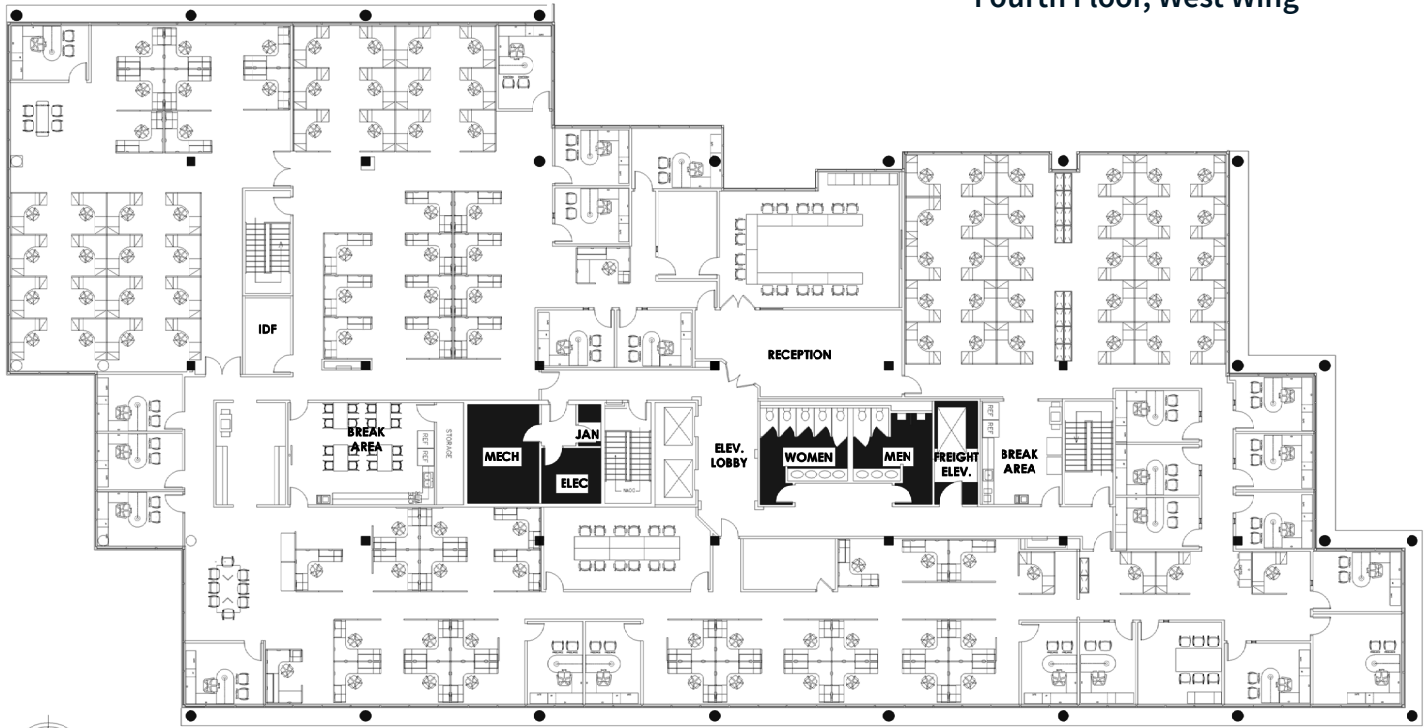
Third Floor, West Wing



- 13,945 RSF
- Sublease Exp. Date: 10/31/2027
- Open Work Stations Throughout
- 12 Private Offices
- 4 Conference/Huddle Areas



Fourth Floor, West Wing



- 21,878 RSF
- Sublease Exp. Date: 10/31/2027
- Open Work Stations Throughout
- 24 Private Offices
- 2 Large Conference Areas
- Private Restroom
- Pantry/ Break Area



**Jamie Barati**  
**Senior Vice President**  
407-930-1803  
jamie.barati@jll.com

[jll.com](https://www.jll.com)

**John Worrell**  
**Senior Vice President**  
321-684-9240  
john.worrell@jll.com