



NORTH AMERICA

EUROPE

ASIA/PACIFIC

LATIN AMERICA

AFRICA

AUSTRALIA

COMMERCIAL
REAL ESTATE
ADVOCATES

1401 S.E. 29th St. – RARE SUBLEASE OPPURTUNITY

Entire Building Available Immediately!



Available For Immediate Sublease
18,512 Square Feet
Term Expires April 31, 2016

For property inquires
contact:

Brandon Glick
312.324.3600

**Brandon.Glick@
mohrpartnersil.com**

Steven J. Paramski
312.324.3600
847.561.6248

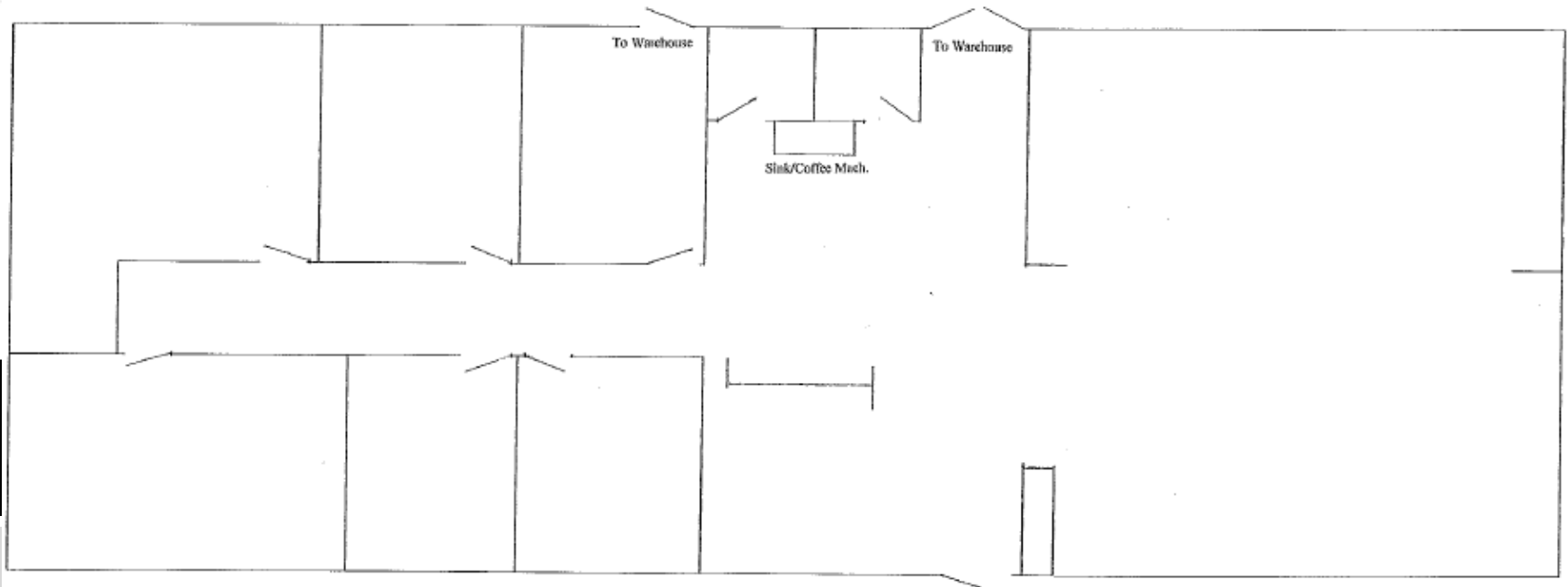
**steve.paramski@
mohrpartnersil.com**

- Excellent visibility
- Easy Access on/off I-35
- Large yard (95' x174', 30' wide access from building side)
- Ideal for light manufacturing, distribution and general industrial use
- Rate is negotiable
- 5 ton bridge crane in place



1401 S.E. 29th Street

3,200 square foot office floor plan



NORTH AMERICA

EUROPE

ASIA/PACIFIC

LATIN AMERICA

AFRICA

AUSTRALIA

COMMERCIAL
REAL ESTATE
ADVOCATES

For property inquires
contact:

Brandon Glick
312.324.3600

Brandon.Glick@
mohrpartnersil.com

Steven J. Paramski
312.324.3600
847.561.6248

steve.paramski@
mohrpartnersil.com



1401 S.E. 29th Street

Additional Information:

- 6,912 sft shop, 1 working 5ton bridge crane, 2nd not operational
Shop is 48' x 144'
- 8,400 sft warehouse Clear Ceiling eight is 19'6"
- 3,200 sft mezzanine above office 7'6" ceiling

