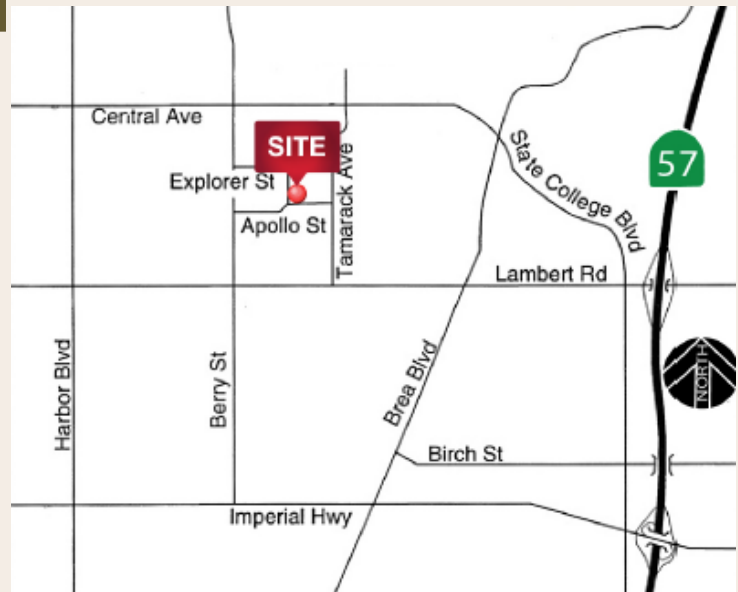


AVAILABLE NOW!!!



547 W APOLLO ST BREA, CA 92821

- 1,680 Square Feet
- Apollo Street Frontage / Corner Location
- Fully Fire Sprinklered
- 2.5:1 Parking Ratio
- 100 & 200 Amps, 120/208 Volt, 3 Phase Power
- 12' x 12' Ground Level Truck Door



MANAGEMENT PROPERTIES INC



Office 951-296-5225 Cell 951-204-4085



Email kristah@huncompi.com



27286 Via Industriai, Ste. B
Temecula, CA 92590

