

19566 KELLY ROAD
HARPER WOODS, MICHIGAN



**SIGNATURE
ASSOCIATES**
KNOW SIGNATURE | KNOW RESULTS

RETAIL FOR LEASE
1,500 Square Feet Available



PROPERTY FEATURES

- 1,500 square feet available
- 12' clear height
- Zoned C-2
- Retail storefront
- Lease Rate: \$1,000/month Gross



For more information, please contact:

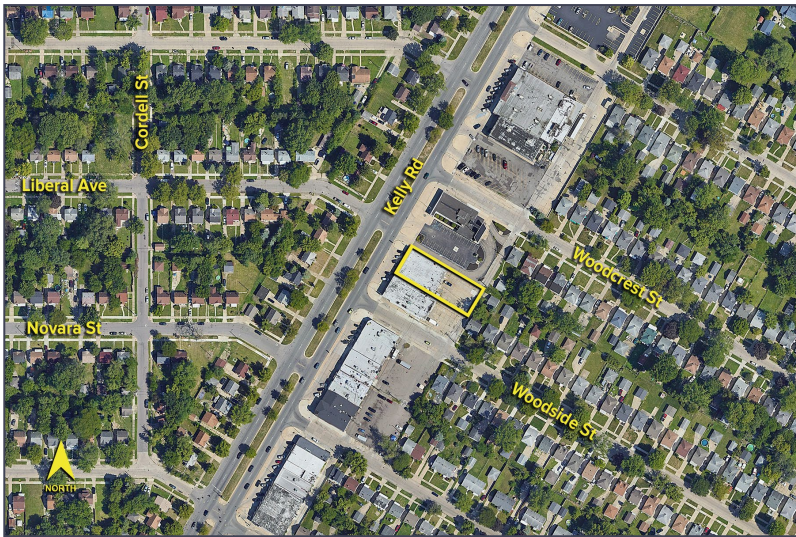
JOE STACK
(248) 359 0615
jstack@signatureassociates.com

SIGNATURE ASSOCIATES
One Towne Square, Suite 1200
Southfield, MI 48076
www.signatureassociates.com

19566 Kelly Road – Harper Woods, Michigan

Retail For Lease

1,500
Square Feet
AVAILABLE

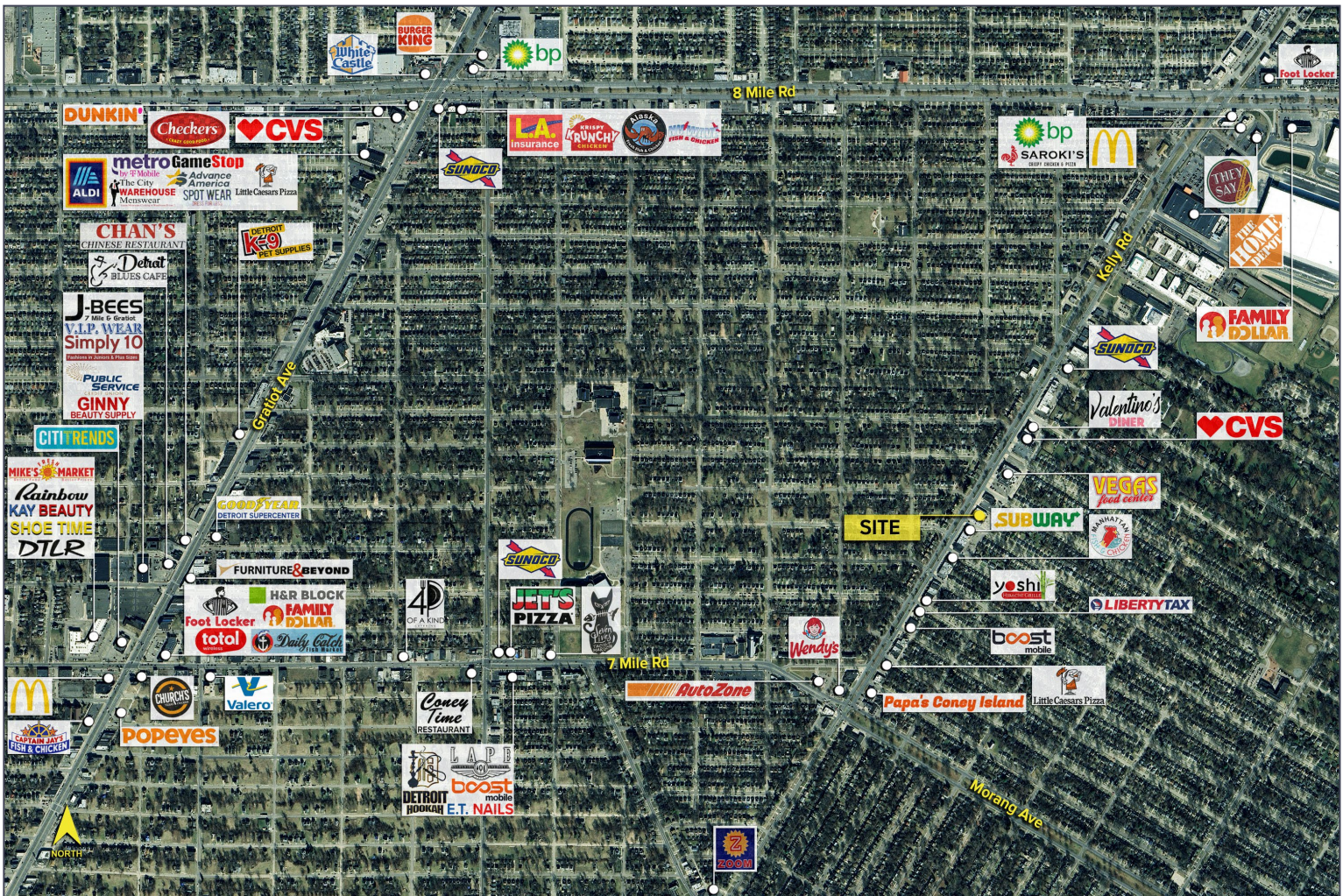


DEMOGRAPHICS

	POPULATION	MED. HH INCOME
1 MILE	22,330	\$45,548
3 MILE	164,042	\$46,443
5 MILE	333,437	\$65,128

TRAFFIC COUNTS (TWO-WAY)

9,412	Kelly Rd. SW of Moross Rd.
14,724	Kelly Rd. NE of Moross Rd.
9,822	Moross Rd. NW of Kelly Rd.
15,080	Moross Rd. SE of Kelly Rd.



For more information, please contact:

JOE STACK
(248) 359 0615
jstack@signatureassociates.com

SIGNATURE ASSOCIATES
One Towne Square, Suite 1200
Southfield, MI 48076
www.signatureassociates.com