

prepared by:
McLAUGHLIN ENGINEERING COMPANY
 400 N.E. 3rd AVENUE FORT LAUDERDALE, FLORIDA
 PHONE: (305) 763-7611

RECORD LAND SURVEY

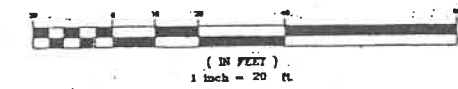
A PORTION OF BLOCK 25, PINEHURST (PLAT BOOK 5, PAGE 13, B.C.R.)

WENDY'S SITE 103

ADDRESS:
 1840 EAST ATLANTIC BOULEVARD
 POMPANO BEACH, FLORIDA

CERTIFIED TO:
 WENDY'S INTERNATIONAL, INC. AND CHICAGO TITLE INSURANCE COMPANY

GRAPHIC SCALE



LEGEND

- Δ = CENTRAL ANGLE (DELTA)
- R = RADII
- A OR L = ARC LENGTH
- CH.BRG. = CHORD BEARING
- TAN.BRG. = TANGENT BEARING
- P.O.C. = POINT OF COMMENCEMENT
- P.O.B. = POINT OF BEGINNING
- W/MC. CAP. = W/ McLAUGHLIN ENGINEERING CO. CAP
- P.R.M. = PERMANENT REFERENCE MONUMENT
- CONC. = CONCRETE
- C.B.S. = CONCRETE BLOCK AND STUCCO
- ELEV. = ELEVATION
- O/S = OFFSET
- A/C = AIR CONDITIONING
- E = CENTERLINE OF RIGHT-OF-WAY
- F.P.L. = FLORIDA POWER AND LIGHT CO.
- S.B.T. = SOUTHERN BELL TELEPHONE
- B.C.R. = BROWARD COUNTY RECORDS
- D.C.R. = DADE COUNTY RECORDS
- O.R. = OFFICIAL RECORDS BOOK
- P.G. = PAGE
- R/W = RIGHT-OF-WAY

VICINITY MAP
 NOT TO SCALE

1	2	3
4	5	6
7	8	9
10	11	12
13	14	15
16	17	18
19	20	21
22	23	24
25	26	27

LEGAL DESCRIPTION

PARCEL A:
 Lots 1, 2, and 3, of Block 25, PINEHURST SUBDIVISION, according to the plat thereof, as recorded in Plat Book 5, at Page 13, of the Public Records of Broward County, Florida, less the North 10 feet.

PARCEL B:
 Lots 7 and 8 of Block 25, PINEHURST SUBDIVISION, according to the plat thereof, as recorded in Plat Book 5, at Page 13, of the Public Records of Broward County, Florida.

Said lands situate, lying and being in the City of Pompano Beach, Broward County, Florida, and containing 37,048 square feet or 0.8505 acres, more or less.

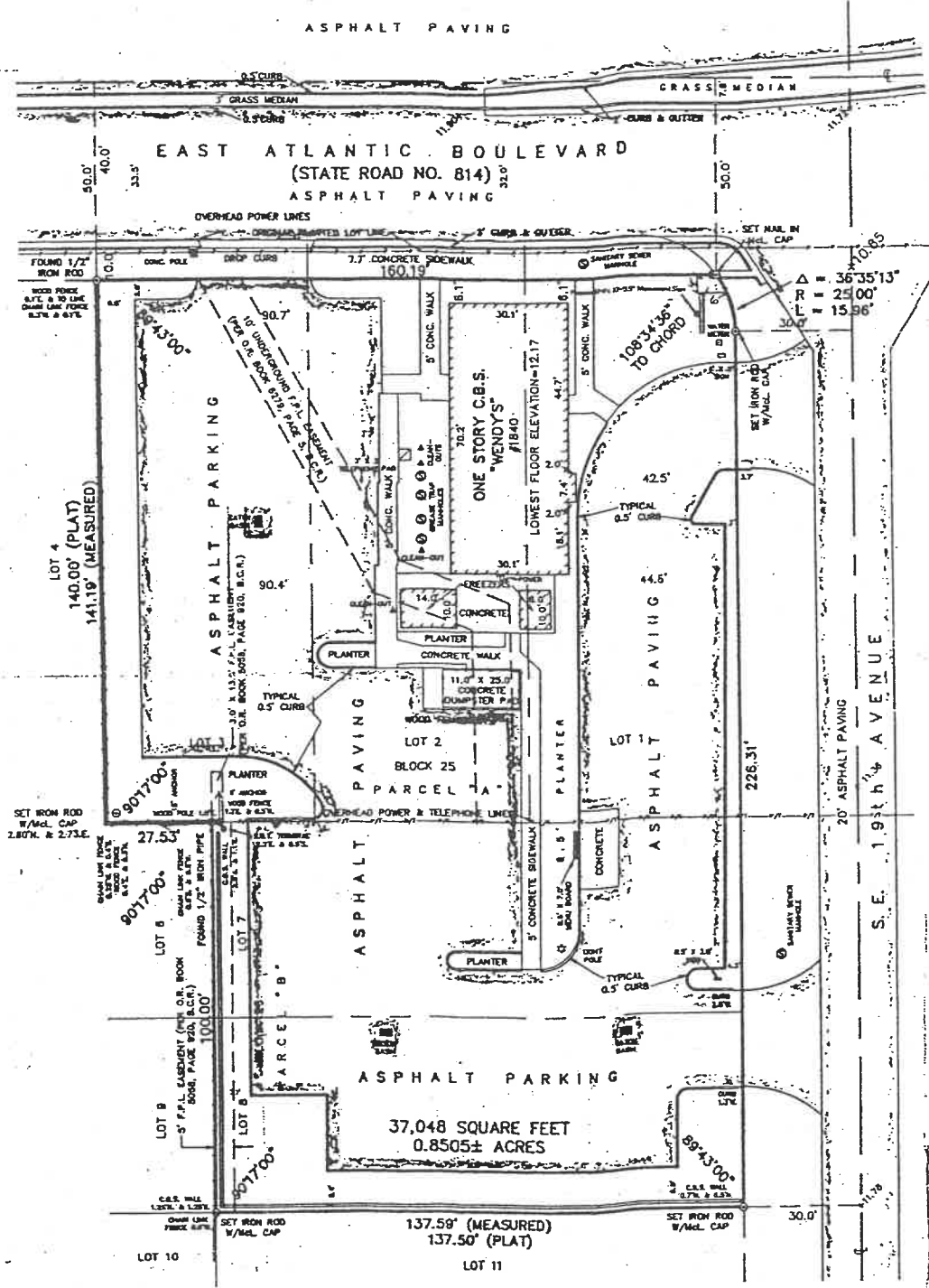
CERTIFICATION

We hereby certify that this survey meets the minimum technical standards as set forth by the Florida Board of Professional Land Surveyors in Chapter 2119-6 Florida Administrative Code, pursuant to Section 472.027, Florida Statutes.

Dated at Fort Lauderdale, Florida, this 28th day of October, 1992.

McLAUGHLIN ENGINEERING COMPANY
 James M. McLaughlin, Jr.
 Registered Land Surveyor No. 4497
 State of Florida

Pompano
 Atlantic Blvd
 74108



OFFICE NOTES
 FIELD BOOK NO. 1047-46
 THE ORDER NO. E-3483
 CHECKED BY: C.A.
 DRAWN BY: J.M.J.
 C:\SUR\43443