

# 1881 N. PONTIAC TRAIL WALLED LAKE, MICHIGAN



**SIGNATURE  
ASSOCIATES**  
KNOW SIGNATURE | KNOW RESULTS

OFFICE FOR SALE  
4,200 Square Feet Available



## PROPERTY FEATURES

- 4,200 square feet available
- Previously a medical office building with 4 suites each with water and electric
- This parcel has been separated from 1885 Pontiac Trail and is available on its own
- All utilities available at the site
- Zoned General Office
- 14,756 cars per day on Pontiac Trail
- Contact broker for sale price



For more information, please contact:

**JEFF LEMANSKI**  
(248) 359 0641  
jlemanski@signatureassociates.com

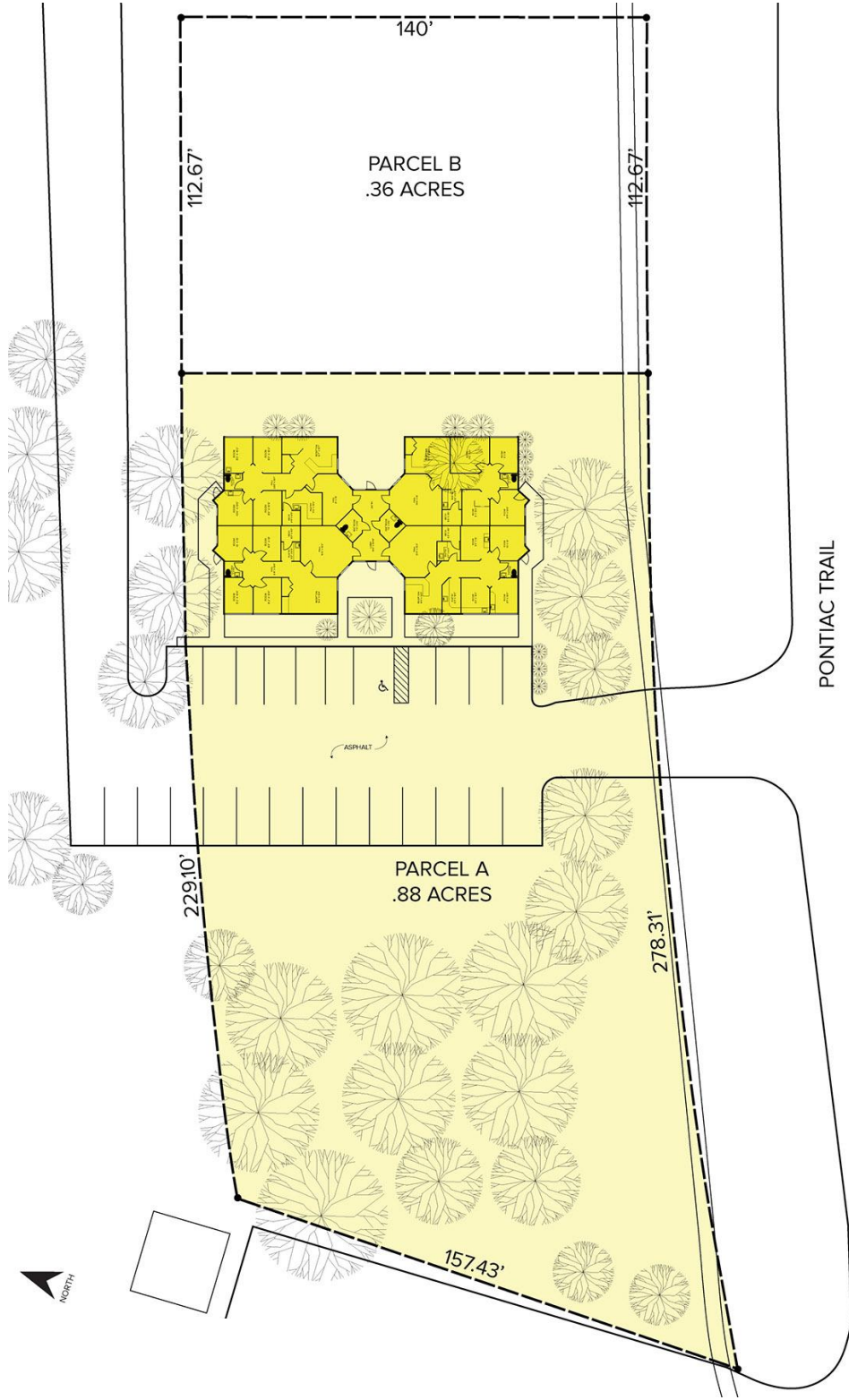
**SIGNATURE ASSOCIATES**  
One Towne Square, Suite 1200  
Southfield, MI 48076  
www.signatureassociates.com

# 1881 N. Pontiac Trail – Walled Lake, Michigan

Office For Sale

4,200  
Square Feet  
AVAILABLE

## Site Plan



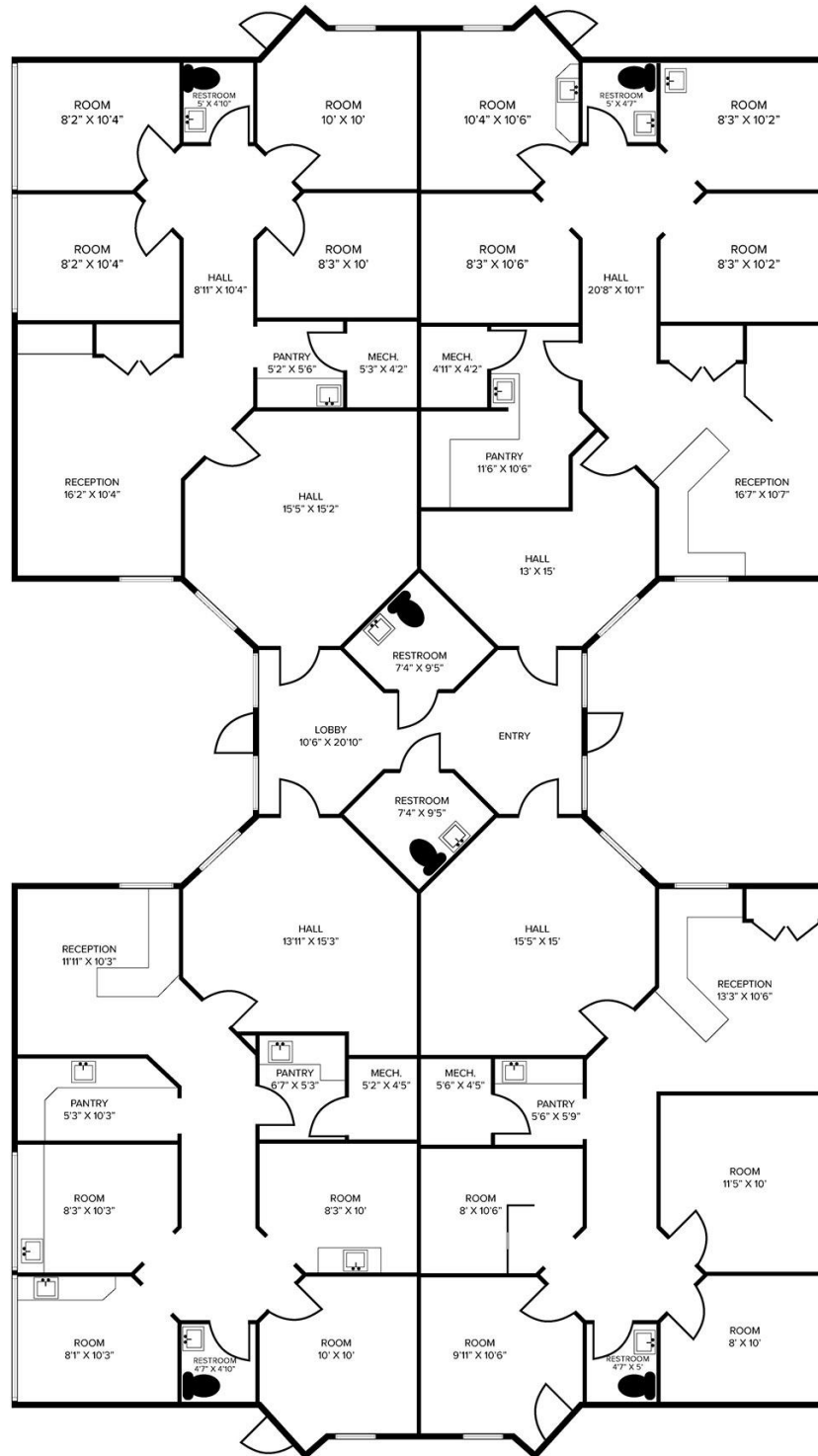
For more information, please contact:

**JEFF LEMANSKI**  
(248) 359 0641  
jlemanski@signatureassociates.com

**SIGNATURE ASSOCIATES**  
One Towne Square, Suite 1200  
Southfield, MI 48076  
www.signatureassociates.com

Information is subject to verification and no liability for errors or omissions is assumed. Price is subject to change and listing withdrawal.

### Floor Plan



For more information, please contact:

**JEFF LEMANSKI**

(248) 359 0641

[jlemanski@signatureassociates.com](mailto:jlemanski@signatureassociates.com)

**SIGNATURE ASSOCIATES**

One Towne Square, Suite 1200

Southfield, MI 48076

[www.signatureassociates.com](http://www.signatureassociates.com)

# 1881 N. Pontiac Trail – Walled Lake, Michigan

Office For Sale

4,200  
Square Feet  
AVAILABLE

Aerial



For more information, please contact:

**JEFF LEMANSKI**

(248) 359 0641

[jlemanski@signatureassociates.com](mailto:jlemanski@signatureassociates.com)

**SIGNATURE ASSOCIATES**  
One Towne Square, Suite 1200  
Southfield, MI 48076  
[www.signatureassociates.com](http://www.signatureassociates.com)