

## COMMERCIAL AND RESIDENTIAL DEVELOPMENT OPPORTUNITY ON 57 ACRES



4 acres on busy Route 73 in Skippack, PA. Surrounded by existing and future residential developments, and steps away from the Historic Village of Skippack!

### PRESENTED BY

Kevin M. Cain, SIOR  
215-651-2890 (m)  
484-893-1200 (o)  
kcain@kwcommercial.com

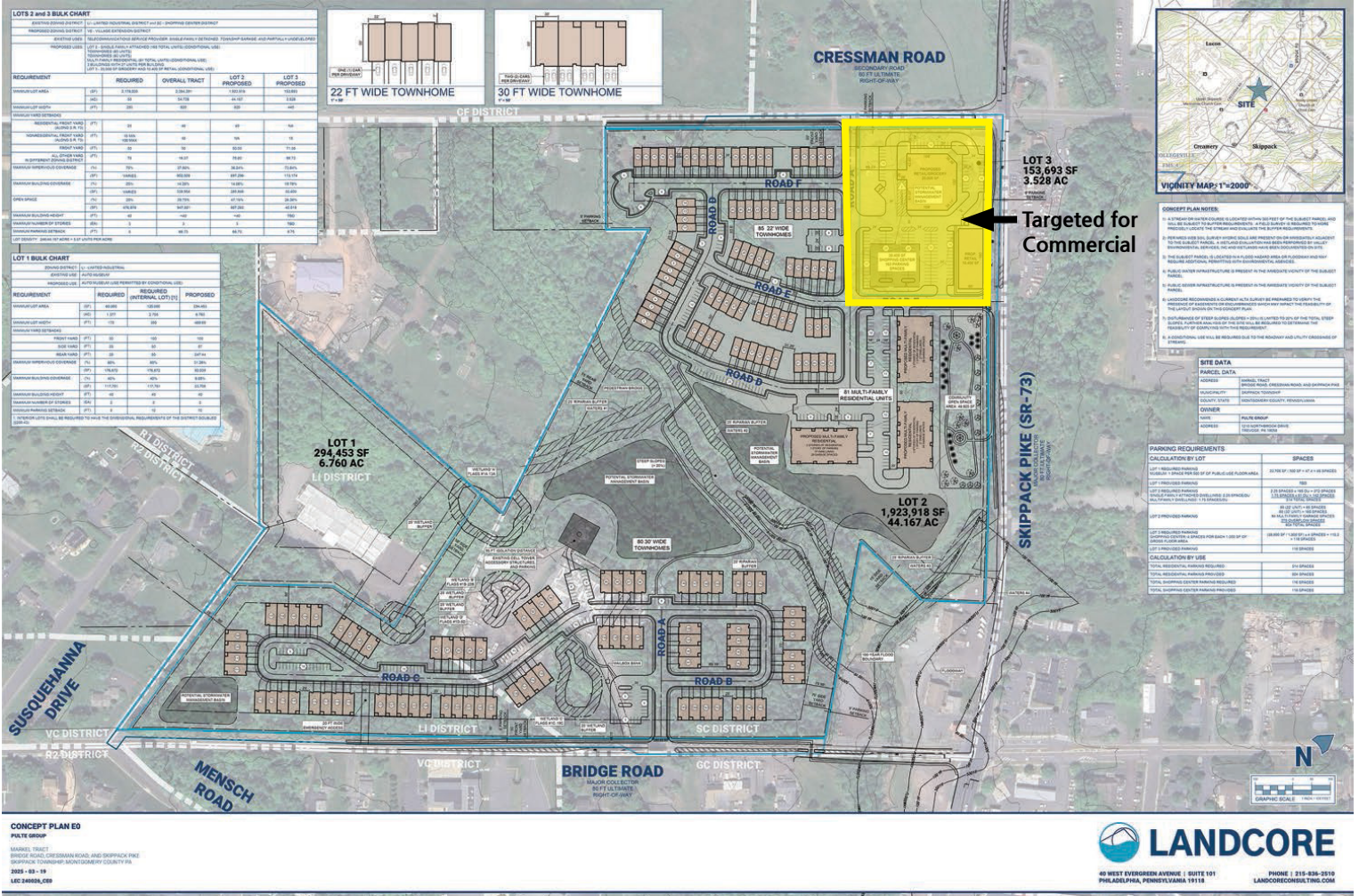
James R. Wrigley  
215-519-2290 (m)  
215-855-5100 (o)  
jimw@kpgcm.com

Keith T. Metzger  
267-218-4819 (m)  
215-855-5100 ext 118 (o)  
keithm@kpgcm.com

# RESIDENTIAL AND COMMERCIAL DEVELOPMENT OPPORTUNITY

Skippack, PA

## SAMPLE LAYOUT



PRESENTED BY



Kevin M. Cain, SIOR  
215-651-2890 (m) | 484-893-1200 (o)  
kcain@kwcommercial.com

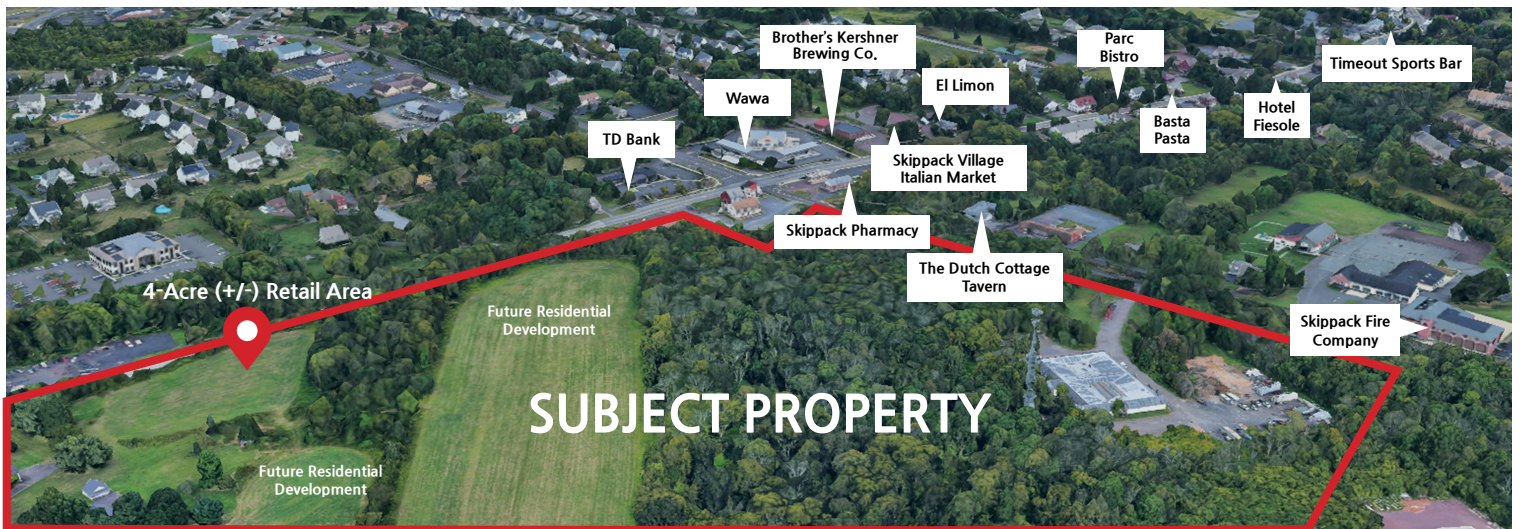
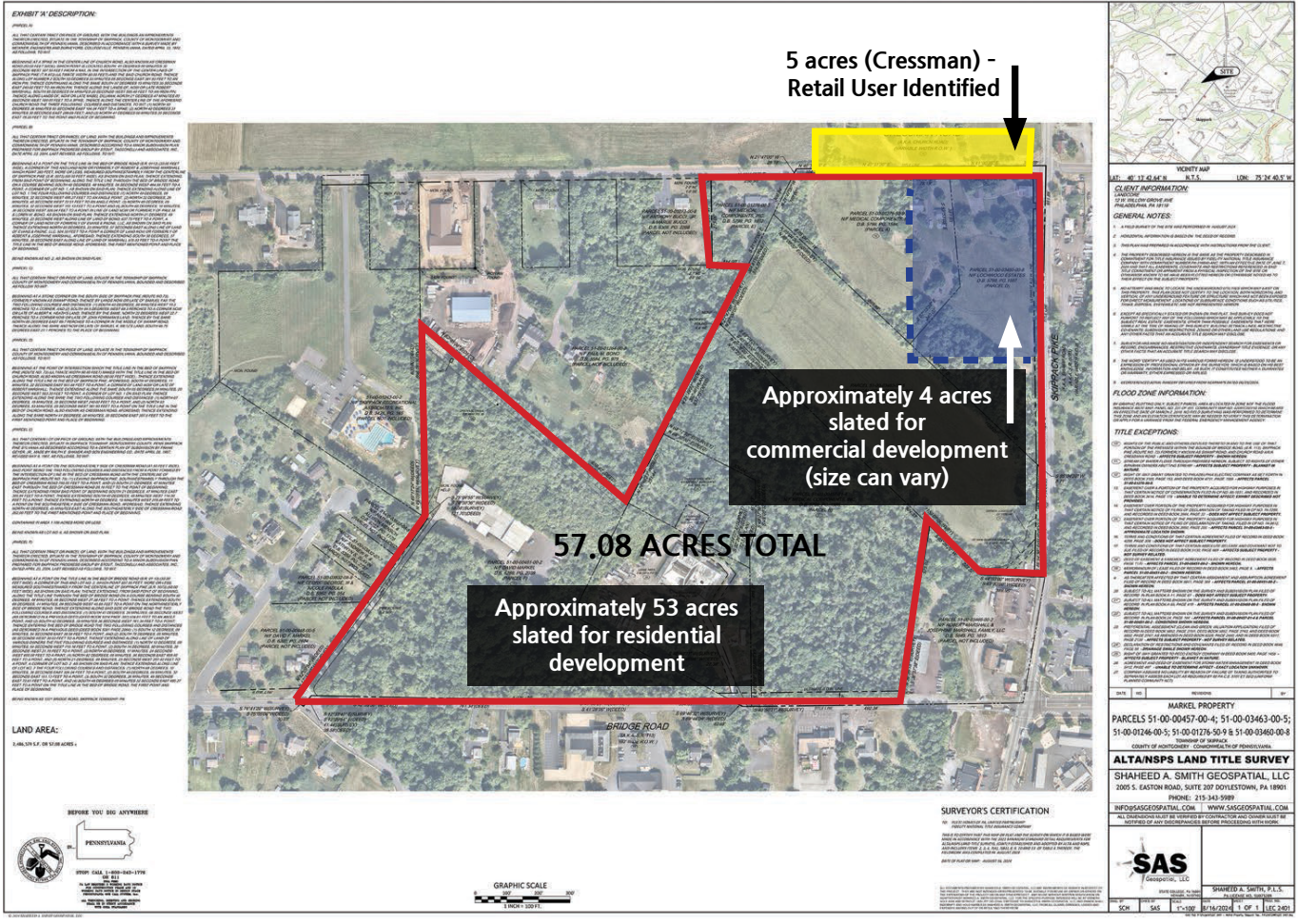


James R. Wrigley  
215-519-2290 (m) | 215-855-5100 (o)  
jimw@kpgcm.com

Keith T. Metzger  
267-218-4819 (m) | 215-855-5100 ext 118 (o)  
keithm@kpgcm.com

# RESIDENTIAL AND COMMERCIAL DEVELOPMENT OPPORTUNITY

Skippack, PA



PRESENTED BY



Kevin M. Cain, SIOR  
 215-651-2890 (m) | 484-893-1200 (o)  
 kcain@kwcommercial.com



James R. Wrigley  
 215-519-2290 (m) | 215-855-5100 (o)  
 jimw@kpgcm.com

Keith T. Metzger  
 267-218-4819 (m) | 215-855-5100 ext 118 (o)  
 keithm@kpgcm.com