

FOR LEASE

NORTHWEST AIRPARK

*±15,649 SF Industrial Property with
Hangar Available Now in Deer Valley*

1628 W WILLIAMS DR, PHOENIX, AZ 85027

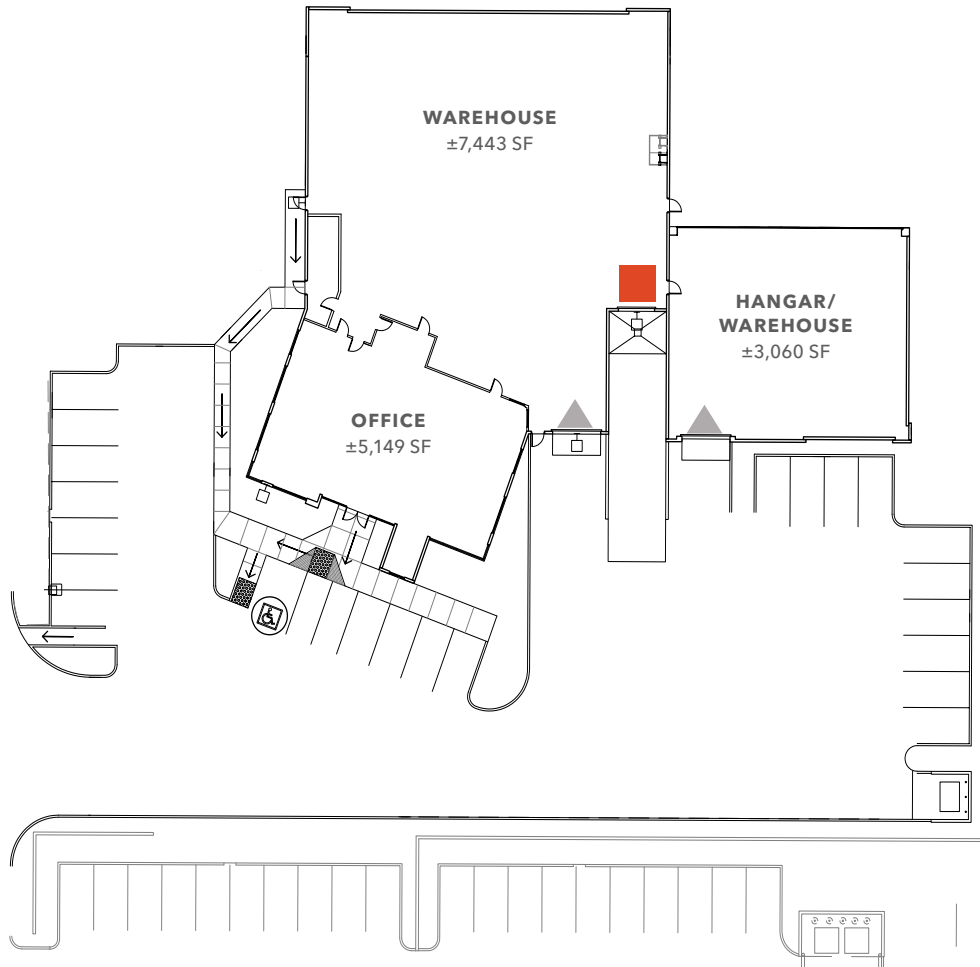


PROPERTY OVERVIEW

| | |
|------------------------|--|
| TOTAL SF | ±15,649 |
| OFFICE SF | ±5,149 (Two Floors) |
| A/C | 100% |
| WAREHOUSE SF | ±7,500 |
| HANGAR SF | ±3,060 |
| HANGAR DOOR DIMENSIONS | 23' x 56' |
| ZONING | CP/BP, City of Phoenix |
| CLEAR HEIGHT | 20' - 23' |
| LOT SIZE | 1.76 AC |
| PARKING | 24 Total Parking Spaces 14 Covered |
| YEAR BUILT | 2005 by Sun State Builders |
| POWER | 800 Amps, 277/480V |
| LOADING | 2 Grade Level Doors & Truckwell |
| SPRINKLERS | Yes |
| SECURITY | Alarm System |
| SOLAR POWER | Premises Has Solar On-Site to Reduce Monthly Power Bills |
| ADDITIONAL FEATURES | Includes ±18,000 SF Lot for Expansion |



SITE PLAN



±15,649 SF

AVAILABLE

\$1.45 NNN

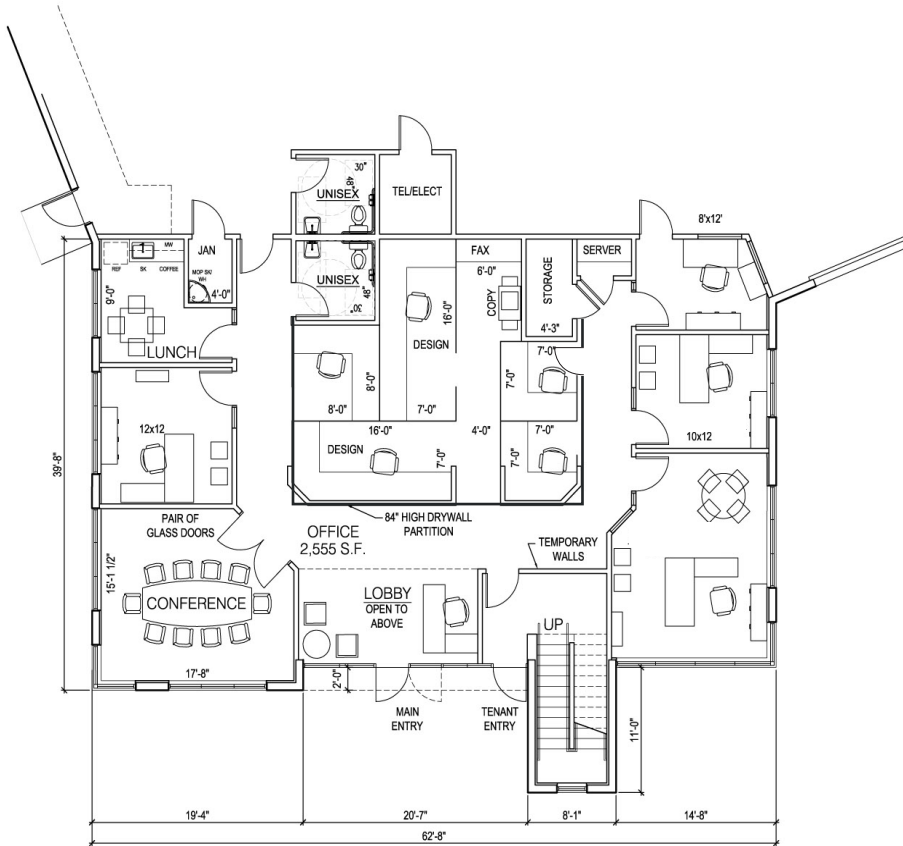
LEASE RATE (SF/YR)



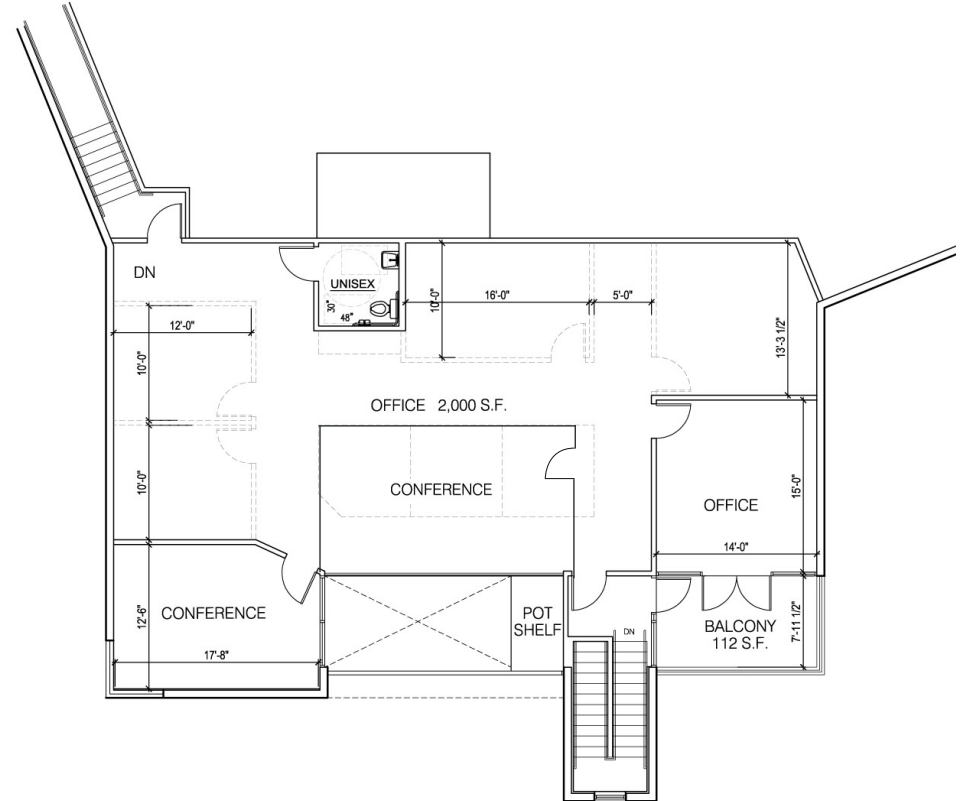
▲ Grade level loading ■ Dock loading

FLOOR PLAN

FIRST FLOOR OFFICE



SECOND FLOOR OFFICE



CORPORATE NEIGHBORS



For more information, contact

MIKE CIOSEK, SIOR
Executive Vice President
602.513.5135
mike.ciosek@kidder.com

ERIC BELL, SIOR
Executive Vice President
602.513.5151
eric.bell@kidder.com

CHASE GIANNI
Associate
602.513.5138
chase.gianni@kidder.com

KIDDER.COM

This information supplied herein is from sources we deem reliable. It is provided without any representation, warranty, or guarantee, expressed or implied as to its accuracy. Prospective Buyer or Tenant should conduct an independent investigation and verification of all matters deemed to be material, including, but not limited to, statements of income and expenses. Consult your attorney, accountant, or other professional advisor. All Kidder Mathews designs are the sole property of Kidder Mathews. Branded materials and layouts are not authorized for use by any other firm or person.

