

FLEX SPACE

FOR LEASE

\$6,500 NNN MONTHLY

FOR OFFICE & WAREHOUSE

Parking Available - negotiable

Office Furnishings Available - negotiable

437 SE MARTIN LUTHER KING

PORTLAND, OR 97214

(Enter on Stark)

OFFICE.: 2610 SF

WAREHOUSE : 3643 SF

+ MEZZANINE: 540 SF IN WAREHOUSE AREAS



**FOR SHOWING OR
MORE PROPERTY DETAILS CONTACT:**

CRAIG GILBERT, PRINCIPAL BROKER

503-249-1706

CGILBERT@WINDERMERE.COM

ROSE M OJEDA, BROKER

503-998-6450

ROSEOJEDA@WINDERMERE.COM

WINDERMERE COMMUNITY COMMERCIAL REALTY

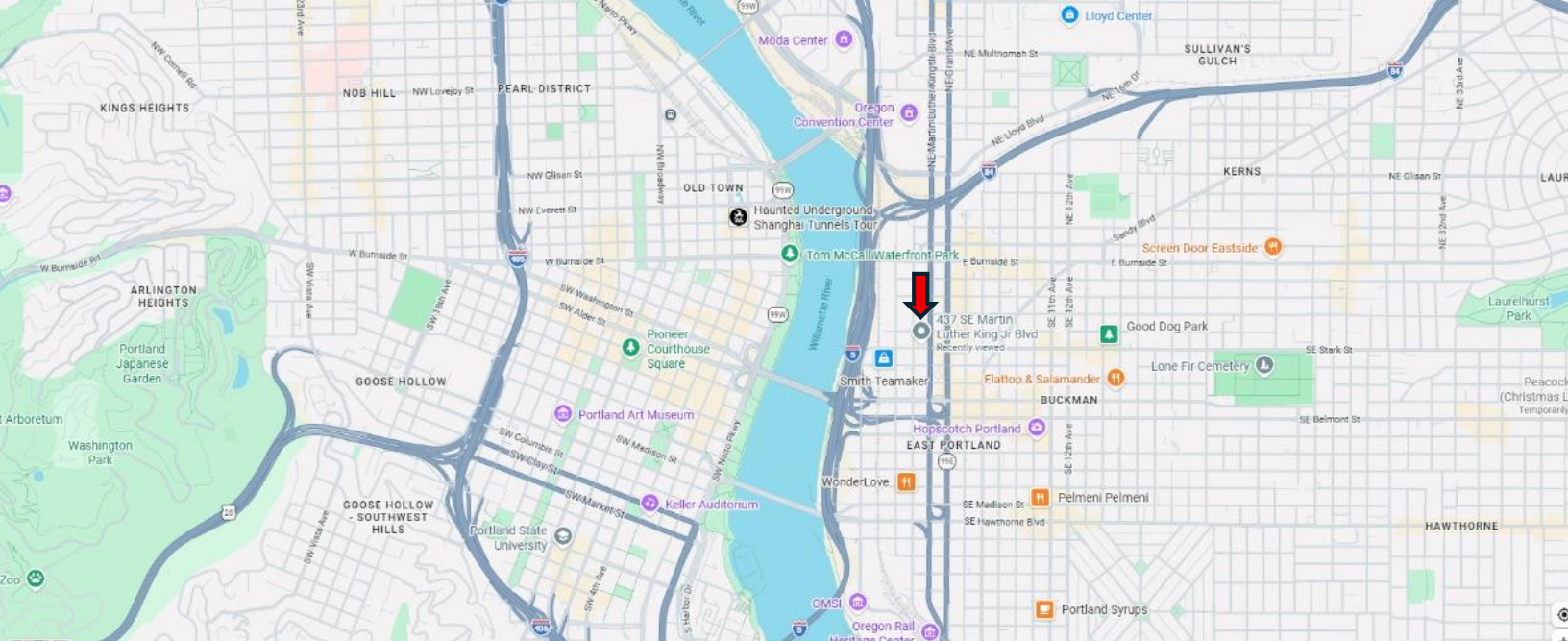
2105 NE CESAR E CHAVEZ BLVD. SUITE 220

PORTLAND, OR 97212

503-249-1706

FEATURES

- 1930's CONSTRUCTION
- WAREHOUSE FEATURES DOCK HIGH ROLLING DOOR, PLUS MEZZANINE
- GOOD EXPOSURE AND VISIBILITY CORNER
- POTENTIAL UNDERGROUND PARKING
- PLENTY OF NATURAL LIGHTING FOR OFFICES
- MARTINI STYLE PILLARS IN OFFICE & WAREHOUSE
- EASY ACCESSIBILITY TO DOWNTOWN & I-5
- STREETCAR STOP AT MLK & STARK
- AVAILABLE IMMEDIATELY

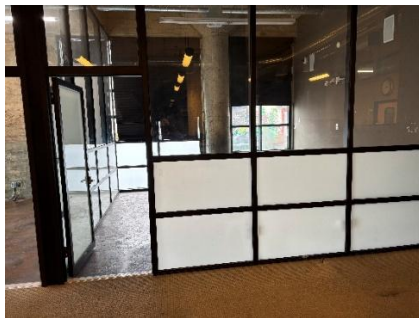


Location



View from corner of 3rd Ave. & Stark St. View from 3rd Avenue

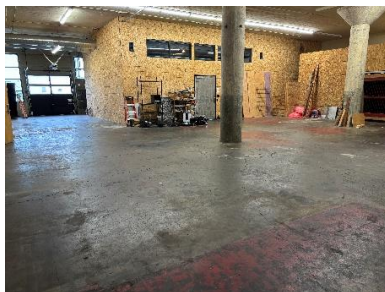
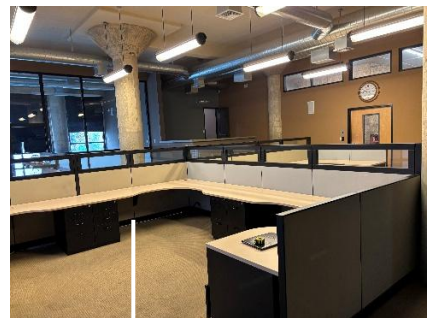
Interior Photos



Private Office

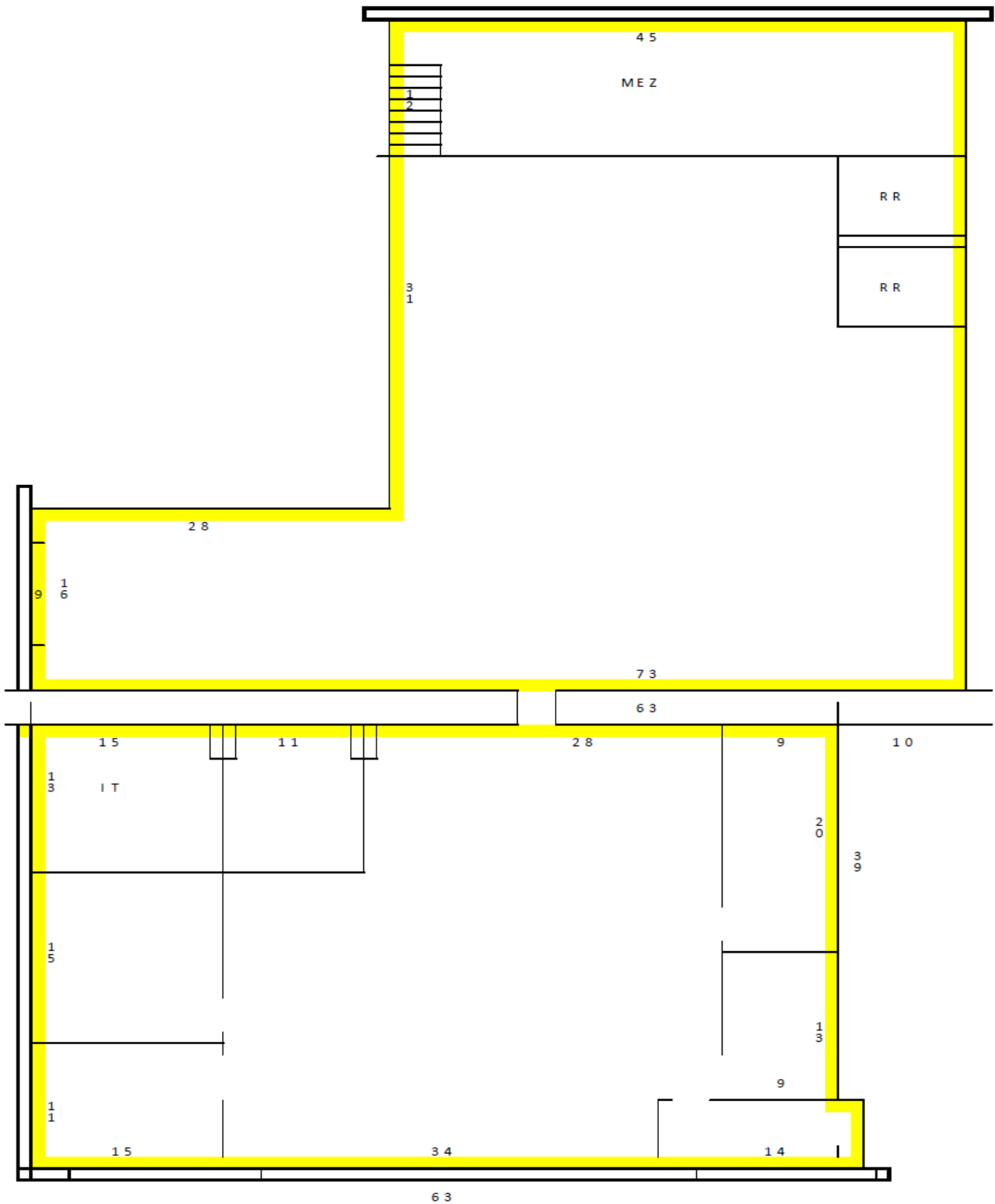


Open Office



Warehouse

FLOOR PLAN



Warehouse = 3640 SF, plus 540 SF Mezzanine

Office = 2610 SF, architectural layout of office furnishings available