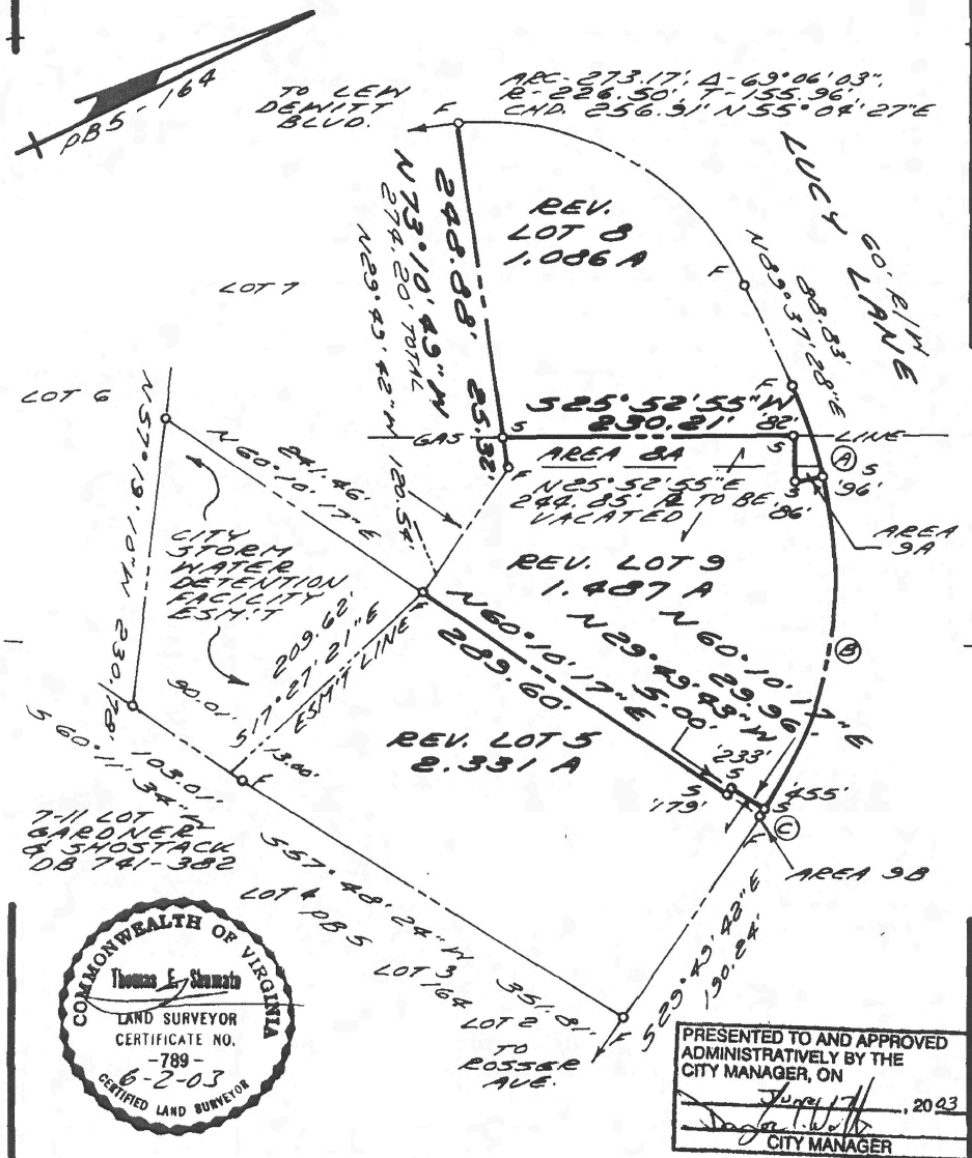


PG0025 OCT-98

RE METES & BOUNDS

82' - 186' S 69° 07' 05" E 37.10'
86' - 196' N 12° 56' 24" E 21.00'
① - CURVE (TYP.) SEE SHT. 2



SIMPLE SUBDIVISION PLAT
 REV. LOTS 5, 8 & 9, COYNER
 COMMERCIAL PARK
 WAYNESBORO, VIRGINIA
 SCALE 1" = 100' MAY 20, 2003
 TOM SHUMATE SURVEYOR, INC.
 WAYNESBORO, VA. 540-9422990

"2589 LUCKY"

3838