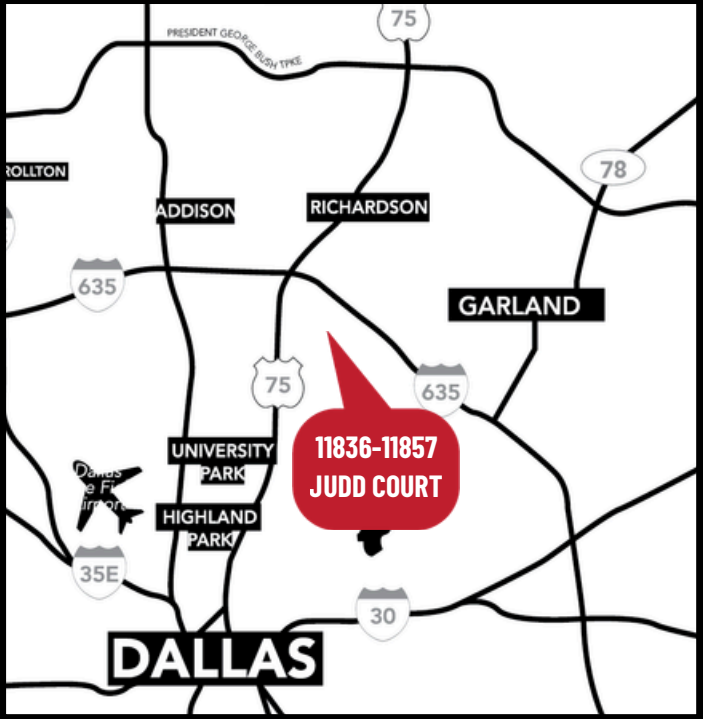


FOREST GREEN BUSINESS PARK

FOR LEASE • 1,775 SF – 8,650 SF

11836-11857 JUDD COURT
DALLAS, TEXAS 75243



ALEX BRYAN
972.965.2878
alex@richyoungcompany.com

GARRETT GOLDSTEIN
214.364.0674
garrett@richyoungcompany.com

FOREST GREEN BUSINESS PARK

FOR LEASE • 1,775 SF – 8,650 SF

ADDRESS:

- 11836 Judd Ct, Dallas, TX 75243 (Bldg 300)
- 11837 Judd Ct, Dallas, TX 75243 (Bldg 100)
- 11857 Judd Ct, Dallas, TX 75243 (Bldg 200)

Property Highlights:

TOTAL PROJECT: 106,976 SF

AVAILABLE SF: 1,000-4,000 SF

CLEAR HEIGHT: 12'-14'

LOADING: Grade Level

PARKING: +/- 3.5/1,000 SF

ZONING: Industrial/Office

Updated Suites, Move-in Ready

Three (3) building complex for office/showroom,
service center and warehouse

Available Spaces:

11836 Judd Court

Suite 304B - 1,825 SF

Suite 304C - 3,600 SF

Suite 304D - 3,225 SF

Suite 328 - 1,800 SF

Suite 338C - 1,775 SF*

Suite 316 - 1,800 SF

Suite 338E - 2,160 SF

Suite 324 - 1,800 SF

11857 Judd Court

Suite 218 - 1,838 SF

Suite 204 - 1,750 SF

ALEX BRYAN

972.965.2878

alex@richyoungcompany.com



FOREST GREEN BUSINESS PARK

FOR LEASE • 1,775 SF – 8,650 SF



ALEX BRYAN
972.965.2878
alex@richyoungcompany.com



FOREST GREEN BUSINESS PARK

FOR LEASE • 1,775 SF – 8,650 SF



ALEX BRYAN
972.965.2878
alex@richyoungcompany.com

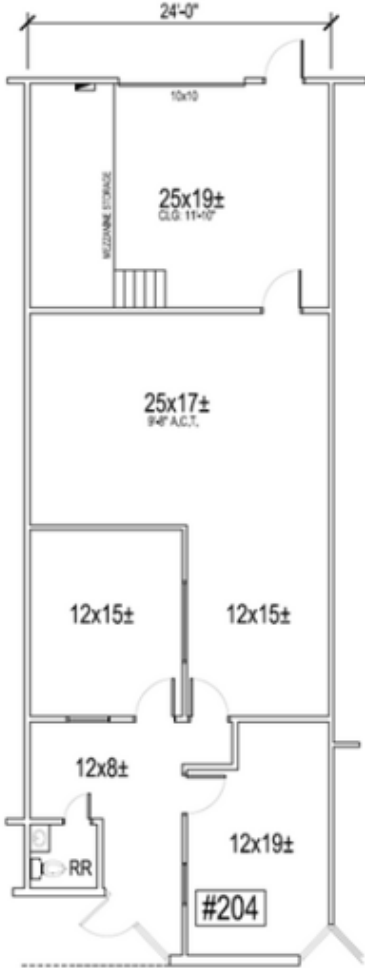


FOREST GREEN BUSINESS PARK

FOR LEASE • 1,775 SF – 8,650 SF

SUITE 204

SIZE: 1,750 SF



ALEX BRYAN
972.965.2878
alex@richyoungcompany.com

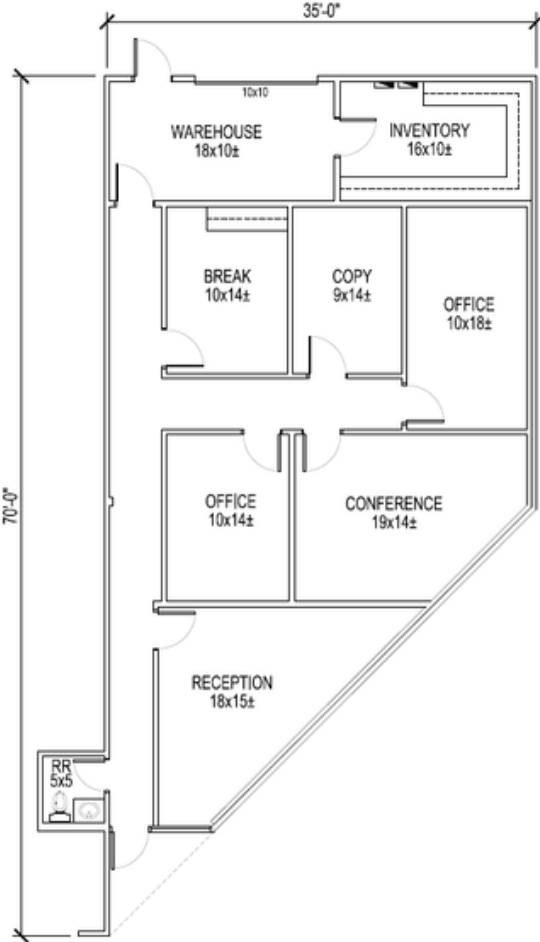


FOREST GREEN BUSINESS PARK

FOR LEASE • 1,775 SF – 8,650 SF

SUITE 218

SIZE: 1,838 SF



ALEX BRYAN
972.965.2878
alex@richyoungcompany.com

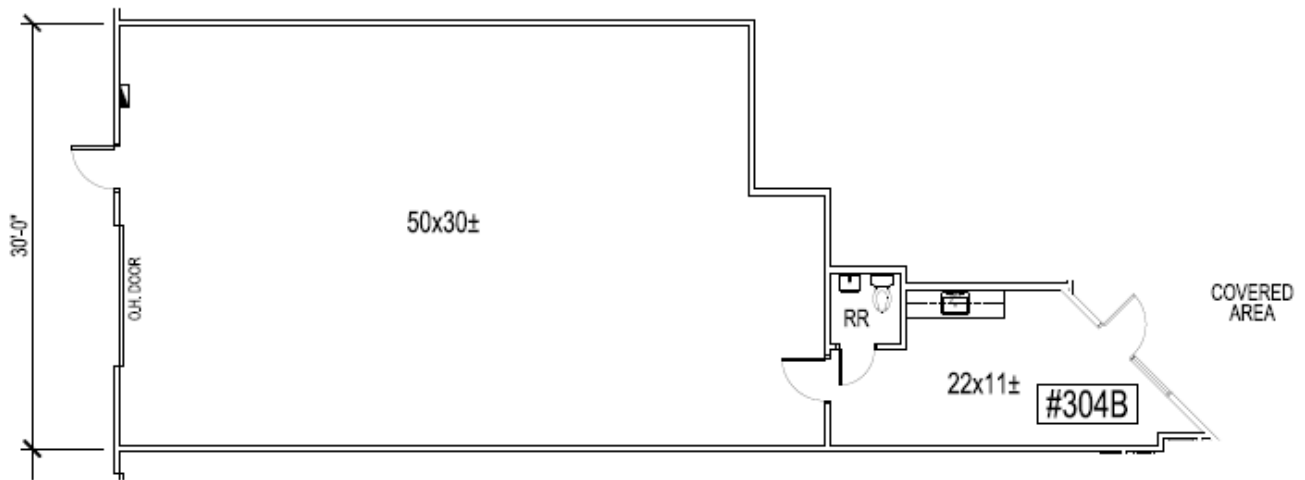


FOREST GREEN BUSINESS PARK

FOR LEASE • 1,775 SF – 8,650 SF

SUITE 304B

SIZE: 1,825 SF



ALEX BRYAN

972.965.2878

alex@richyoungcompany.com

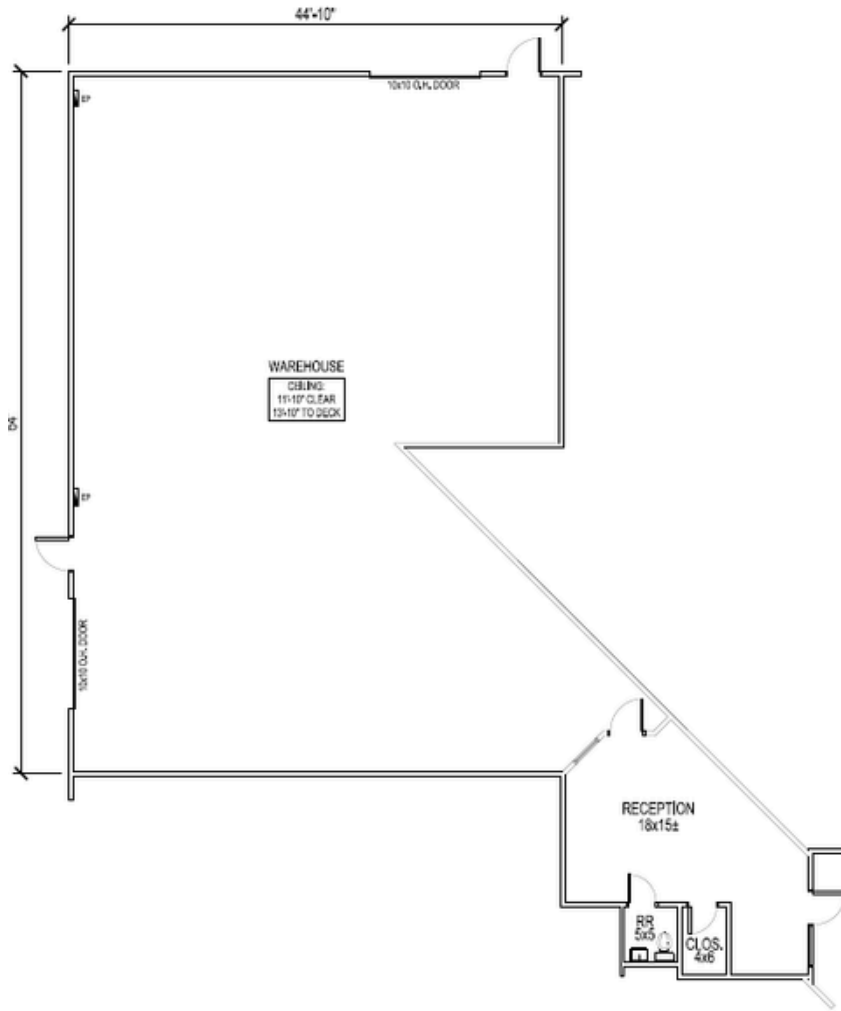


FOREST GREEN BUSINESS PARK

FOR LEASE • 1,775 SF – 8,650 SF

SUITE 304C

SIZE: 3,225 SF



ALEX BRYAN
972.965.2878
alex@richyoungcompany.com

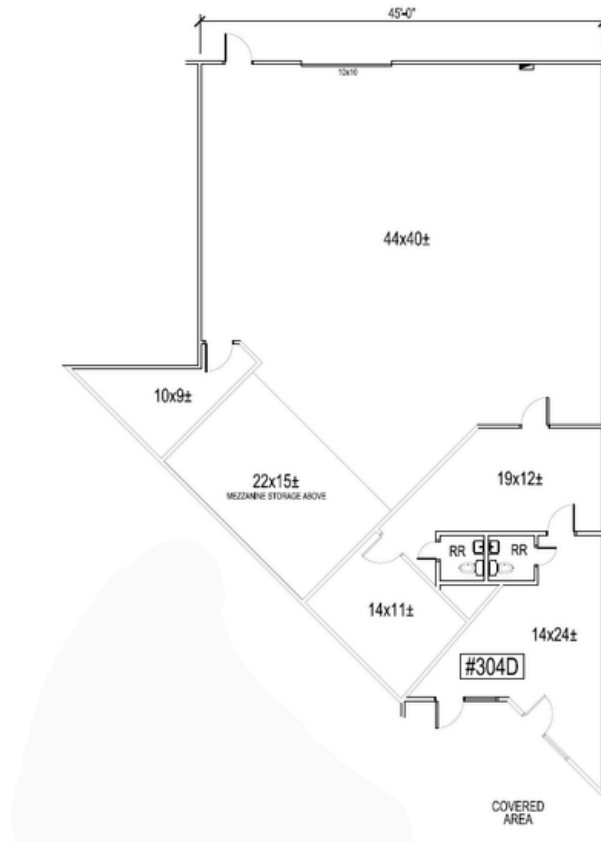


FOREST GREEN BUSINESS PARK

FOR LEASE • 1,775 SF – 8,650 SF

SUITE 304D

SIZE: 3,225 SF



ALEX BRYAN
972.965.2878
alex@richyoungcompany.com

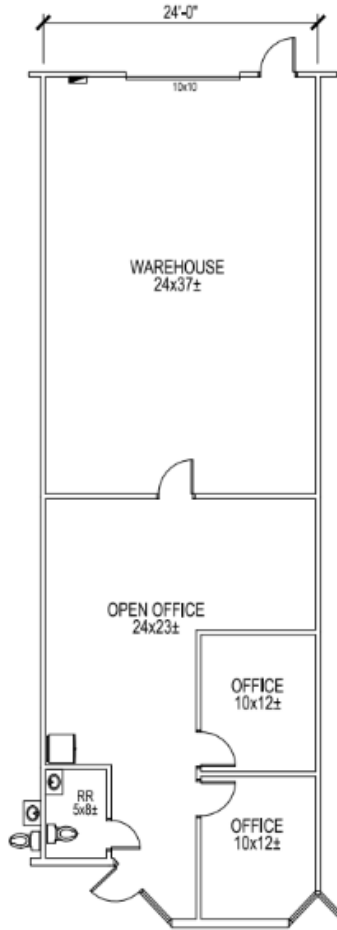


FOREST GREEN BUSINESS PARK

FOR LEASE • 1,775 SF – 8,650 SF

SUITE 316

SIZE: 1,800 SF



ALEX BRYAN
972.965.2878
alex@richyoungcompany.com

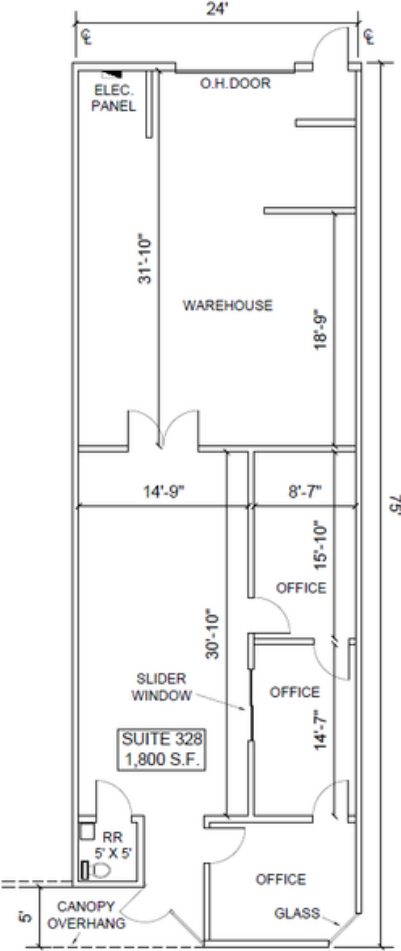


FOREST GREEN BUSINESS PARK

FOR LEASE • 1,775 SF – 8,650 SF

SUITE 328

SIZE: 1,800 SF



ALEX BRYAN
972.965.2878
alex@richyoungcompany.com



FOREST GREEN BUSINESS PARK

FOR LEASE • 1,775 SF – 8,650 SF

SUITE 324

SIZE: 1,800 SF



ALEX BRYAN
972.965.2878
alex@richyoungcompany.com



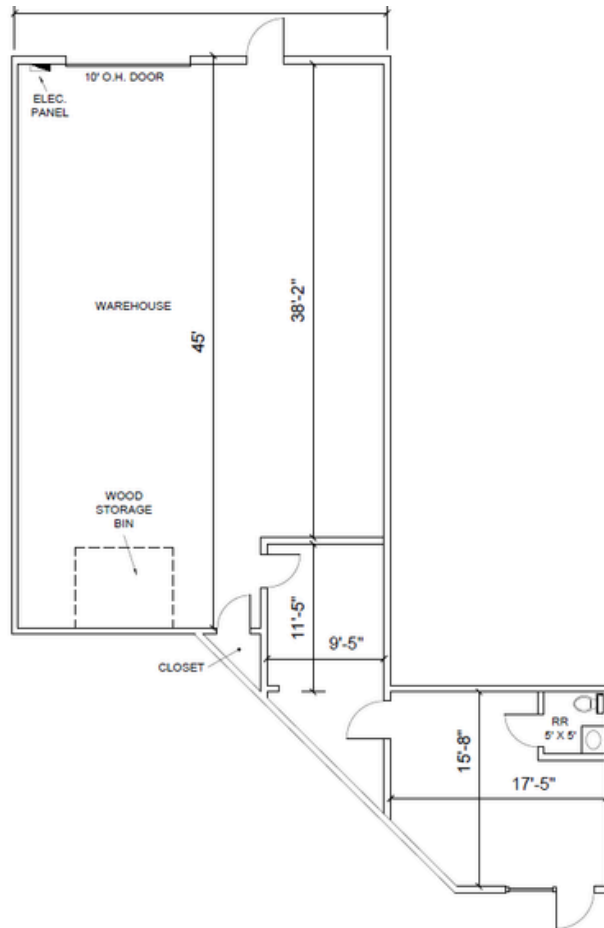
FOREST GREEN BUSINESS PARK

FOR LEASE • 1,775 SF – 8,650 SF

SUITE 338C

SIZE: 1,775 SF

100% HVAC



ALEX BRYAN
972.965.2878
alex@richyoungcompany.com

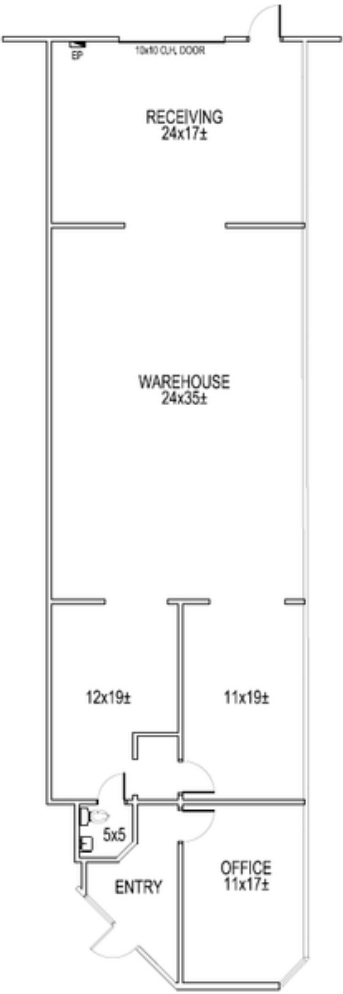


FOREST GREEN BUSINESS PARK

FOR LEASE • 1,775 SF – 8,650 SF

SUITE 338E

SIZE: 2,160 SF



ALEX BRYAN
972.965.2878
alex@richyoungcompany.com

