

335 Hoffer Drive

Office Space For Lease

335 Hoffer Drive
Regina, Saskatchewan
www.cbre.ca

Professional Office Space Ready for Occupancy



Office | For Lease

335 Hoffer Drive | Regina, SK

For Lease

Location Details

This modern 4,331 SF office space is located in Regina's top industrial area and is fully built out with boardrooms, dedicated IT space, and an efficient, move in ready layout. The premises offer ample parking and strong connectivity to major routes, including Park Street and Ring Road. Delivered on a triple net basis, the space provides a practical, ready to operate environment for businesses seeking a well located and functional office solution.



Property Details

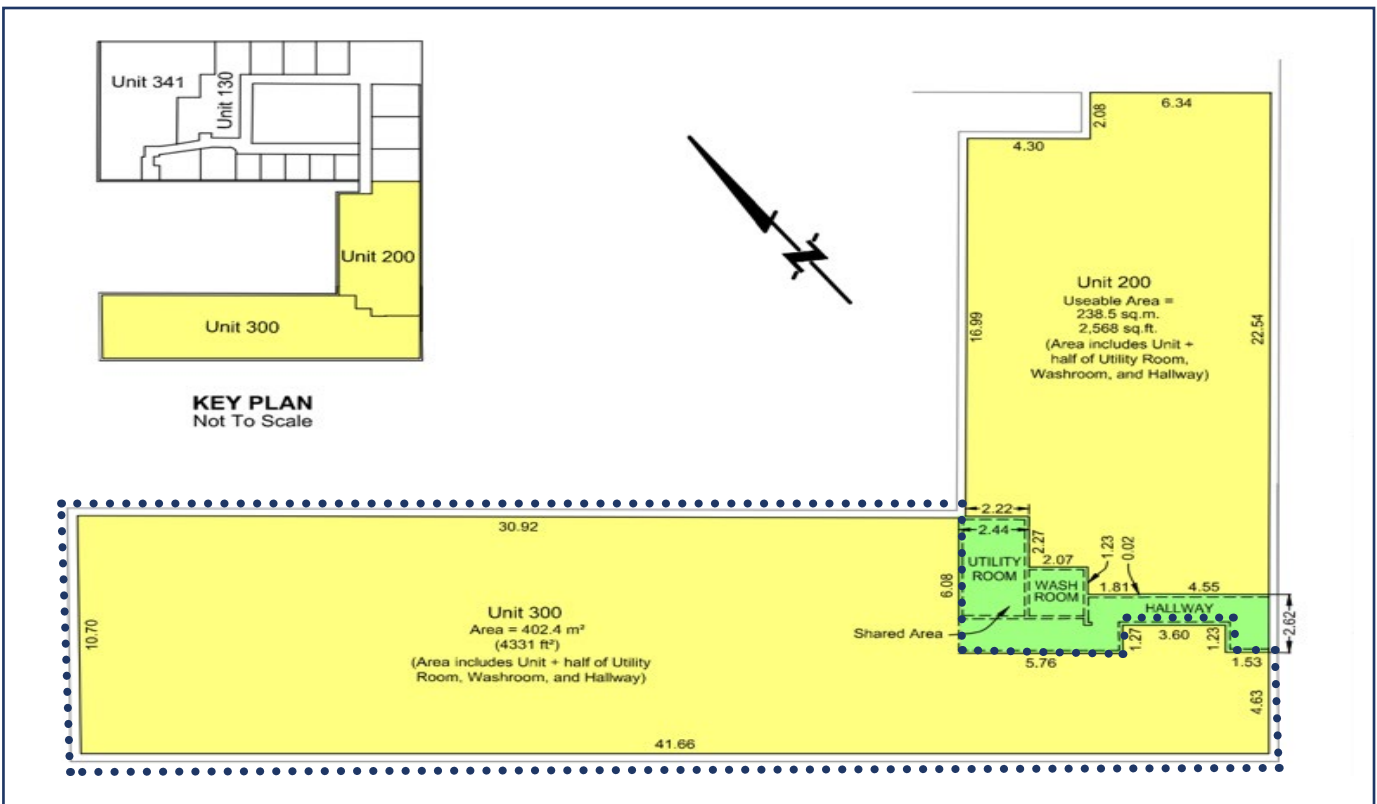
- + **Unit:** 300
- + **Unit Size:** 4,331 SF
- + **Parking:** On-Site, Ample Spaces
- + **Availability:** March 1st, 2026
- + **Net Rent:** \$15.00 PSF
- + **Opp Costs:** \$11.80 PSF



Office | For Lease

335 Hoffer Drive | Regina, SK

For Lease



Contact Us

Walker Moulding
Associate Vice President
+1 306 501 0609
walker.moulding@cbre.com

Erik Mehlsen
Sales Associate
+1 306 539 9754
erik.mehlsen@cbre.com

Mariah Taylor-Mackin
Sales Associate
+1 306 515 3239
mariah.taylormackin@cbre.com

© 2026 CBRE, Inc. All rights reserved. This information has been obtained from sources believed reliable, but has not been verified for accuracy or completeness. You should conduct a careful, independent investigation of the property and verify all information. Any reliance on this information is solely at your own risk. CBRE and the CBRE logo are service marks of CBRE, Inc. All other marks displayed on this document are the property of their respective owners, and the use of such logos does not imply any affiliation with or endorsement of CBRE. Photos herein are the property of their respective owners. Use of these images without the express written consent of the owner is prohibited.