

# FOR SALE



A **Varco** REAL ESTATE PROJECT

## HIGHLIGHTS

- ▶ Strategically positioned in the center of San Antonio's most desirable market
- ▶ Surrounded by retail stores, restaurants and medical facilities within a 1-mile radius
- ▶ Total area 23,448 sq.ft.  
103 parking spaces
- ▶ Across from Methodist Hospital
- ▶ Easy access to HWY 281 and HWY 1604

## TRAFFIC COUNT

- US Highway 281: 97,394
- N. Loop 1604: 75,698
- Sonterra Blvd.: 20,435
- Agora Palms Dr.: 14,000

The information contained herein was obtained from sources deemed reliable; however, Origo Works makes no guaranties, warranties or representations to the completeness or accuracy thereof. The presentation of this real estate information is subject to errors; omissions; change of price; prior sale or lease; or withdrawal without notice.



SCHOOL

🕒 3 min

🚗 0.9 mi



HOSPITAL

🕒 2 min

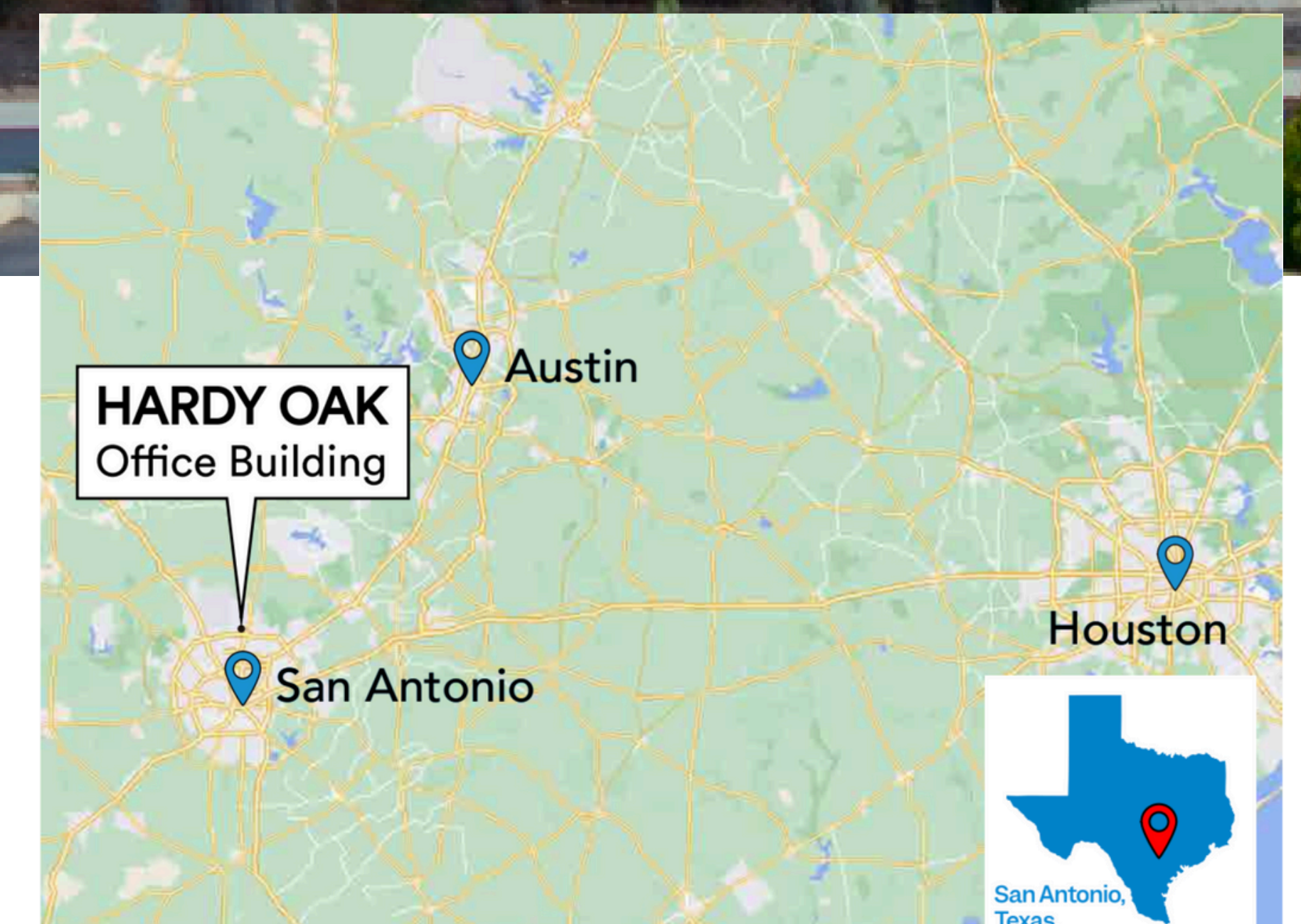
🚗 0.2 mi



AIRPORT

🕒 13 min

🚗 14.17 mi



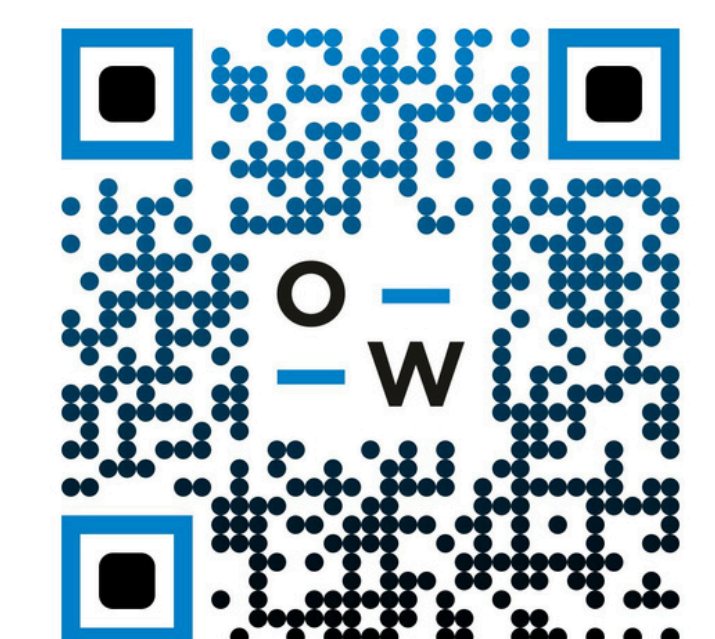
**18911 Hardy Oak Blvd, San Antonio, TX 78258**

Coordinates: 29.6183, -98.4767



origoworks.com

956 388 1007



# FOR SALE

18911 Hardy Oak Blvd, San Antonio, TX 78258

Coordinates: 29.6183, -98.4767

A **Varco** REAL ESTATE PROJECT

**Total SQ.FT.**

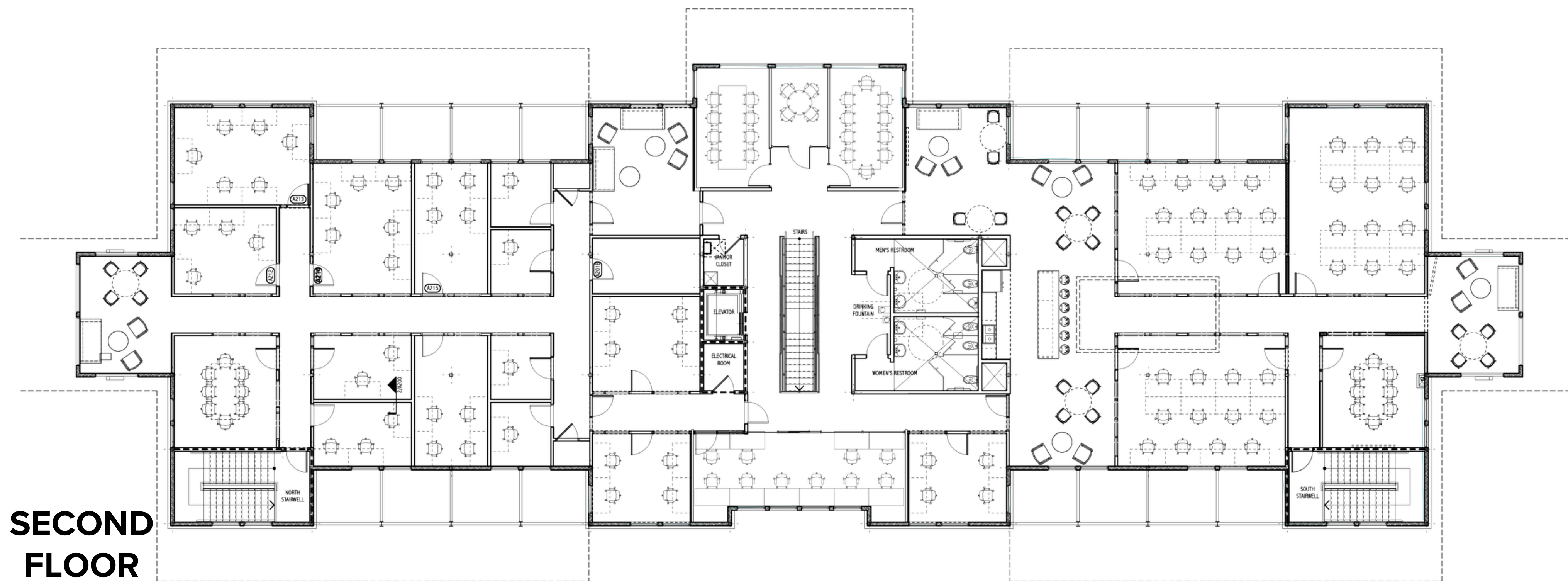
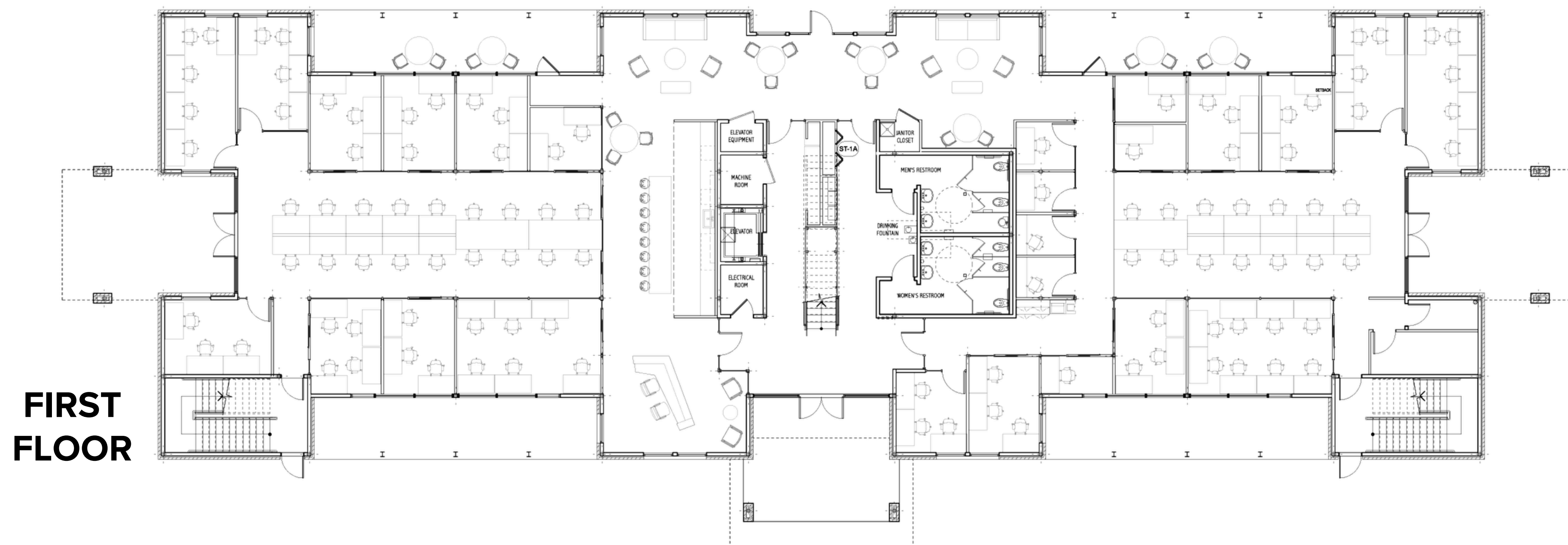
• 23,448

**Land Area**

• 2.43 AC

**Parking Spaces**

• 103



[origoworks.com](http://origoworks.com)

**REACH  
OUT FOR  
MORE INFO**

**Tomi Hajduk**  
[thajduk@origoworks.com](mailto:thajduk@origoworks.com)

**Alberto Villarreal**  
[avillarreal@origoworks.com](mailto:avillarreal@origoworks.com)

**Matthew Lopez**  
[mlopez@origoworks.com](mailto:mlopez@origoworks.com)

**Office Number**  
956 338 1007

222 N. Expressway,  
Suite 300  
Brownsville, Texas