

# 27525 NEWHALL RANCH ROAD, UNIT 7 VALENCIA CA 91355

**FOR LEASE – 5,524 SF**



**EXCLUSIVELY LISTED BY:**

**Chris Jackson**

CEO  
d: 818.933.2368  
cjackson@naicapital.com  
Cal DRE Lic #01255538

**Todd Lorber**

Executive Vice President  
d: 818.933.2376  
tlorber@naicapital.com  
Cal DRE Lic #01014637

**Eric Seidenglanz**

Senior Vice President  
d: 818.815.2426  
eseidenglanz@naicapital.com  
Cal DRE Lic #01975684

**NAI Capital - Encino**

15821 Ventura Blvd., Suite 320  
Los Angeles, CA 91436  
d: 818.905.2400  
www.naicapital.com



# PROPERTY HIGHLIGHTS

27525 NEWHALL RANCH ROAD, VALENCIA CA 91355

Unit Size	5,524
Lease Rate	\$7,182.00
Lease Rate /Sf	\$1.30 /sf
Operating Expenses	\$2,320.08
Operating Expenses /Sf	0.42 /Sf
Office SF	425
Clear Height	24'
Dock High Doors	One (1)
Ground Level Doors	One (1)
Power	200 Amp; 277/480V; 3 Phase
Parking Spaces	11
Sprinklered	Yes
Possession	1-Jun-26



LEASE RATE/SF  
**\$1.30**



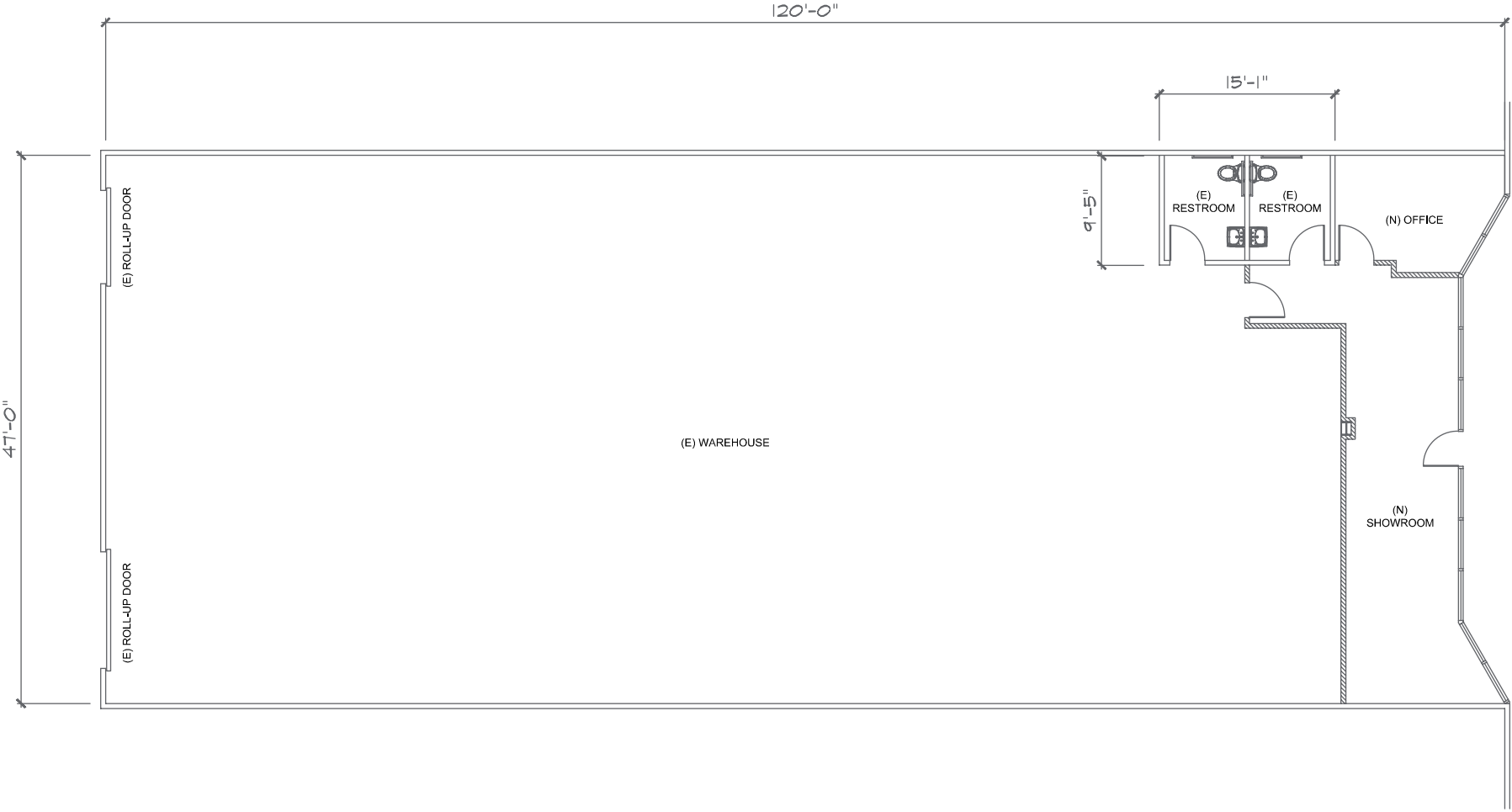
CLEAR HEIGHT  
**24'**



POWER  
**200A, 277/480V,  
3PH**



# FLOOR PLAN



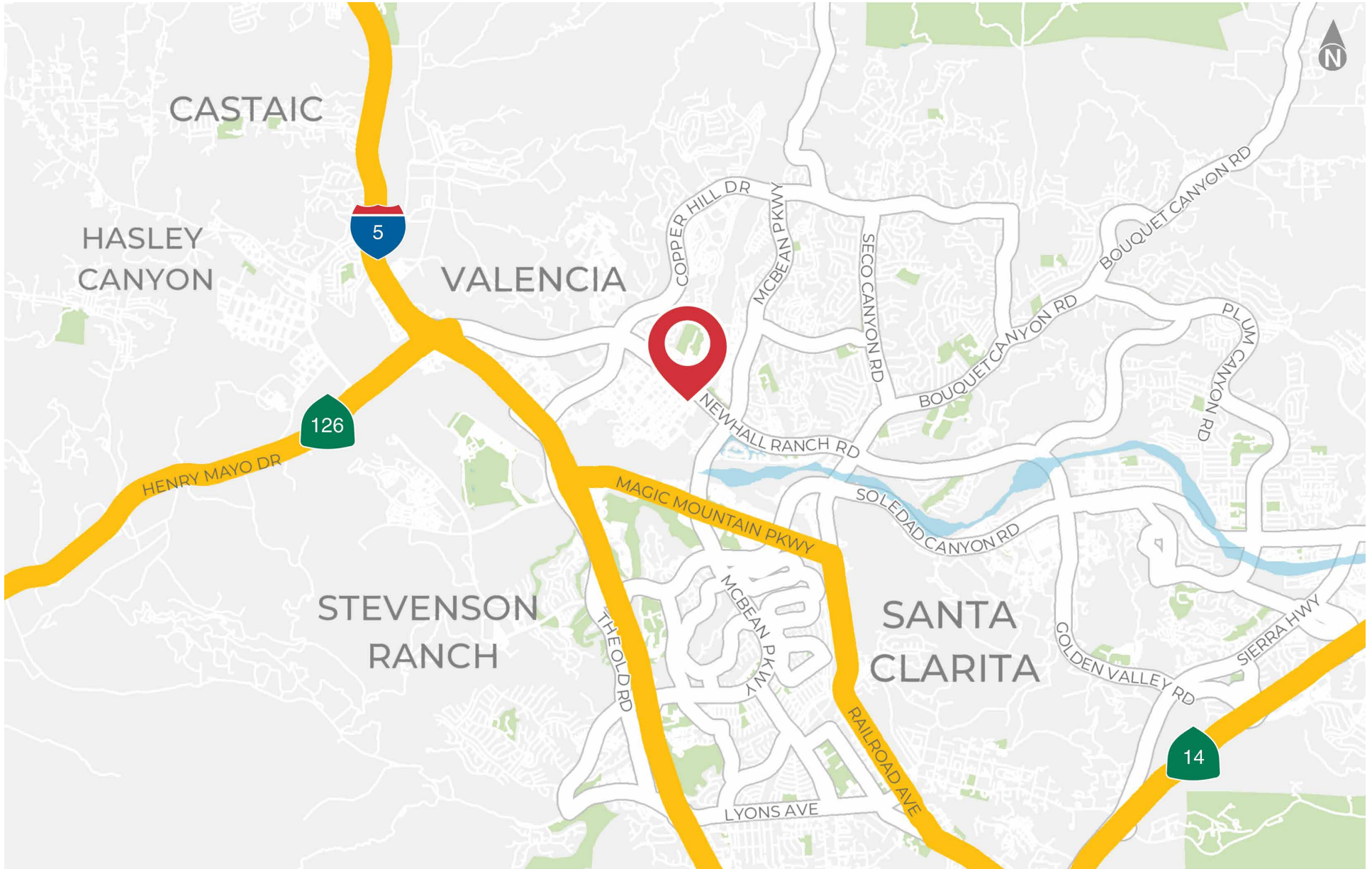
## PROPERTY PHOTOS



## PROPERTY PHOTOS



# LOCATION MAP



# LOCATION MAP



# AERIAL MAP



# AERIAL MAP



# 27525 NEWHALL RANCH ROAD, UNIT 7 VALENCIA CA 91355

**FOR LEASE – 5,524 SF**



© NAI Capital Commercial, Inc. Content in this document may include AI generated or altered text, images and/or analysis. No warranty, express or implied, is made as to the accuracy of the information contained herein. This information is submitted subject to errors, omissions, change of price, rental or other conditions, withdrawal without notice, and is subject to any special listing conditions imposed by our principals. Cooperating brokers, buyers, tenants and other parties who receive this document should not rely on it, but should use it as a starting point of analysis, and should independently confirm the accuracy of the information contained herein through a due diligence review of the books, records, files and documents that constitute reliable sources of the information described herein. Unedited images viewable at [naicapital.com](http://naicapital.com) | Cal DRE Lic #02130474

## EXCLUSIVELY LISTED BY:

### Chris Jackson

CEO  
d: 818.933.2368  
[cjackson@naicapital.com](mailto:cjackson@naicapital.com)  
Cal DRE Lic #01255538

### Todd Lorber

Executive Vice President  
d: 818.933.2376  
[tlorber@naicapital.com](mailto:tlorber@naicapital.com)  
Cal DRE Lic #01014637

### Eric Seidenglanz

Senior Vice President  
d: 818.815.2426  
[eseidenglanz@naicapital.com](mailto:eseidenglanz@naicapital.com)  
Cal DRE Lic #01975684

### NAI Capital - Encino

15821 Ventura Blvd., Suite 320  
Los Angeles, CA 91436  
d: 818.905.2400  
[www.naicapital.com](http://www.naicapital.com)

**NAI**Capital  
COMMERCIAL REAL ESTATE SERVICES, WORLDWIDE