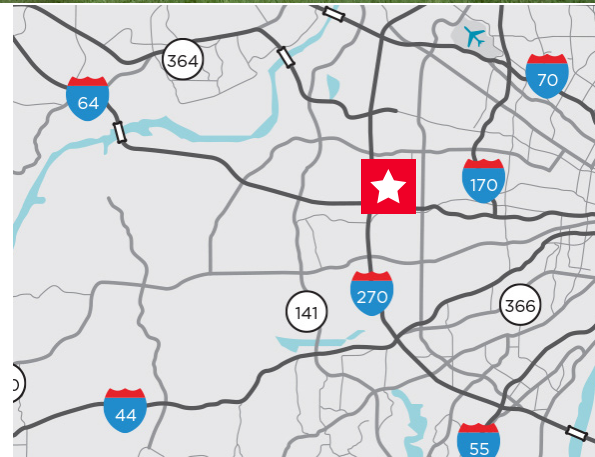



0.675 Acres

Contact broker for additional information

Property Highlights

- Rare opportunity for high profile drive-thru in Creve Coeur
- Ability to develop Multi-Story Building
- Situated at the busy intersection of Olive Boulevard and N. New Ballas Road, just east of I-270
- Olive Boulevard serves as the main retail corridor for Creve Coeur and a major East-West artery for West St. Louis County
- Shadow-tenants include: Aldi, FedEx Kinko's, St. Luke's Open MRI, and Vincent's Jewelers
- Located directly adjacent to the 1.3 million square foot CityPlace Campus, which is comprised of Class A office, medical, and retail space



Demographics

	1 mile	3 miles	5 miles
Population	9,991	57,049	155,326
Avg Income	\$118,413	\$118,582	\$114,049
# of Employees	19,220	91,550	170,190

David Wirth

+1 314 925 2916

david.wirth@cushwake.com

Kyle Pershing

+1 314 236 5471

kyle.pershing@cushwake.com



**CUSHMAN &
WAKEFIELD**

SALE OR FOR LEASE

0.675 Acre

11665 Olive Blvd / Creve Coeur, MO 63141

Site Plan



David Wirth
+1 314 925 2916
david.wirth@cushwake.com

Kyle Pershing
+1 314 236 5471
kyle.pershing@cushwake.com

7700 Forsyth Boulevard, Suite 1210
St. Louis, MO 63105
Main +1 314 862 7100
cushmanwakefield.com

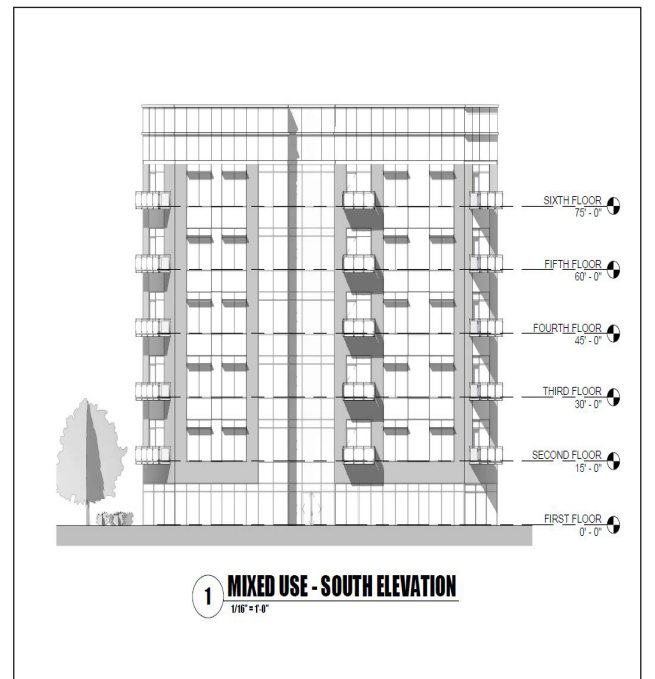
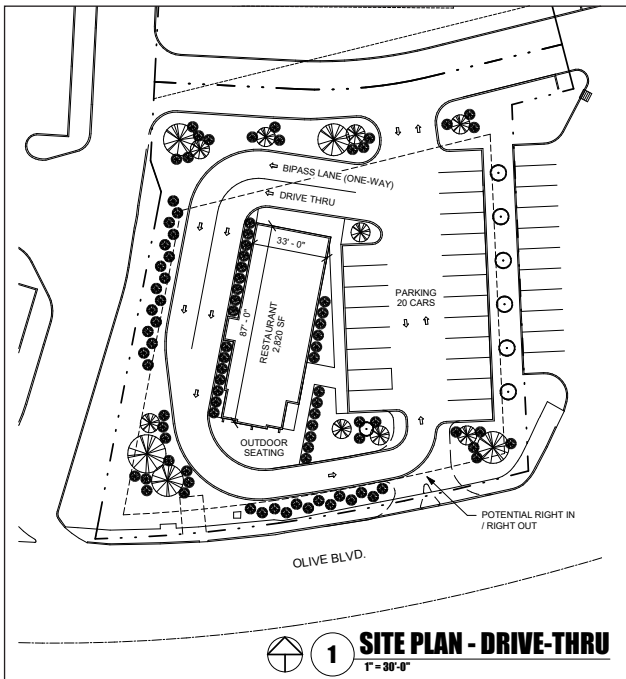
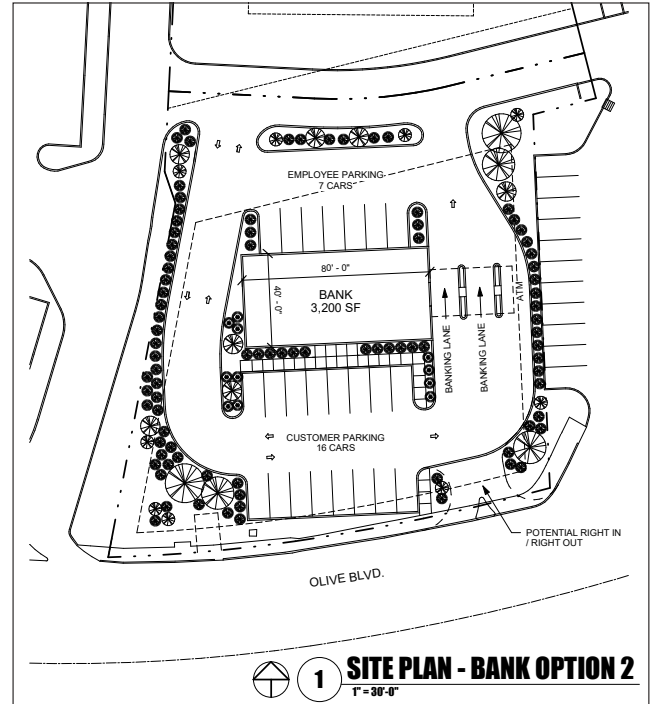
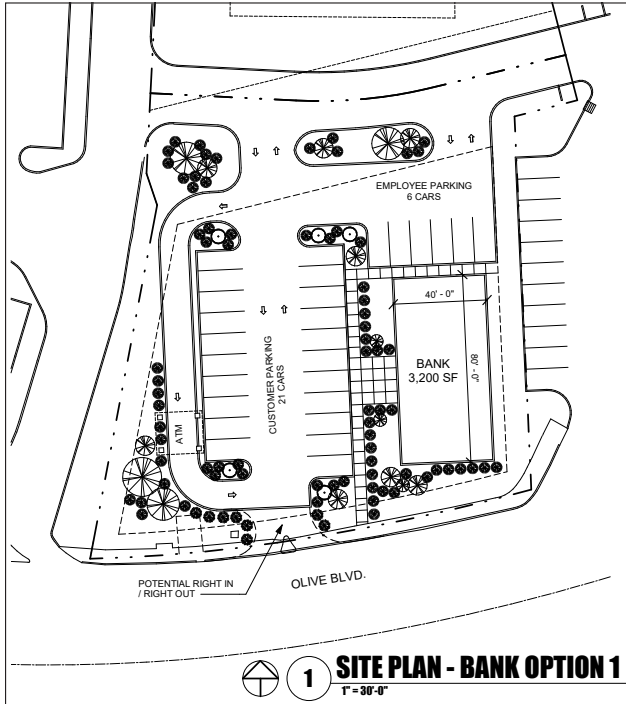


CUSHMAN & WAKEFIELD

FOR LEASE

0.675 Acre/29,383 SF Outlot
11665 Olive Blvd / Creve Coeur, MO 63141

Site Options



David Wirth
+1 314 925 2916
david.wirth@cushwake.com

Kyle Pershing
+1 314 236 5471
kyle.pershing@cushwake.com

7700 Forsyth Boulevard, Suite 1210
St. Louis, MO 63105
Main +1 314 862 7100
cushmanwakefield.com

Photos



Amenities Aerial



David Wirth
+1 314 925 2916
david.wirth@cushwake.com

Kyle Pershing
+1 314 236 5471
kyle.pershing@cushwake.com

7700 Forsyth Boulevard, Suite 1210
St. Louis, MO 63105
Main +1 314 862 7100
cushmanwakefield.com

Traffic Counts - Views Per Day



David Wirth
+1 314 925 2916
david.wirth@cushwake.com

Kyle Pershing
+1 314 236 5471
kyle.pershing@cushwake.com

7700 Forsyth Boulevard, Suite 1210
St. Louis, MO 63105
Main +1 314 862 7100
cushmanwakefield.com