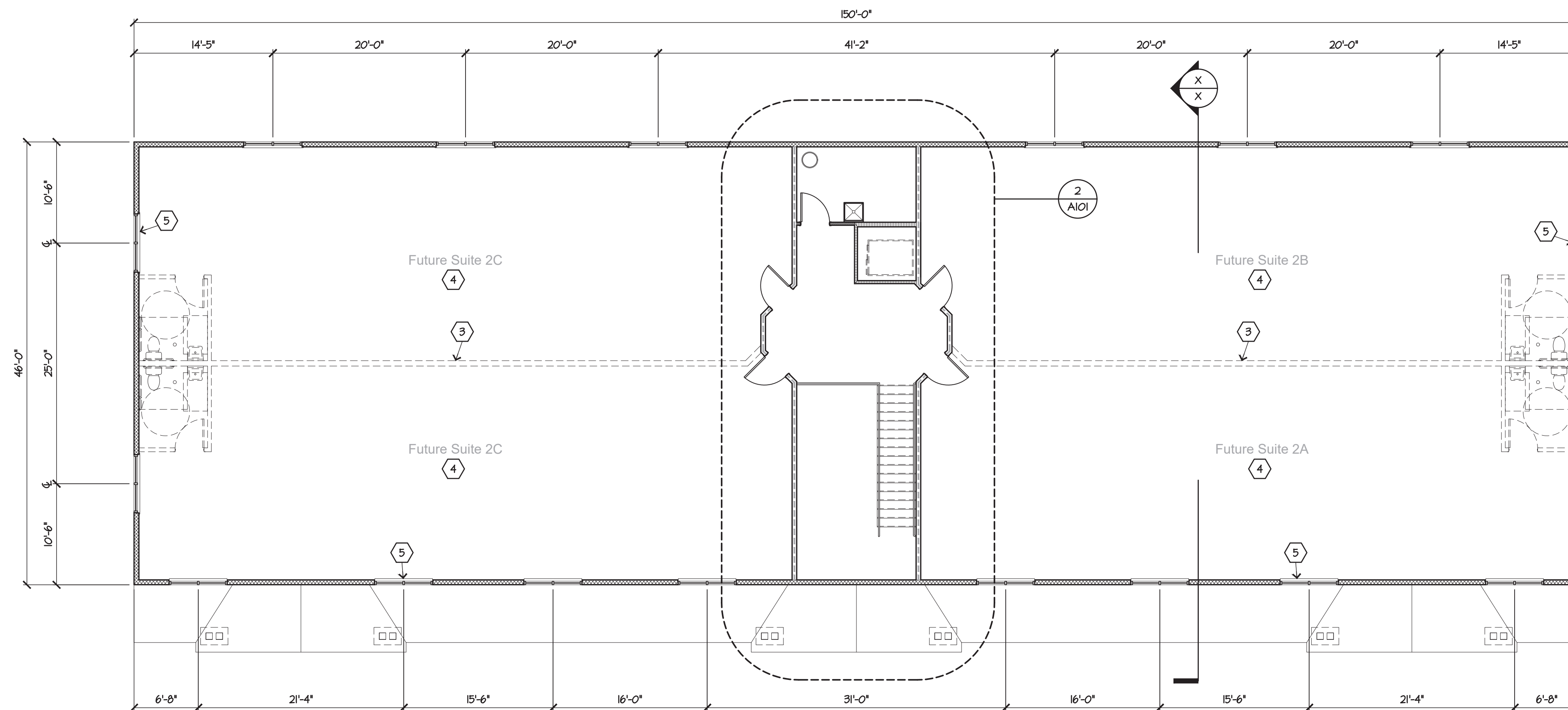
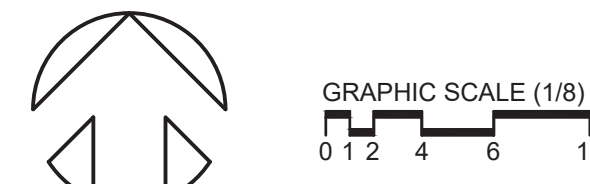
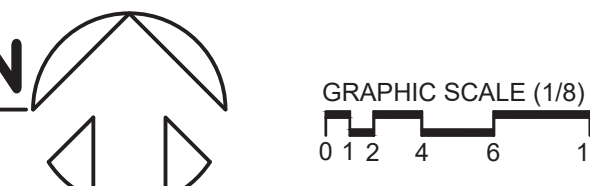


1 FIRST FLOOR PLAN
A100 1/8" = 1'-0"



2 SECOND FLOOR PLAN
A100 1/8" = 1'-0"



GENERAL NOTES

- IF PRINTED SHEET IS LESS THAN 36 IN. WIDE x 24 IN. HIGH USE GRAPHIC SCALE.
- REFER TO STRUCTURAL DRAWINGS FOR ADDITIONAL INFORMATION ASSOCIATED WITH THIS DRAWING.
- REFER TO ENLARGED LAYOUT FLOOR PLAN, I/A102, FOR DIMENSIONAL AND ADDITIONAL INFORMATION ASSOCIATED WITH THIS DRAWING.

PLAN NOTES

- 8 IN. (NOM.) CONCRETE MASONRY UNIT (CMU) PILASTER BASE COVERED WITH MANUFACTURED (CULTURED) STONE VENEER AND GAP WITH E.L.F.S. BASE TRIM, AND (4) 8x8 (NOM.) HEAVY TIMBER (H.T.) CEDAR WOOD POSTS, REFER TO EXTERIOR ELEVATIONS, TYPICAL.
- 1-STORY PORCH ROOF EDGE ABOVE SHOWN DASHED, TYPICAL, REFER TO EXTERIOR ELEVATIONS AND ROOF PLAN.
- FUTURE CONSTRUCTION (WALLS AND RESTROOMS) FOR FUTURE LESSEE SPACES SHOWN DASHED, TYPICAL.
- IMPROVEMENT (BUILD-OUT) OF ANY LEASE REQUIRES BUILDING DEPARTMENT PLAN APPROVAL / PERMIT PRIOR TO STARTING ANY WORK.
- INSTALL WINDOW STOOL EVERY WINDOW OPENING, TYPICAL.

WALL CONSTRUCTION LEGEND

- EXTERIOR WALL: 2x6 (NOM.) WOOD STUD FRAMING AT 16 IN. O.C. WITH CULTURED STONE VENEER WATER-TABLE AND VINYL SIDING OVER 1/2 IN. PLYWOOD COVERED WITH INFILTRATION BARRIER; STUD CAVITIES HAVE 6 IN. (NOM.) R-19.0 MIN. THERMAL FIBER; INTERIOR COVERED WITH 6 MIL POLYETHYLENE MOISTURE BARRIER AND 5/8 IN. TYPE "X" GYPSUM BOARD
- INTERIOR WALL: 2x6 (NOM.) WOOD STUD FRAMING AT 16 IN. O.C.; COVER WITH 5/8 IN. TYPE "X" GYPSUM BOARD EACH SIDE
- INTERIOR WALL: 2x6 (NOM.) WOOD STUD FRAMING AT 16 IN. O.C.; STUD CAVITIES HAVE 4 IN. (NOM.) SOUND ATTENUATION BATT (S.A.B.); COVER WITH 5/8 IN. TYPE "X" GYPSUM BOARD EACH SIDE
- INTERIOR WALL: 2x4 (NOM.) WOOD STUD FRAMING AT 16 IN. O.C.; COVER WITH 5/8 IN. TYPE "X" GYPSUM BOARD EACH SIDE
- INTERIOR WALL: 1-HOUR FIRE-RESISTANCE-RATED SEPARATION WALL, U. L. DESIGN UB05, 2x6 (NOM.) WOOD STUD FRAMING AT 16 IN. O.C.; STUD CAVITIES HAVE 4 IN. (NOM.) S.A.B.; COVER WITH 5/8 IN. TYPE "X" GYPSUM BOARD EACH SIDE

New Two Story Lease Spaces Building B for:
RISER PROPERTIES, LLC.
2658 North Columbus Street
Lancaster, Ohio 43130

VPL
ARCHITECTS
426 EAST MAIN STREET
LANCASTER, OHIO 43130
phone: (740) 654-4048
facsimile: (740) 654-3009

Copyright - 2021
All drawings are and shall be the property of VPL Architects, Inc. and may not be used, duplicated, or altered without the written consent of the Architect.

COMMISSION No.
P2110

ISSUE	MARK	DATE
PHASED APPROVAL	No. 1	08/04/2021
PROGRESS	No. 1	04/08/2021

DRAWN BY: AB, rjp



Nicholas J. Palladino
License No. 12669
Expiration Date: December 31, 2021

FIRST FLOOR PLAN
DRAWING NUMBER
A100

