

BIG LAKE, REAGAN COUNTY DEVELOPMENT OPPORTUNITY



±8.423 ACRES

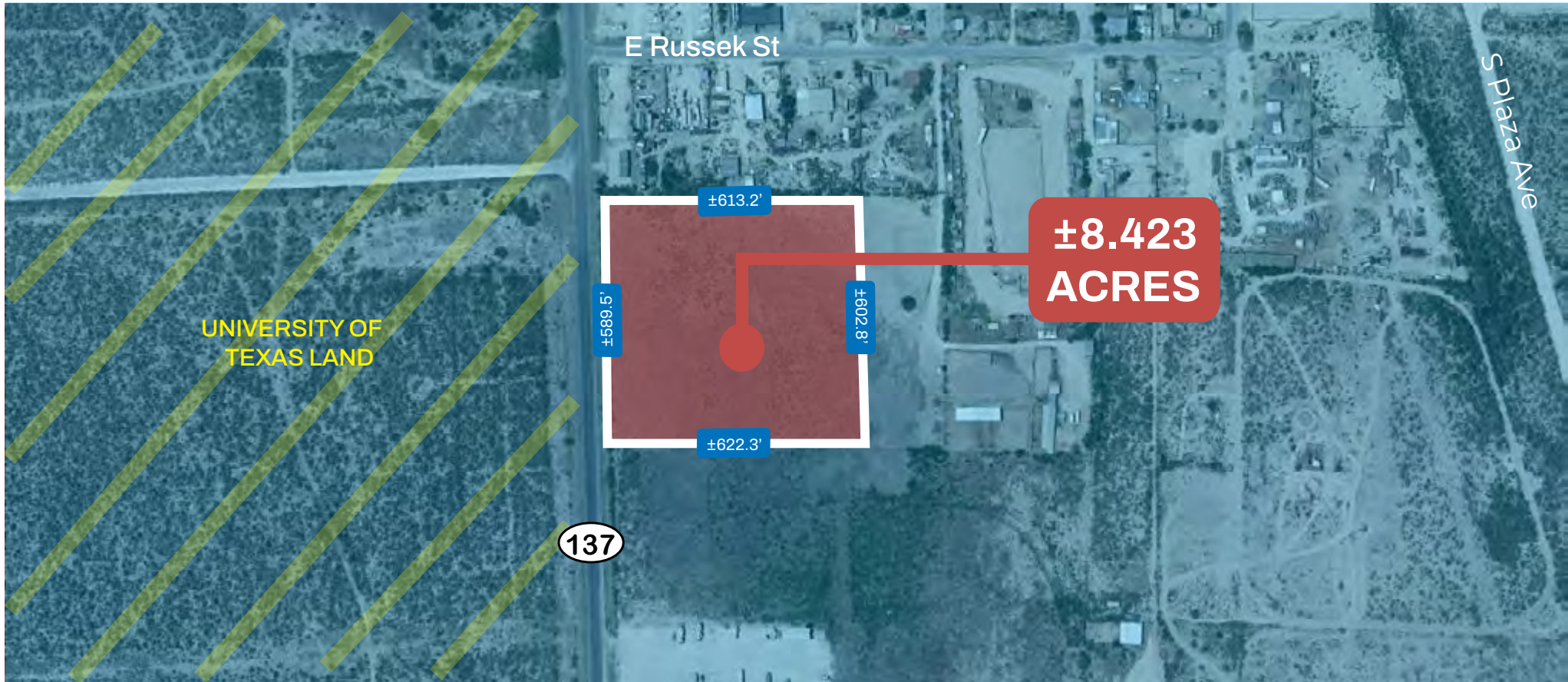
**FOR SALE, BUILD-TO-SUIT, OR
JOINT VENTURE**

FOR MORE INFORMATION CONTACT:

Jeff G. Peden, SIOR
Executive Managing Director
713-231-1640
Jeff.Peden@transwestern.com

 Transwestern

LAND FOR SALE, BUILT-TO-SUIT, OR JOINT VENTURE



±8.423 ACRES

FOR SALE, BUILD-TO-SUIT, OR
JOINT VENTURE

FOR MORE INFORMATION CONTACT:

Jeff G. Peden, SIOR
Executive Managing Director
713-231-1640
Jeff.Peden@transwestern.com

 Transwestern

PRIME LOCATION IN WEST TEXAS' PERMIAN BASIN



±8.423 ACRES

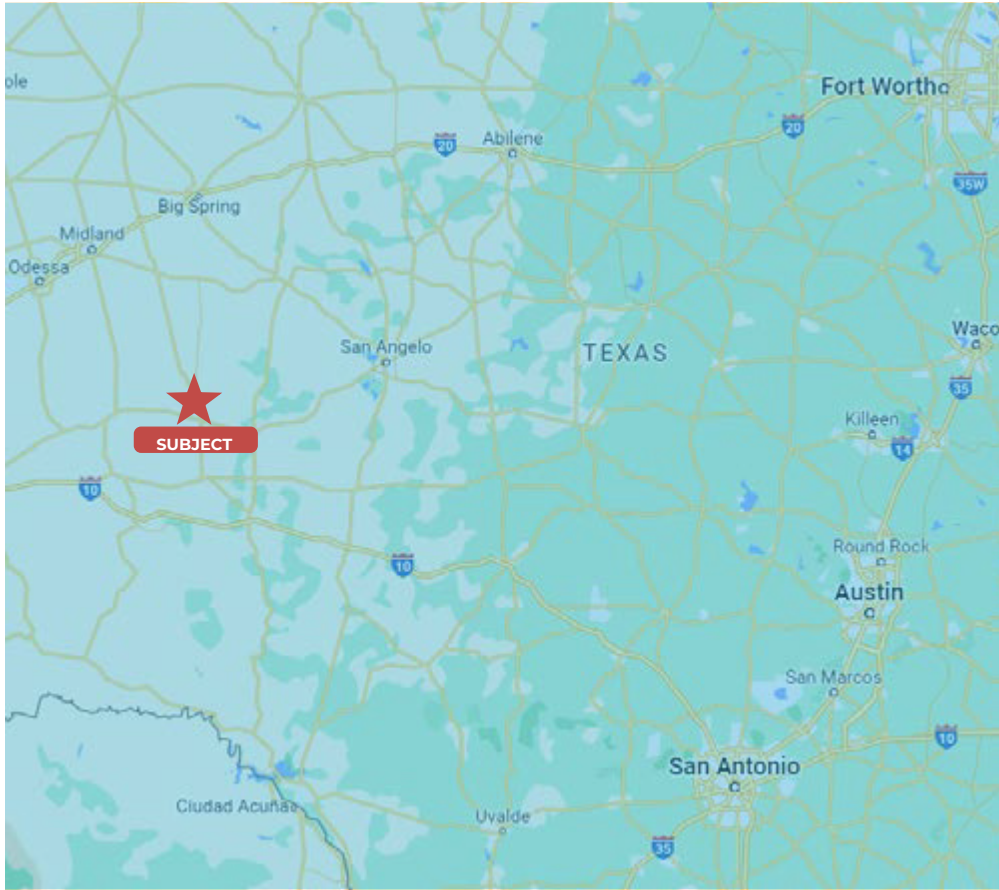
**FOR SALE, BUILD-TO-SUIT, OR
JOINT VENTURE**

FOR MORE INFORMATION CONTACT:

Jeff G. Peden, SIOR
Executive Managing Director
713-231-1640
Jeff.Peden@transwestern.com

 Transwestern

PROPERTY HIGHLIGHTS



Location

Big Lake, Texas

Size

±8.423 Acres

Type

Commercial Land

County

Reagan

Submarket

Texas West Area

Asking Price

Call Broker

±8.423 ACRES

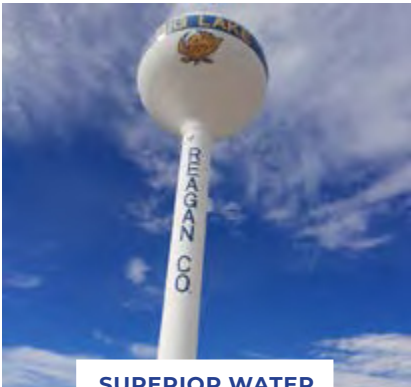
**FOR SALE, BUILD-TO-SUIT, OR
JOINT VENTURE**

FOR MORE INFORMATION CONTACT:

Jeff G. Peden, SIOR
Executive Managing Director
713-231-1640
Jeff.Peden@transwestern.com

 Transwestern

SITES AND ACTIVITIES



**SUPERIOR WATER
SUPPLY**



**REAGAN COUNTY
HIGH SCHOOL**



**JOSH MITCHELL
MEMORIAL PARK**



**SANTA RITA
MONUMENT**



**REAGAN HOSPITAL
DISTRICT**



HICKMAN MUSEUM



**REAGAN COUNTY
ELEMENTARY SCHOOL**



**REAGAN COUNTY
MIDDLE SCHOOL**

±8.423 ACRES

**FOR SALE, BUILD-TO-SUIT, OR
JOINT VENTURE**

FOR MORE INFORMATION CONTACT:

Jeff G. Peden, SIOR
Executive Managing Director
713-231-1640
Jeff.Peden@transwestern.com

 **Transwestern**