

N JOHNSON CITY OFFICE BLDG C

801 Sunset Drive, Building C
Johnson City, TN 37604

Location

Located in Sunset Professional Park in the heart of Johnson City

Available for Lease

Suite 200: 8,921 SF office building (upper level)
\$16.50/SF/year NNN

Highlights

Part of the Sunset Professional Park Condo Association -
Can be used for medical or professional offices

Lobby/waiting area

Reception area with glass pass-through window

13 private offices & 20 semi-private offices

Large board room with adjoining break room

2 small conference rooms

2 restrooms

Server room

Ample parking

Zoned MS-1

Demographics

(2024 Est.)	3 mile	5 mile	10 mile
Population	50,439	84,157	166,265
Median HH Income	\$54,940	\$58,022	\$63,739
Median Age	36.0	38.0	41.6

Contact

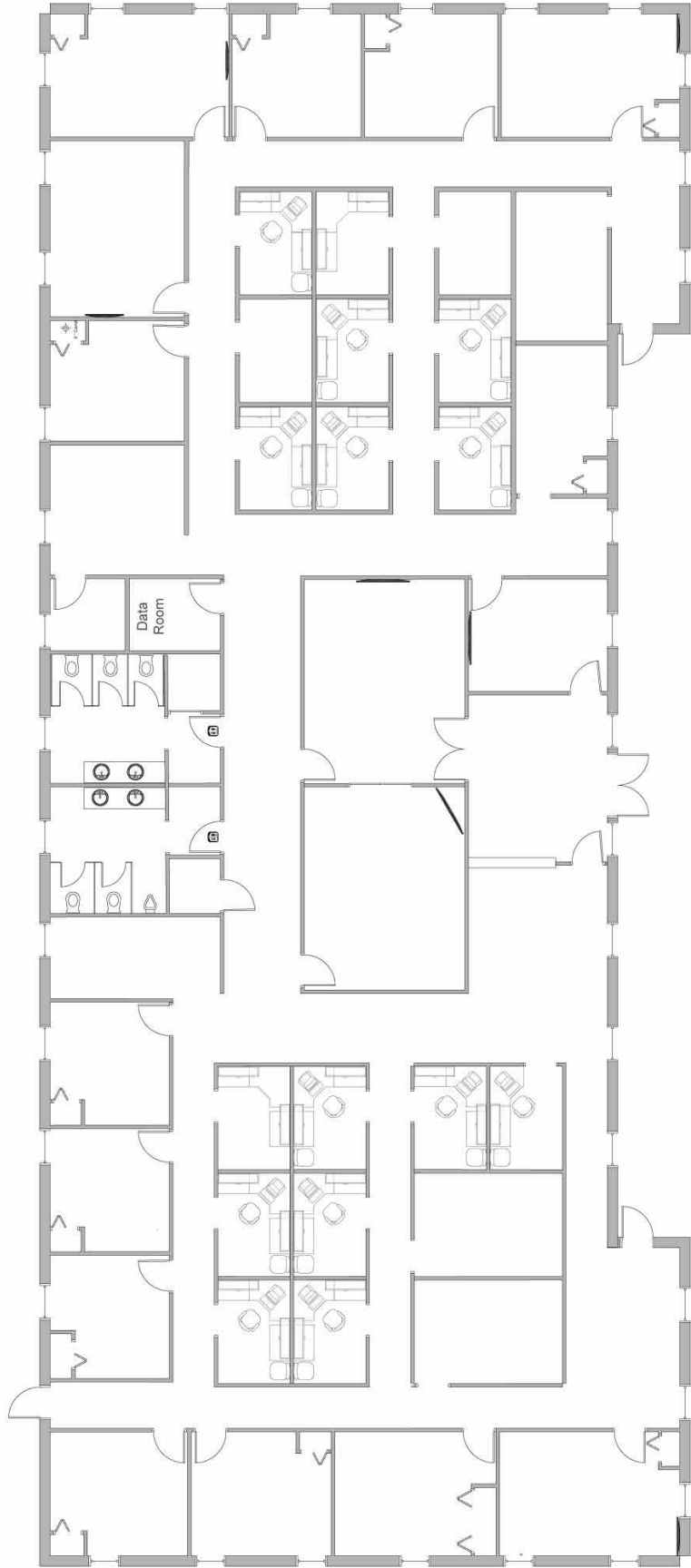
John Speropulos, CCIM, SIOR
john@mitchcox.com

Marc Murphy, CCIM
mmurphy@mitchcox.com

📞 423-282-6582 | 📠 423-282-5903
www.mitchcox.com



Upper Level





State of Franklin
HEALTHCARE ASSOCIATES
Comprehensive Breast Center



Subject

Earl's Barber Shop
Berninalin Stitches
Grassy Valley Homes
RearView Rentals
Best Uniform Center

Sunset Dr

McDonald's

Shell

DUNKIN' DONUTS

Car Crazy
Car Wash

CRANBERRIES
GODD'S
MEDICAL &
ASTHMA SUPPLIES, INC.
Whitney

Knob Creek Rd



MITCH COX
REALTOR, INC.

2304 Silverdale Drive, Suite 200, Johnson City, TN 37601
423-282-6582 (o) 423-282-5903 (f) www.mitchcox.com