

Central Austin Business Park

BUILDING 2: 32,000 SF
9800 Decker Lane, Suite 100, Austin, Texas

BUILDING 2 SPECS

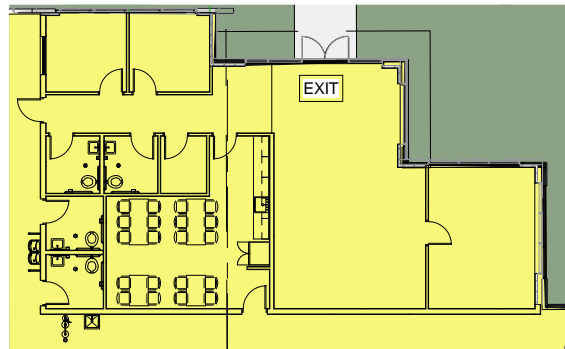
| | |
|----------------|--|
| Total Size | 32,000 SF |
| Office: | ±2,100 SF |
| Loading | Rear Loading |
| Column Spacing | 50' x 52' Typical Bay 60' x 52' Speed Bay |
| Ramps | 1 Grade Level Ramp |
| Building Depth | 210' |
| Sprinklers | ESFR |

32'
Clear
Height

8
Dock High
Doors

60
Parking
Stalls

**Fully Air-Conditioned
Warehouse Space**



OFFICE SPACE: ±2,100 SF

