

2,074 - 4,153 SF RETAIL/OFFICE/MEDICAL



FOR LEASE



Orion Marketplace

1176-1234 S Lapeer Rd
Lake Orion, Michigan 48360

Property Highlights

- Spaces Ready-to-Go for Restaurant, Retail, Office or Medical Office
- Located on Lapeer Road, a Regional Corridor and One of the Most Highly Traveled Roads in the North Oakland County
- New Meijer Concept Across the Street Now Open
- Recently Updated with New Roof and New HVAC Units!
- TI Packages Available
- Brand New Monument Sign with Strong Traffic Counts on Lapeer Rd: 44,897 CPD



Commercial Real Estate Services, Worldwide.

www.naifarberman.com

Gavin Mills

Leasing and Sales Associate | 908.304.4534
mills@farberman.com

Brandon Ben-Ezra

Leasing and Sales Associate | 947.517.6226
ben-ezra@farberman.com

NO WARRANTY, EXPRESS OR IMPLIED, IS MADE AS TO THE ACCURACY OF THE INFORMATION CONTAINED HEREIN. THIS INFORMATION IS SUBMITTED SUBJECT TO ERRORS, OMISSIONS, CHANGE OF PRICE, RENTAL OR OTHER CONDITIONS, WITHDRAWAL WITHOUT NOTICE, AND IS SUBJECT TO ANY SPECIAL LISTING CONDITIONS IMPOSED BY OUR PRINCIPALS, COOPERATING BROKERS, BUYERS, TENANTS AND OTHER PARTIES WHO RECEIVE THIS DOCUMENT SHOULD NOT RELY ON IT, BUT SHOULD USE IT AS A STARTING POINT OF ANALYSIS, AND SHOULD INDEPENDENTLY CONFIRM THE ACCURACY OF THE INFORMATION CONTAINED HEREIN THROUGH A DUE DILIGENCE REVIEW OF THE BOOKS, RECORDS, FILES AND DOCUMENTS THAT CONSTITUTE RELIABLE SOURCES OF THE INFORMATION DESCRIBED HEREIN. LOGOS ARE FOR IDENTIFICATION PURPOSES ONLY AND MAY BE TRADEMARKS OF THEIR RESPECTIVE COMPANIES. NAI Farberman, INC. CA BRE LIC. #01990696.

2,074 - 4,153 SF
RETAIL/OFFICE/MEDICAL



FOR LEASE

SHOPS AT LAKE ORION

TROPICAL SMOOTHIE CAFÉ

BLACK CAT BEANERY

PARLOR DONUTS

H & R BLOCK

SOUL OF INDIA

CHRISTINE M. SAAD, DDS

POLISH NAIL BAR

PHO STREET RESTAURANT

AVOCADO HOUSE CANTINA

NEW ENDS SALON

1176-1236

Monument Signage



Available Space - 2,277 SF

NAI Farberman

Commercial Real Estate Services, Worldwide.

www.naifarberman.com

Gavin Mills

Leasing and Sales Associate | 908.304.4534
mills@farberman.com

Brandon Ben-Ezra

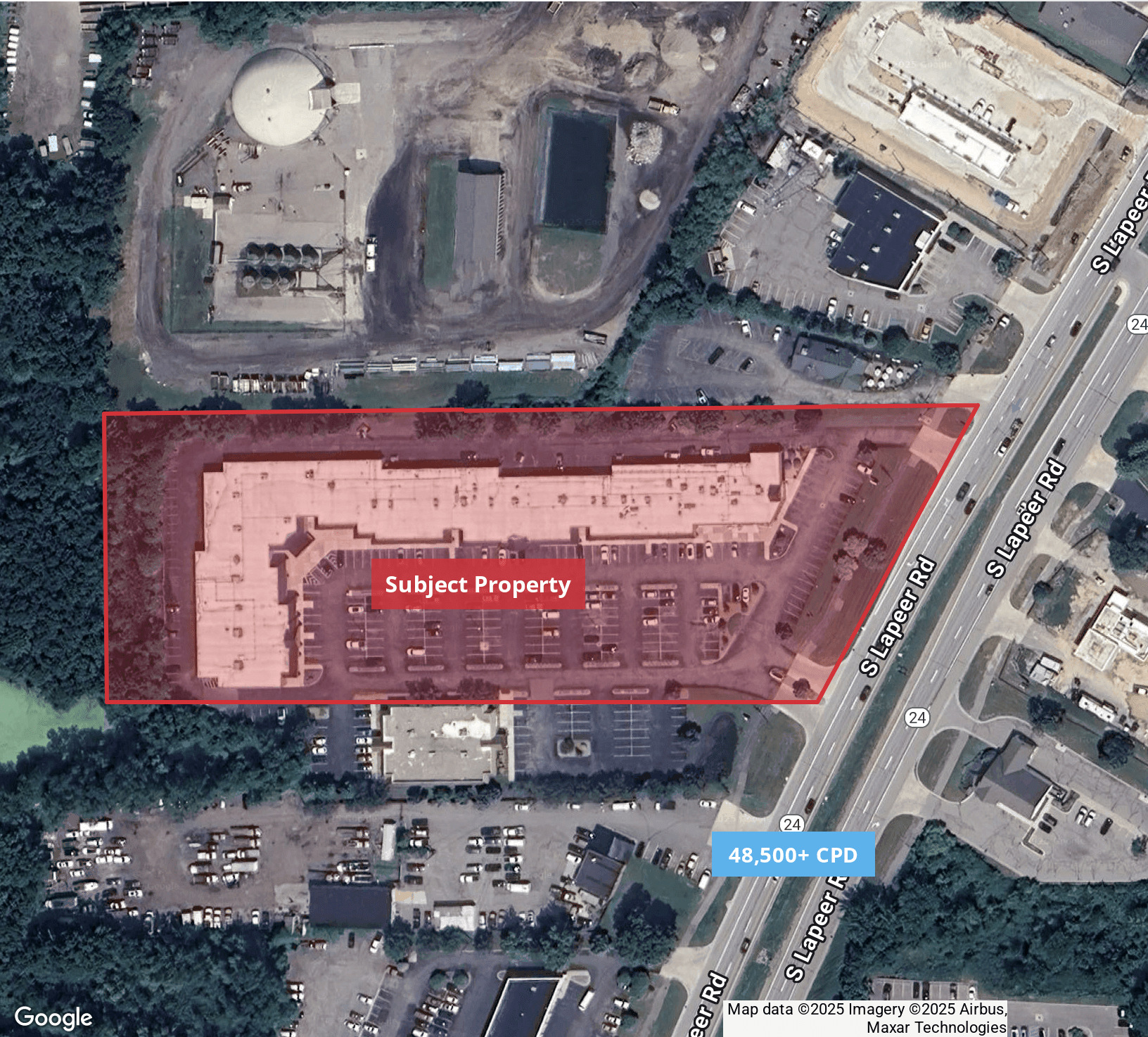
Leasing and Sales Associate | 947.517.6226
ben-ezra@farberman.com

NO WARRANTY, EXPRESS OR IMPLIED, IS MADE AS TO THE ACCURACY OF THE INFORMATION CONTAINED HEREIN. THIS INFORMATION IS SUBMITTED SUBJECT TO ERRORS, OMISSIONS, CHANGE OF PRICE, RENTAL OR OTHER CONDITIONS, WITHDRAWAL WITHOUT NOTICE, AND IS SUBJECT TO ANY SPECIAL LISTING CONDITIONS IMPOSED BY OUR PRINCIPALS, COOPERATING BROKERS, BUYERS, TENANTS AND OTHER PARTIES WHO RECEIVE THIS DOCUMENT SHOULD NOT RELY ON IT, BUT SHOULD USE IT AS A STARTING POINT OF ANALYSIS, AND SHOULD INDEPENDENTLY CONFIRM THE ACCURACY OF THE INFORMATION CONTAINED HEREIN THROUGH A DUE DILIGENCE REVIEW OF THE BOOKS, RECORDS, FILES AND DOCUMENTS THAT CONSTITUTE RELIABLE SOURCES OF THE INFORMATION DESCRIBED HEREIN. LOGOS ARE FOR IDENTIFICATION PURPOSES ONLY AND MAY BE TRADEMARKS OF THEIR RESPECTIVE COMPANIES. NAI Farberman, INC. CA BRE LIC. #01990696.

2,074 - 4,153 SF
RETAIL/OFFICE/MEDICAL



FOR LEASE



Subject Property

48,500+ CPD

Map data ©2025 Imagery ©2025 Airbus,
Maxar Technologies



www.naifarbman.com

Gavin Mills
Leasing and Sales Associate | 908.304.4534
mills@farbman.com

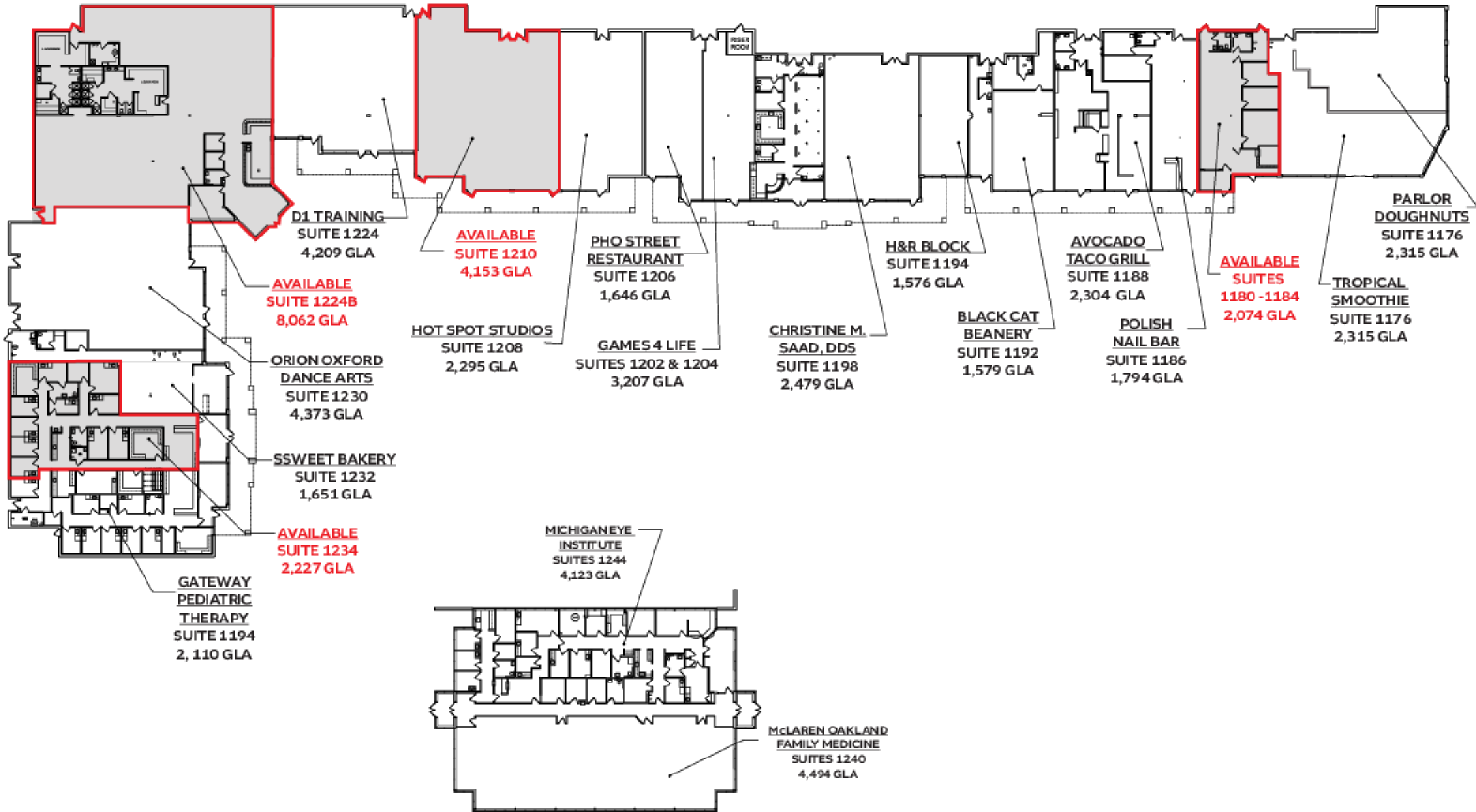
Brandon Ben-Ezra
Leasing and Sales Associate | 947.517.6226
ben-ezra@farbman.com

NO WARRANTY, EXPRESS OR IMPLIED, IS MADE AS TO THE ACCURACY OF THE INFORMATION CONTAINED HEREIN. THIS INFORMATION IS SUBMITTED SUBJECT TO ERRORS, OMISSIONS, CHANGE OF PRICE, RENTAL OR OTHER CONDITIONS, WITHDRAWAL WITHOUT NOTICE, AND IS SUBJECT TO ANY SPECIAL LISTING CONDITIONS IMPOSED BY OUR PRINCIPALS. COOPERATING BROKERS, BUYERS, TENANTS AND OTHER PARTIES WHO RECEIVE THIS DOCUMENT SHOULD NOT RELY ON IT, BUT SHOULD USE IT AS A STARTING POINT OF ANALYSIS, AND SHOULD INDEPENDENTLY CONFIRM THE ACCURACY OF THE INFORMATION CONTAINED HEREIN THROUGH A DUE DILIGENCE REVIEW OF THE BOOKS, RECORDS, FILES AND DOCUMENTS THAT CONSTITUTE RELIABLE SOURCES OF THE INFORMATION DESCRIBED HEREIN. LOGOS ARE FOR IDENTIFICATION PURPOSES ONLY AND MAY BE TRADEMARKS OF THEIR RESPECTIVE COMPANIES. NAI Farbman, INC. CA BRE LIC. #01990696.

2,074 - 4,153 SF RETAIL/OFFICE/MEDICAL



FOR LEASE



ORION MARKETPLACE
1176-1244 S. LAPEER RD, LAKE ORION
MASTER PLAN

6-7-22

NOT TO SCALE

PREPARED BY METRO CAD GROUP



www.naifarman.com

Gavin Mills

Leasing and Sales Associate | 908.304.4534
mills@farman.com

Brandon Ben-Ezra

Leasing and Sales Associate | 947.517.6226
ben-ezra@farman.com

NO WARRANTY, EXPRESS OR IMPLIED, IS MADE AS TO THE ACCURACY OF THE INFORMATION CONTAINED HEREIN. THIS INFORMATION IS SUBMITTED SUBJECT TO ERRORS, OMISSIONS, CHANGE OF PRICE, RENTAL OR OTHER CONDITIONS, WITHDRAWAL WITHOUT NOTICE, AND IS SUBJECT TO ANY SPECIAL LISTING CONDITIONS IMPOSED BY OUR PRINCIPALS, COOPERATING BROKERS, BUYERS, TENANTS AND OTHER PARTIES WHO RECEIVE THIS DOCUMENT SHOULD NOT RELY ON IT, BUT SHOULD USE IT AS A STARTING POINT OF ANALYSIS, AND SHOULD INDEPENDENTLY CONFIRM THE ACCURACY OF THE INFORMATION CONTAINED HEREIN THROUGH A DUE DILIGENCE REVIEW OF THE BOOKS, RECORDS, FILES AND DOCUMENTS THAT CONSTITUTE RELIABLE SOURCES OF THE INFORMATION DESCRIBED HEREIN. LOGOS ARE FOR IDENTIFICATION PURPOSES ONLY AND MAY BE TRADEMARKS OF THEIR RESPECTIVE COMPANIES. NAI Farman, INC. CA BRE LIC. #01990696.

2,074 - 4,153 SF
 RETAIL/OFFICE/MEDICAL



FOR LEASE

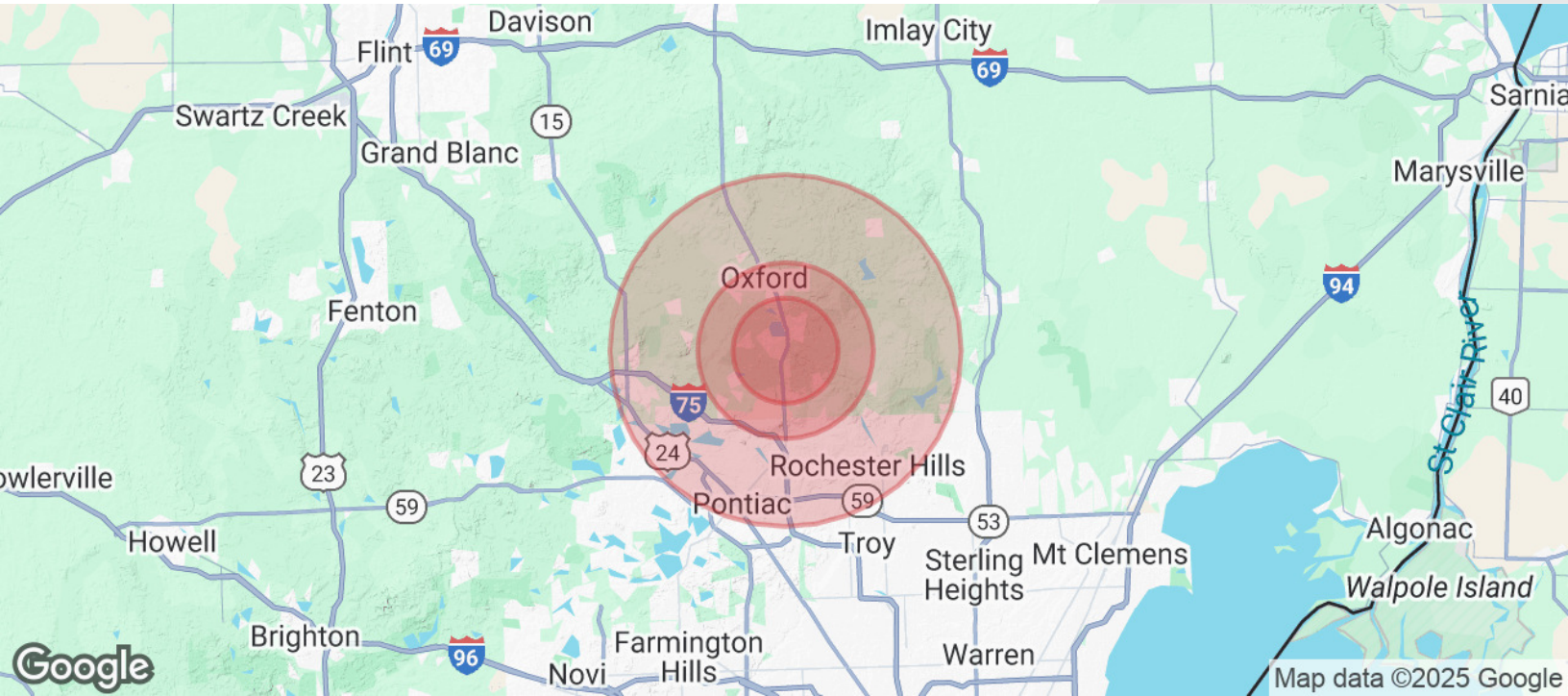


Map data ©2023 Imagery ©2023, Airbus, CNES / Airbus, Landsat / Copernicus, Maxar Technologies, U.S. Geological Survey, USDA/FPAC/GEO

2,074 - 4,153 SF RETAIL/OFFICE/MEDICAL



FOR LEASE



POPULATION	3 MILES	5 MILES	10 MILES
Total Population	29,184	72,730	325,001
Average Age	37.1	37.5	37.1
Average Age (Male)	35.0	36.2	36.1
Average Age (Female)	38.3	38.5	37.9

HOUSEHOLDS & INCOME	3 MILES	5 MILES	10 MILES
Total Households	10,329	23,602	113,142
# of Persons per HH	2.69	2.73	2.56
Average HH Income	\$132,303	\$139,157	\$109,369
Average House Value	\$283,096	\$300,068	\$258,619

* Demographic data derived from 2020 ACS - US Census