

COPANS INDUSTRIAL PARK

1901-1945 WEST COPANS ROAD, POMPANO BEACH, FL 33064

1939 W COPANS ROAD



1939 SPACE HIGHLIGHTS

- 4,467 SF
- End Cap Unit
- 2 air-conditioned offices totaling 835 SF
- 18'3" clear ceiling in warehouse
- 12' x 14' grade level overhead door
- 2 private restrooms
- Close to I-95



NATALIE DELISLE

Property Manager / Sales Associate
561.643.7063
natalie@levyai.com

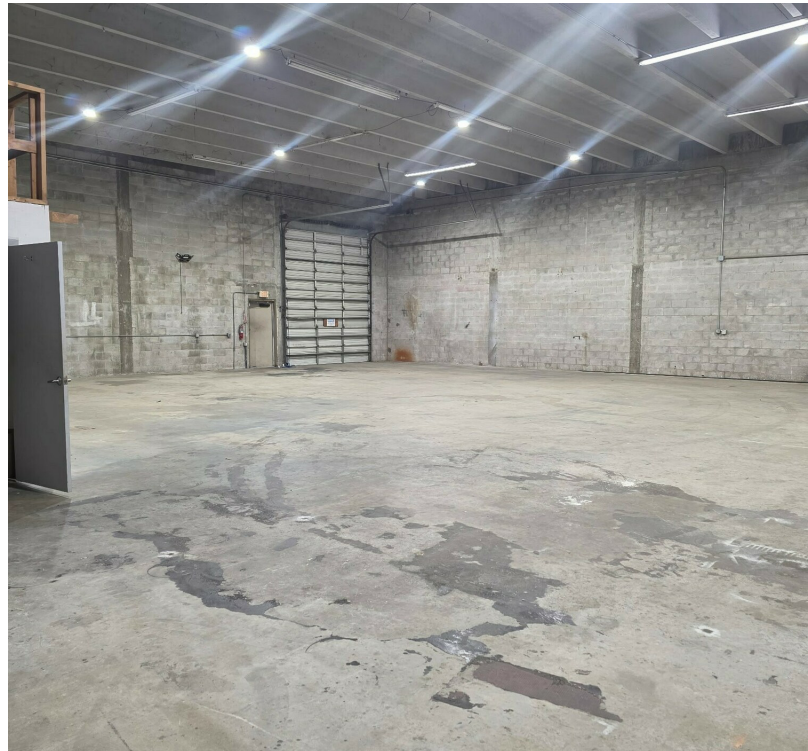


FOR LEASE

COPANS INDUSTRIAL PARK

1901-1945 WEST COPANS ROAD, POMPANO BEACH, FL 33064

1939 W COPANS RD ADDITIONAL PHOTOS



NATALIE DELISLE

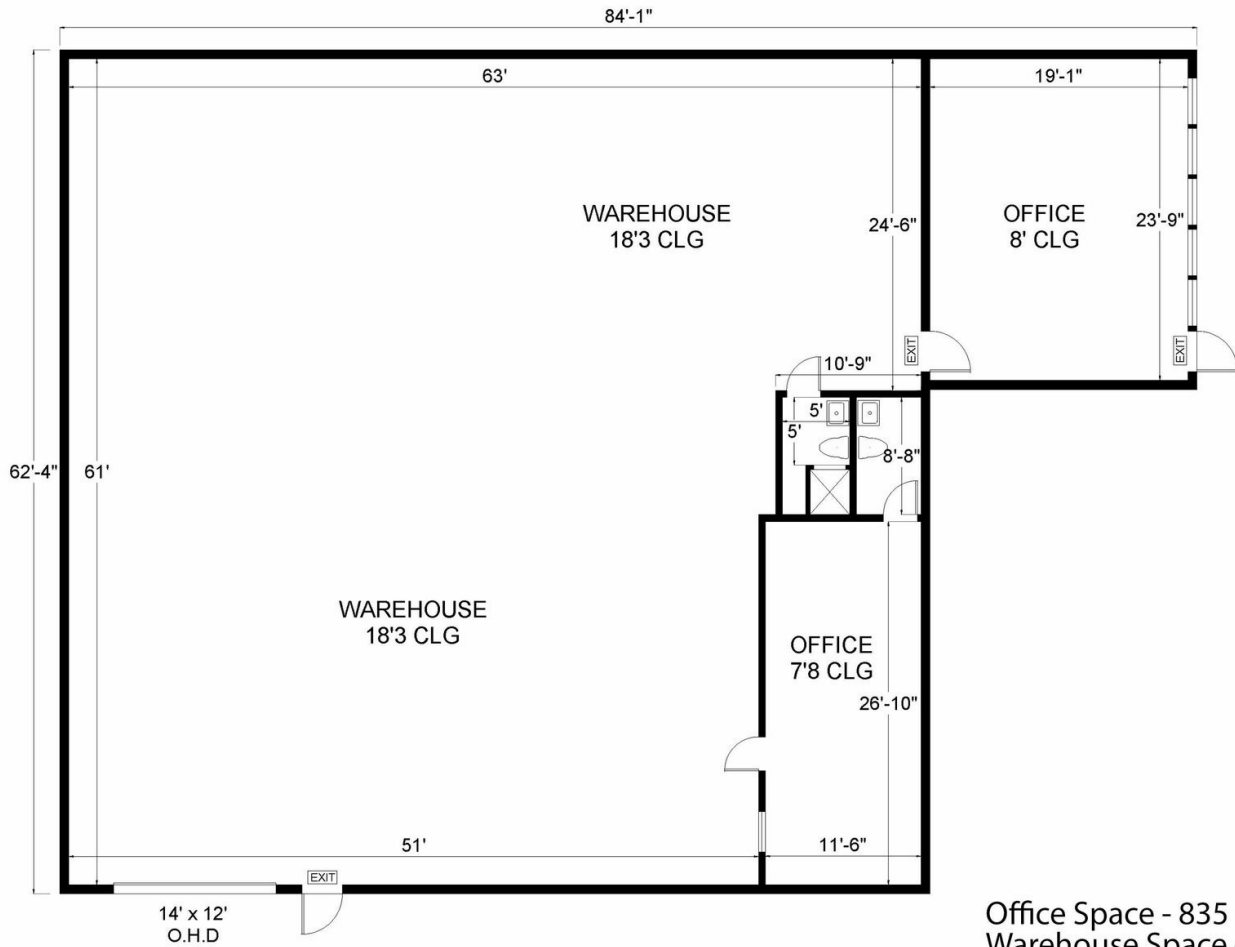
Property Manager / Sales Associate
561.643.7063
natalie@levyrai.com



COPANS INDUSTRIAL PARK

1901-1945 WEST COPANS ROAD, POMPANO BEACH, FL 33064

1939 W Copans Road | Pompano Beach, FL 33064



Office Space - 835 sq.ft.
Warehouse Space - 3,632 sq.ft.

4,467 Total Rentable Sq. Ft.
www.LevyRealtyAdvisors.com

NATALIE DELISLE

Property Manager / Sales Associate
561.643.7063
natalie@levyrai.com

