

BROADWAY SHOPPING CENTER

FOR LEASE

505 W BROADWAY AVE, MINNEAPOLIS, MN 55411



AR Realty Group Inc

PROPERTY OVERVIEW

505 W BROADWAY AVE, MINNEAPOLIS, MN 55411



PROPERTY FEATURES

Property Address	505 W Broadway Ave, Minneapolis, MN 55411
Lease Type	Modified Gross
Asking Rent	\$15 PSF Gross + Utilities
Suite #	Suite # 505
Available SF	11,043 SF
Building SF	61,031 SF
PID	1502924320168
County	Hennepin
Property Type	Retail
Total Floors	1
Tenancy Type	Multi-tenant
Class	B
Sprinklers	Yes
Parking Ratio	2.94/1,000 SF
Parking Spaces	180 Surface Parking Stalls
Clear Height	14'+
Drive Ins	1
Docks	1
Traffic Count:	W Broadway Ave - 18,568 VPD
HWY VPD (Vehicles Per Day)	I-94 - 99,091 VPD
Cross Street VPD	N Lyndale Ave - 7,786 VPD

LISTING DESCRIPTION

Highly visible big-box retail space located on West Broadway in North Minneapolis. Positioned in a busy retail corridor with strong daily traffic, nearby neighborhood amenities, and excellent accessibility. A great opportunity for retail or service users seeking exposure in a dense, established area.

ZONING

CM2 Corridor Mixed-Use District: The Cm2 Corridor Mixed-Use District allows small, moderate, and large-scale commercial uses. Mixed-use multistory development is encouraged.



FOR MORE INFORMATION PLEASE CONTACT

ALEX BROWN ☎ 952-200-0675
✉ Alex@arrgm.com

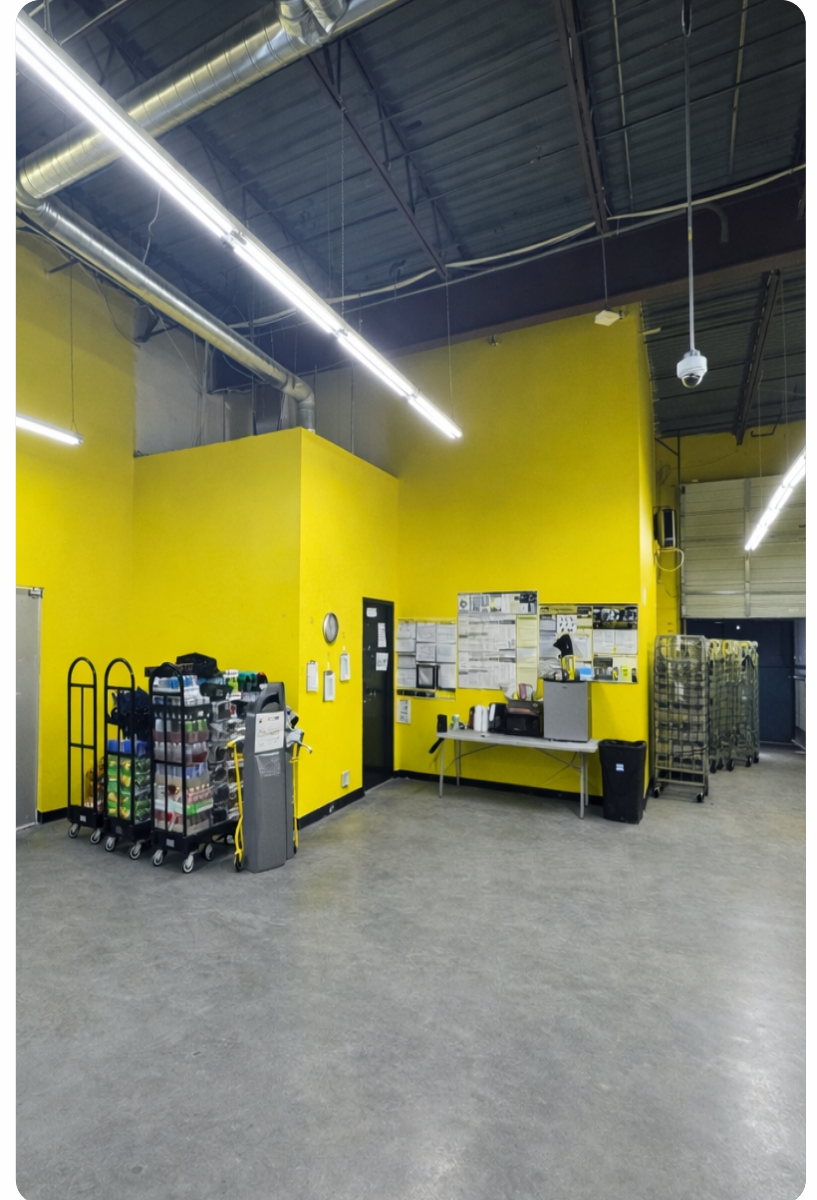
HANNAH LARRABEE ☎ 218-248-0725
✉ Hannah@arrgm.com

INTERIOR PHOTOS

505 W BROADWAY AVE, MINNEAPOLIS, MN 55411



AR Realty Group Inc



FOR MORE INFORMATION PLEASE CONTACT

ALEX BROWN

📞 952-200-0675

✉️ Alex@arrgmn.com

HANNAH LARRABEE

📞 218-248-0725

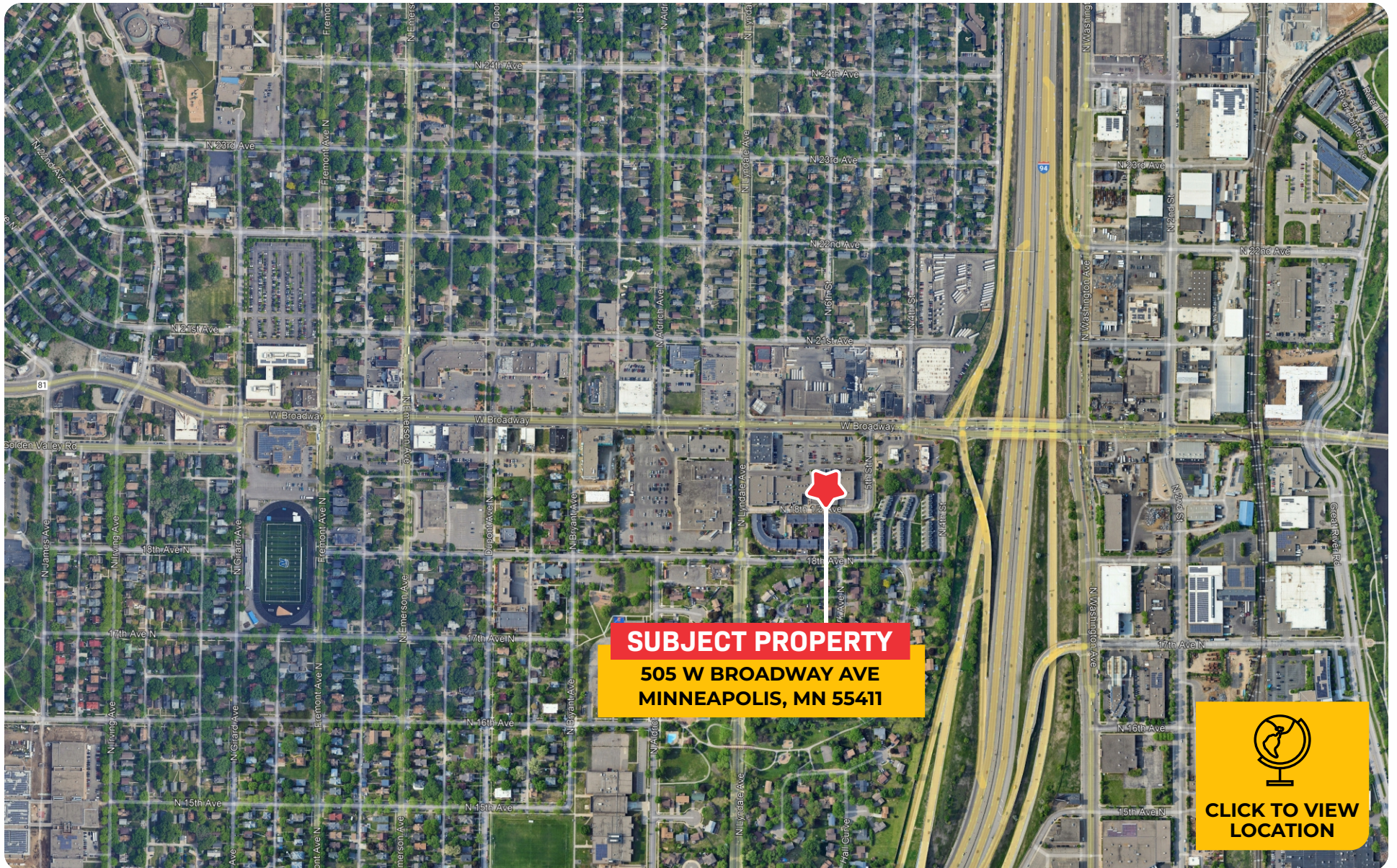
✉️ Hannah@arrgmn.com

AERIAL MAP

505 W BROADWAY AVE, MINNEAPOLIS, MN 55411



AR Realty Group Inc



FOR MORE INFORMATION PLEASE CONTACT

ALEX BROWN ☎ 952-200-0675
✉ Alex@arrgm.com

HANNAH LARRABEE ☎ 218-248-0725
✉ Hannah@arrgm.com

BROADWAY SHOPPING CENTER

FOR LEASE 505 W BROADWAY AVE, MINNEAPOLIS, MN 55411



AR Realty Group Inc

FOR MORE INFORMATION PLEASE CONTACT

ALEX BROWN

☎ 952-200-0675

✉ Alex@arrgm.com

HANNAH LARRABEE

☎ 218-248-0725

✉ Hannah@arrgm.com