




For sublease

Rivulon | 12,578 SF Available

 **JLL** SEE A BRIGHTER WAY

275 E Rivulon Blvd
Gilbert, AZ 85297

Suite 310



12,578 SF (3rd floor)



Negotiable rate



Immediate availability



Sublease expiration: 1/31/2031

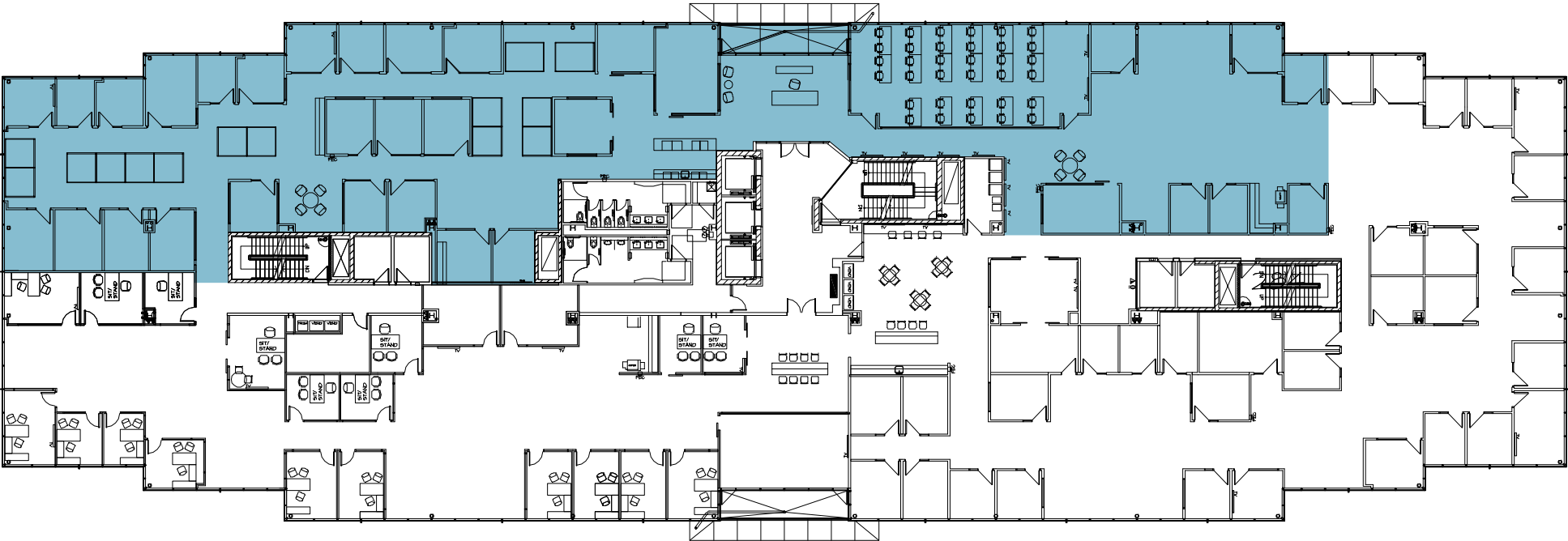


Parking ratio: 5.50/1,000 SF



Suite 310 floorplan

12,578 SF



Thank you

About JLL

JLL (NYSE: JLL) is a leading professional services firm that specializes in real estate and investment management. JLL shapes the future of real estate for a better world by using the most advanced technology to create rewarding opportunities, amazing spaces and sustainable real estate solutions for our clients, our people and our communities. JLL is a Fortune 500 company with annual revenue of \$19.4 billion, operations in over 80 countries and a global workforce of more than 100,000 as of March 31, 2022. JLL is the brand name, and a registered trademark, of Jones Lang LaSalle Incorporated. For further information, visit jll.com.

Trevor Pratt

Managing Director

trevor.pratt@jll.com

+1 602 315 7966