

Neighboring
the redevelopment of
two retail condos and
20 luxury townhomes -
Est. Delivery Q4 2026

GRAVITY
- SALON -

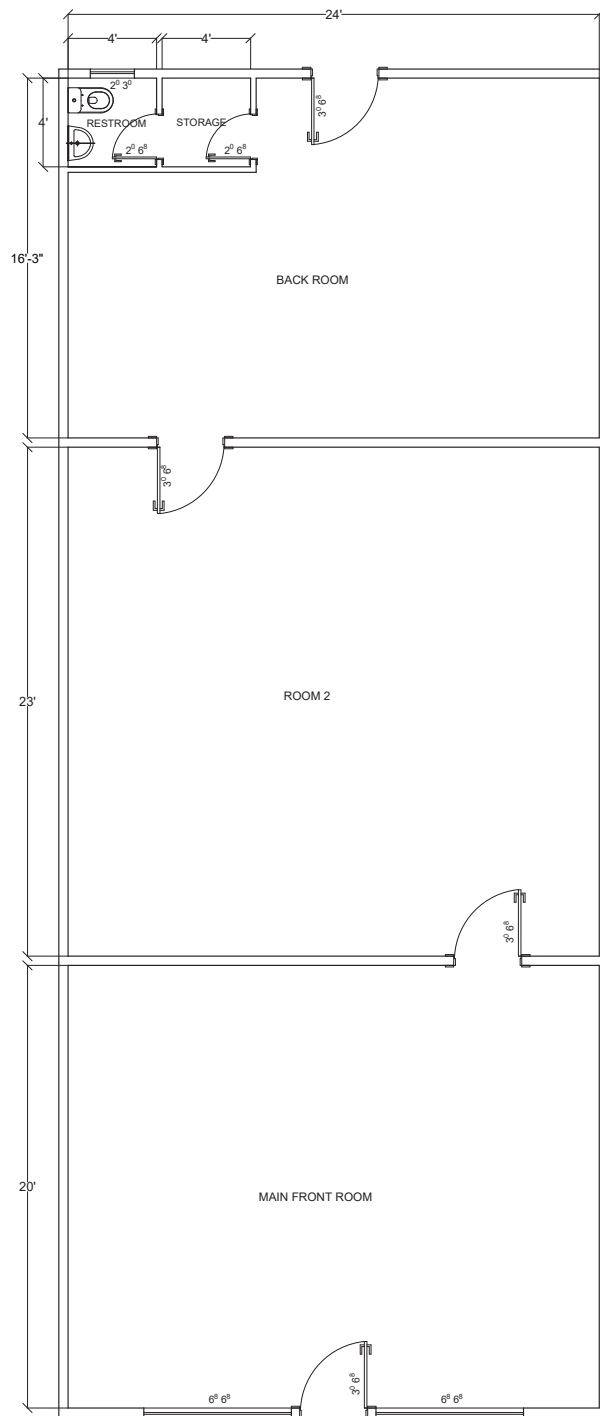
AVAILABLE
1,410 SF

RUSTIC
BAKERY

Magnolia Village

Larkspur, CA





- 1,410 SF
- Former Jewelry Store

Kentfield



MAGNOLIA VILLAGE
 RUSTIC BAKERY
GRAVITY
 - SALON -

BON AIR GREENBRAE
 WOODLANDS Pet Food & Treats
 MOLLIE STONE'S MARKETS
 GOTT'S ROADSIDE
 CVS pharmacy

MARIN COUNTRY MART
 HOG ISLAND OYSTER CO.
 RUSTIC BAKERY
 The RealReal
 BIRKENSTOCK

THE MARKETPLACE
 Book Passage
 NOTHING BUT THE CAKES
 ARCHRIVAL SPORTS

GOST PLUS PLAZA
 BevMo!
 COST PLUS WORLD MARKET
 TRADER JOE'S
 theVitamin Shoppe

TOWN CENTER CORTE MADERA
 The Container Store
 REI
 RITE AID
 SEPHORA
 Crate&Barrel

THE VILLAGE AT CORTE MADERA
 NORDSTROM
 macy's
 Apple Store
 POTTERY BARN
 lululemon
 BOUDIN
 athletica
 VUORI

ALTO CENTER
 WHOLE FOODS MARKET
 RITE AID
 CVS pharmacy
 pet food express

STRAWBERRY VILLAGE
 SEPHORA
 west elm
 Starbucks
 ARCHRIVAL SPORTS
 IN-N-OUT BURGER
 WOODLANDS Pet Food & Treats
 STRETCH LAB



Larkspur, CA

With its central location, Larkspur is great for those who want a little bit of everything. Vibrant shops, weekly events and some of Marin's most prized restaurants, the community is energetic when you want it to be and peaceful when you don't.

Downtown Larkspur, known as Magnolia Avenue amongst locals, is lined with luxury boutiques, award-winning restaurants and local hot spots.



\$182,963



13,305



91.5%



This information has been secured from sources we believe to be reliable, but we make no representations, or warranties, express or implied, as to the accuracy of the information. Listing broker has been given enough information to provide only preliminary due diligence on the property. The materials are not to be considered fact. The information contained herein is not a substitute for a thorough due diligence investigation. Information to be verified by an interested party, and their advisors and consultants. By receiving these materials you are agreeing to the disclaimers set forth herein.

DRE# 01445169 | Retail West © 2025

retailwest